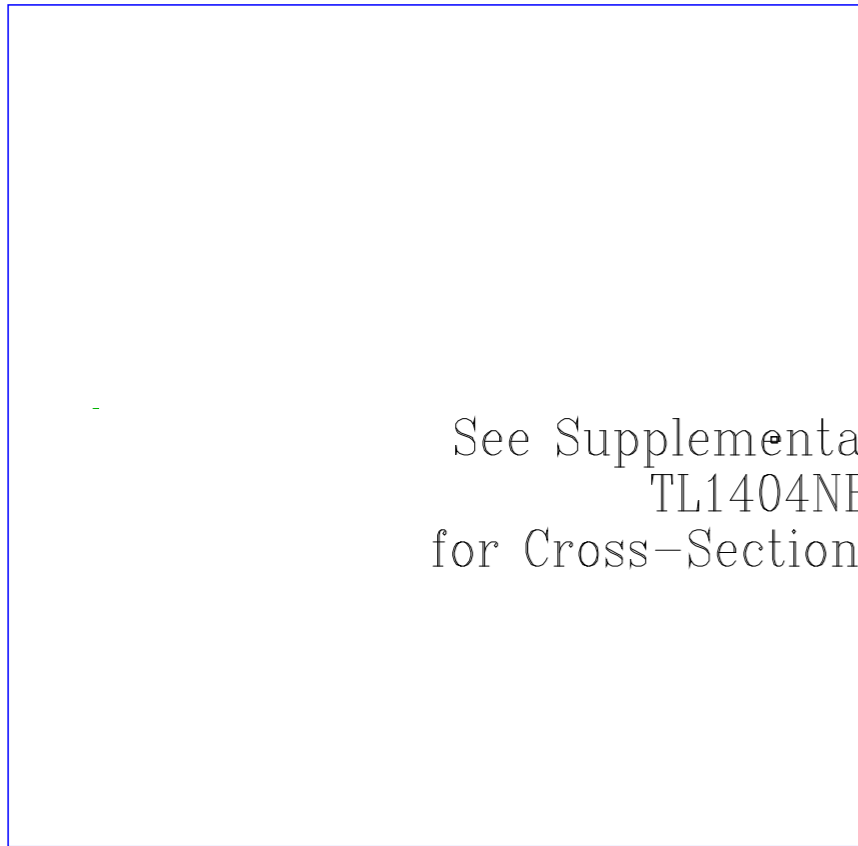
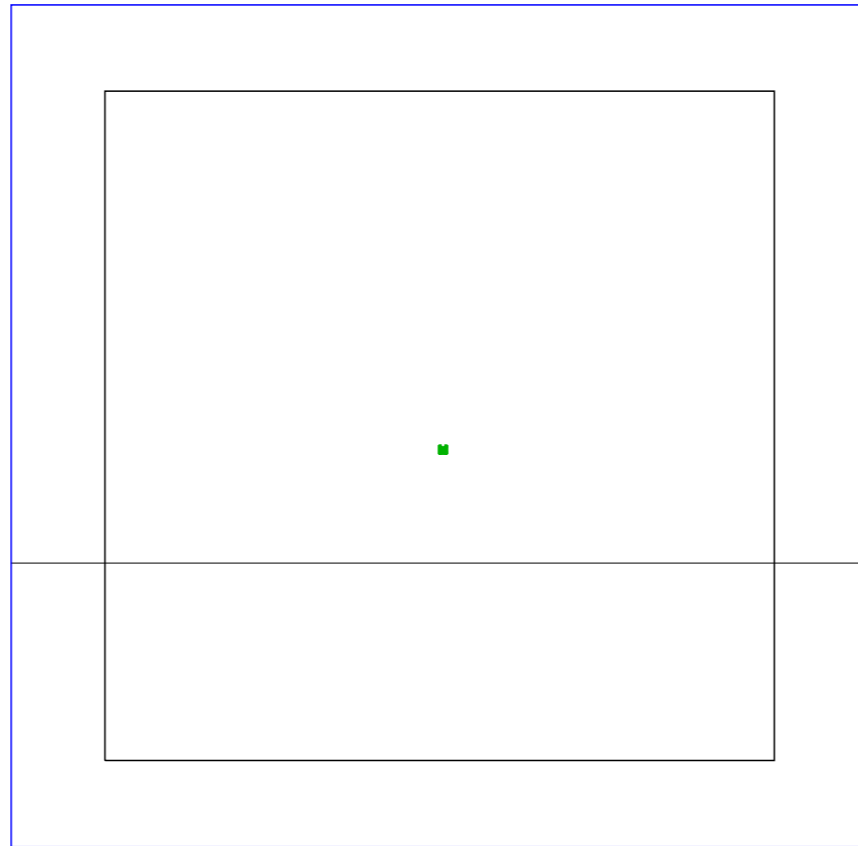


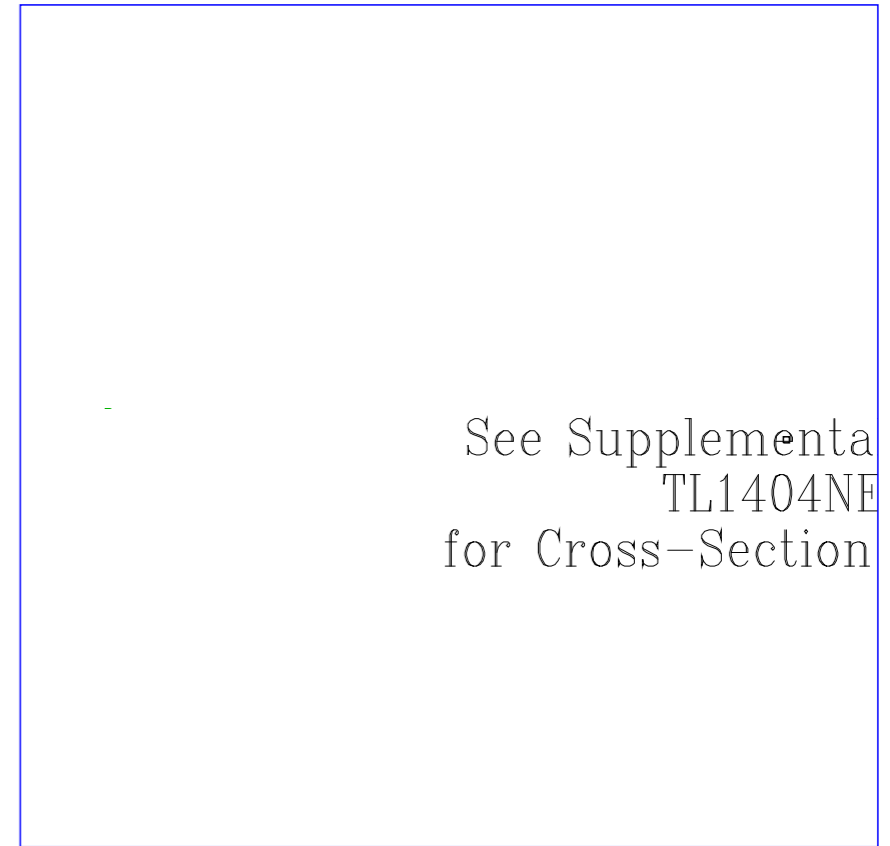
Cross Section (45)



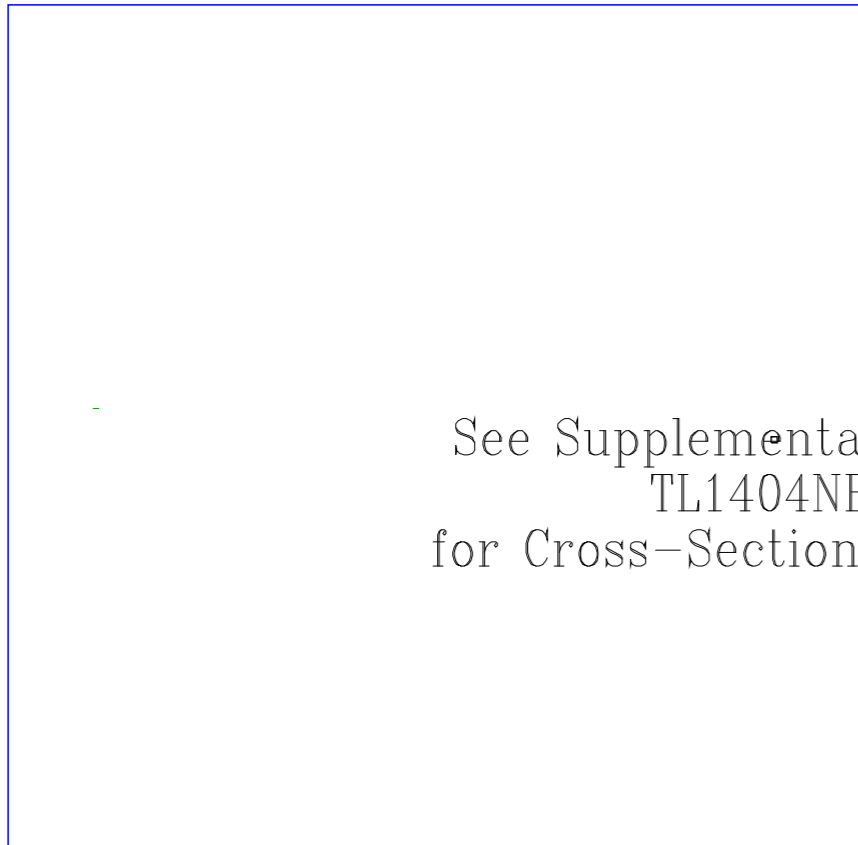
Cross Section (11.)



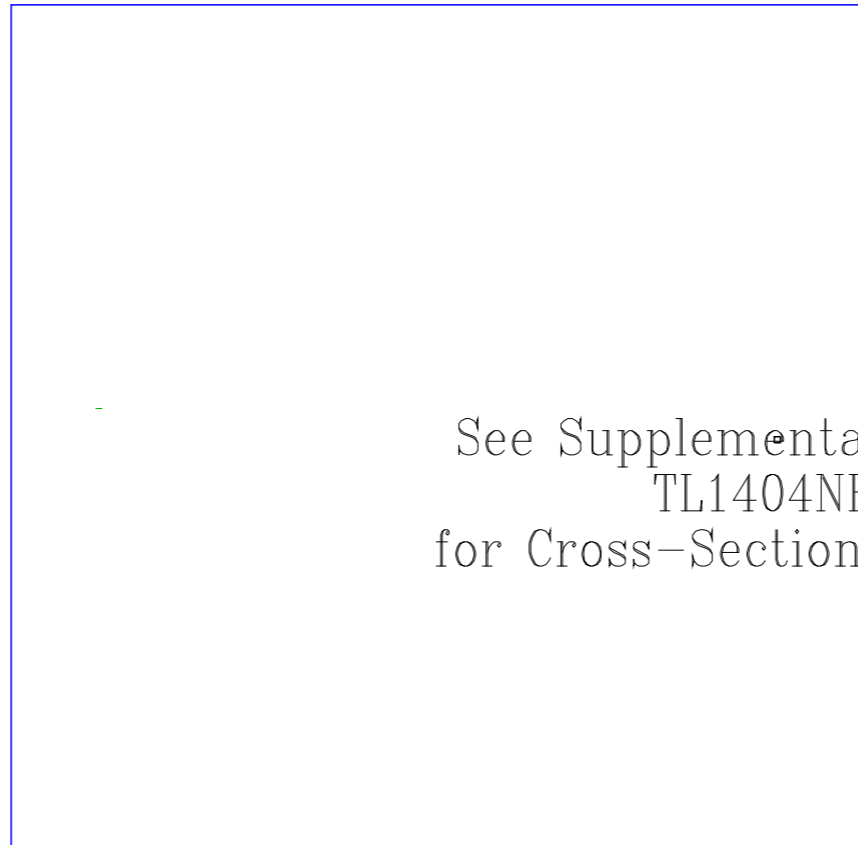
Cross Section (48)



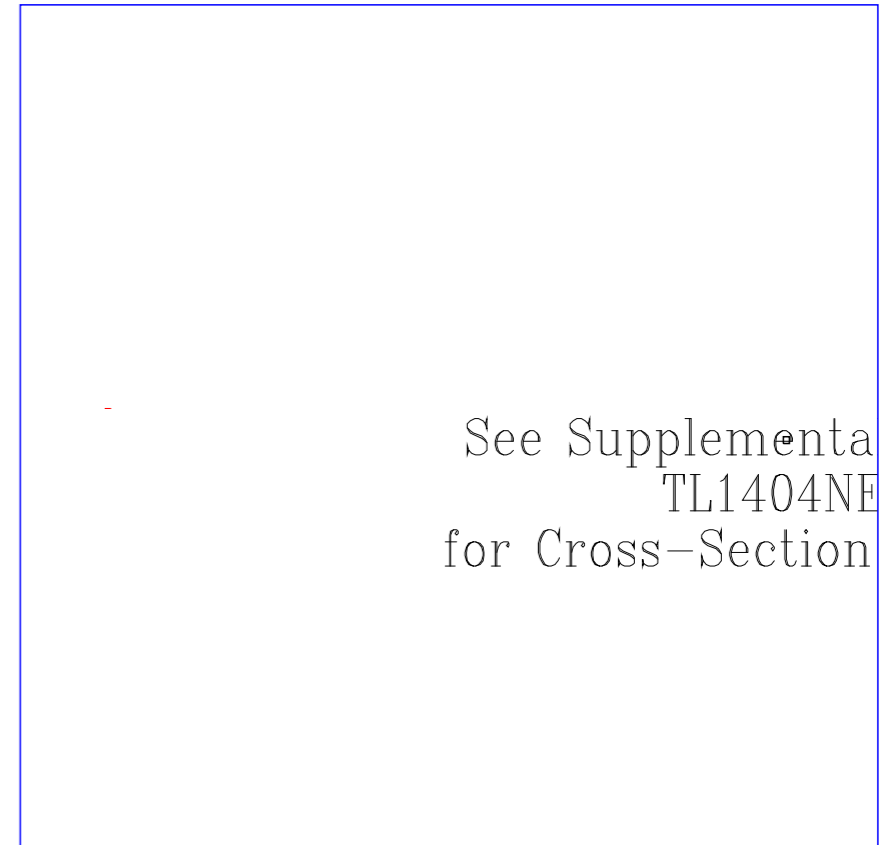
Cross Section (46)



Cross Section (43)



Cross Section (41)



Cross Section (47)

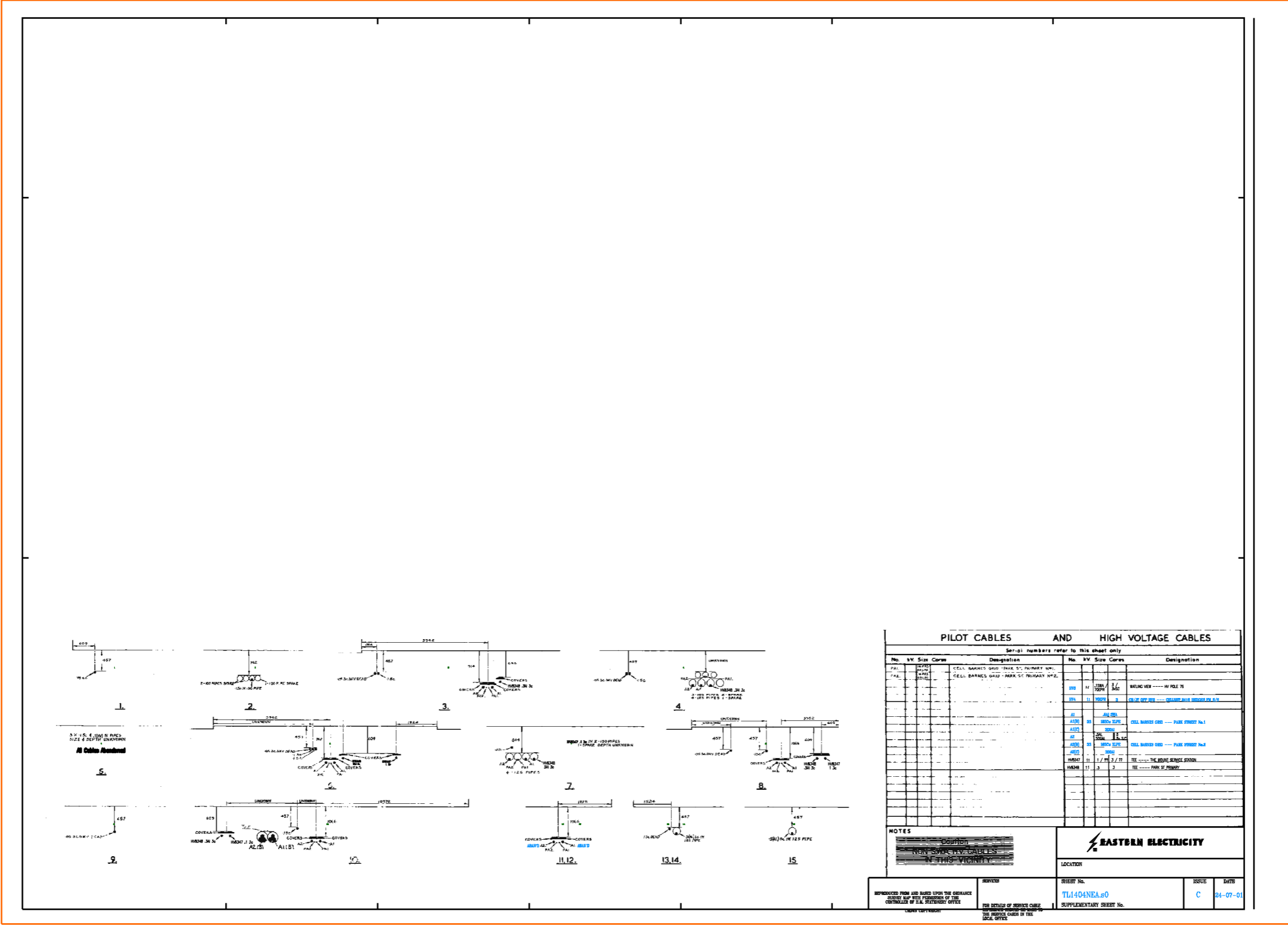
See Supplementa
TL1404NE
for Cross-Section

Cross Section (44)

See Supplementa
TL1404NE
for Cross-Section

SO

TL1404NEA 1:500 LV



| PILOT CABLES AND HIGH VOLTAGE CABLES | | | |
|-----------------------------------------|----|------|------|
| Serial numbers refer to this sheet only | | | |
| No. | SV | Size | Core |
| 1 | 11 | 1/2" | 1/2" |
| 2 | 11 | 1/2" | 1/2" |
| 3 | 11 | 1/2" | 1/2" |
| 4 | 11 | 1/2" | 1/2" |
| 5 | 11 | 1/2" | 1/2" |
| 6 | 11 | 1/2" | 1/2" |
| 7 | 11 | 1/2" | 1/2" |
| 8 | 11 | 1/2" | 1/2" |
| 9 | 11 | 1/2" | 1/2" |
| 10 | 11 | 1/2" | 1/2" |
| 11 | 11 | 1/2" | 1/2" |
| 12 | 11 | 1/2" | 1/2" |
| 13 | 11 | 1/2" | 1/2" |
| 14 | 11 | 1/2" | 1/2" |
| 15 | 11 | 1/2" | 1/2" |

| No. | SV | Size | Core | Designation |
|-----|----|------|------|------------------------------------------|
| 1 | 11 | 1/2" | 1/2" | CELL BANKED CABLE - TRAIL TO PRIMARY WPT |
| 2 | 11 | 1/2" | 1/2" | CELL BANKED CABLE - TRAIL TO PRIMARY WPT |
| 3 | 11 | 1/2" | 1/2" | CELL BANKED CABLE - TRAIL TO PRIMARY WPT |
| 4 | 11 | 1/2" | 1/2" | CELL BANKED CABLE - TRAIL TO PRIMARY WPT |
| 5 | 11 | 1/2" | 1/2" | CELL BANKED CABLE - TRAIL TO PRIMARY WPT |
| 6 | 11 | 1/2" | 1/2" | CELL BANKED CABLE - TRAIL TO PRIMARY WPT |
| 7 | 11 | 1/2" | 1/2" | CELL BANKED CABLE - TRAIL TO PRIMARY WPT |
| 8 | 11 | 1/2" | 1/2" | CELL BANKED CABLE - TRAIL TO PRIMARY WPT |
| 9 | 11 | 1/2" | 1/2" | CELL BANKED CABLE - TRAIL TO PRIMARY WPT |
| 10 | 11 | 1/2" | 1/2" | CELL BANKED CABLE - TRAIL TO PRIMARY WPT |
| 11 | 11 | 1/2" | 1/2" | CELL BANKED CABLE - TRAIL TO PRIMARY WPT |
| 12 | 11 | 1/2" | 1/2" | CELL BANKED CABLE - TRAIL TO PRIMARY WPT |
| 13 | 11 | 1/2" | 1/2" | CELL BANKED CABLE - TRAIL TO PRIMARY WPT |
| 14 | 11 | 1/2" | 1/2" | CELL BANKED CABLE - TRAIL TO PRIMARY WPT |
| 15 | 11 | 1/2" | 1/2" | CELL BANKED CABLE - TRAIL TO PRIMARY WPT |

NOTES

1. ALL CABLES TO BE INSTALLED IN ACCORDANCE WITH THE REQUIREMENTS OF THE BRITISH STANDARD BS 6843 PART 1.

2. ALL CABLES TO BE INSTALLED IN ACCORDANCE WITH THE REQUIREMENTS OF THE BRITISH STANDARD BS 6843 PART 2.

3. ALL CABLES TO BE INSTALLED IN ACCORDANCE WITH THE REQUIREMENTS OF THE BRITISH STANDARD BS 6843 PART 3.

4. ALL CABLES TO BE INSTALLED IN ACCORDANCE WITH THE REQUIREMENTS OF THE BRITISH STANDARD BS 6843 PART 4.

5. ALL CABLES TO BE INSTALLED IN ACCORDANCE WITH THE REQUIREMENTS OF THE BRITISH STANDARD BS 6843 PART 5.

6. ALL CABLES TO BE INSTALLED IN ACCORDANCE WITH THE REQUIREMENTS OF THE BRITISH STANDARD BS 6843 PART 6.

7. ALL CABLES TO BE INSTALLED IN ACCORDANCE WITH THE REQUIREMENTS OF THE BRITISH STANDARD BS 6843 PART 7.

8. ALL CABLES TO BE INSTALLED IN ACCORDANCE WITH THE REQUIREMENTS OF THE BRITISH STANDARD BS 6843 PART 8.

9. ALL CABLES TO BE INSTALLED IN ACCORDANCE WITH THE REQUIREMENTS OF THE BRITISH STANDARD BS 6843 PART 9.

10. ALL CABLES TO BE INSTALLED IN ACCORDANCE WITH THE REQUIREMENTS OF THE BRITISH STANDARD BS 6843 PART 10.

11. ALL CABLES TO BE INSTALLED IN ACCORDANCE WITH THE REQUIREMENTS OF THE BRITISH STANDARD BS 6843 PART 11.

12. ALL CABLES TO BE INSTALLED IN ACCORDANCE WITH THE REQUIREMENTS OF THE BRITISH STANDARD BS 6843 PART 12.

13. ALL CABLES TO BE INSTALLED IN ACCORDANCE WITH THE REQUIREMENTS OF THE BRITISH STANDARD BS 6843 PART 13.

14. ALL CABLES TO BE INSTALLED IN ACCORDANCE WITH THE REQUIREMENTS OF THE BRITISH STANDARD BS 6843 PART 14.

15. ALL CABLES TO BE INSTALLED IN ACCORDANCE WITH THE REQUIREMENTS OF THE BRITISH STANDARD BS 6843 PART 15.

EASTERN ELECTRICITY

LOCATION

ISSUES

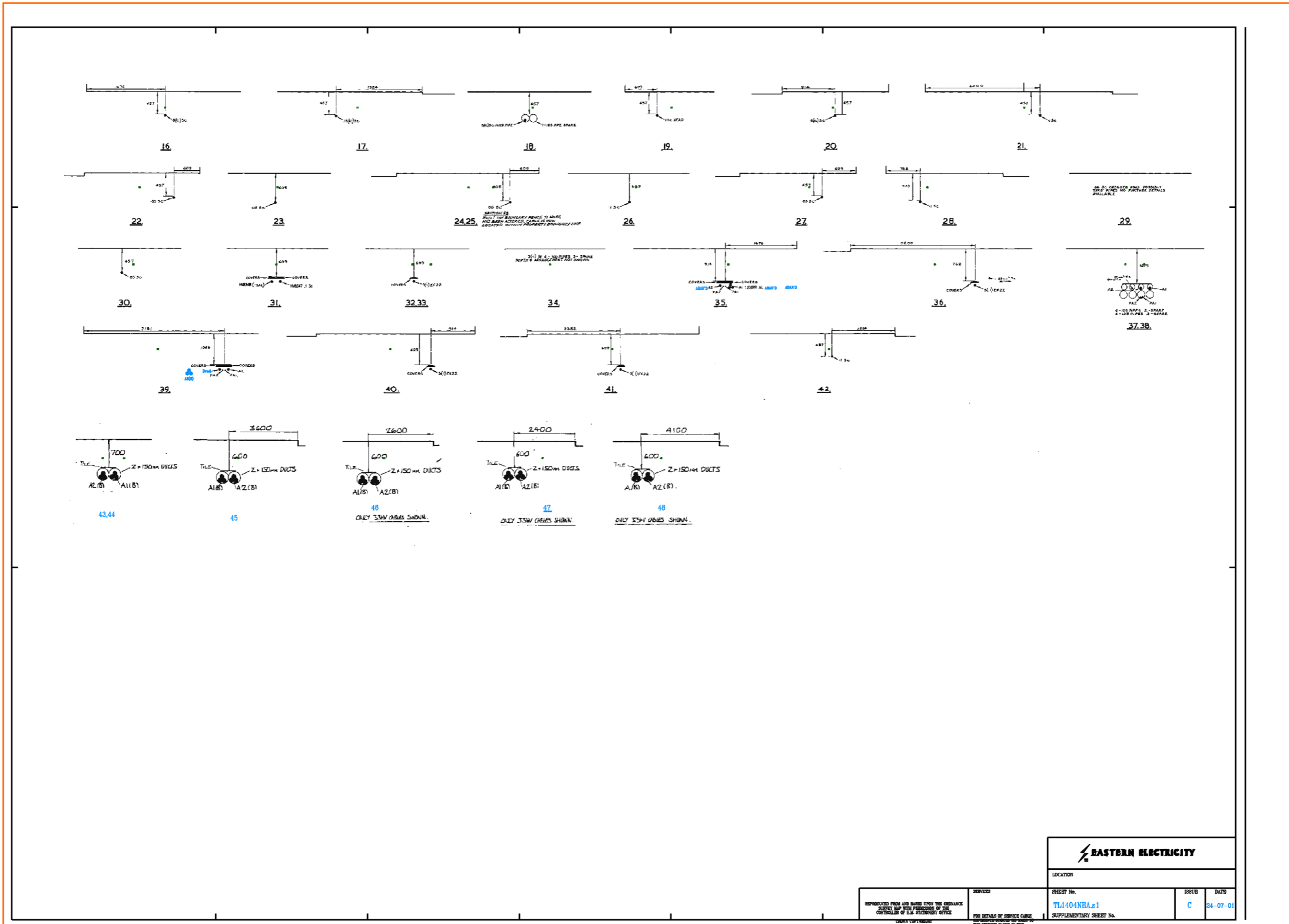
DATE

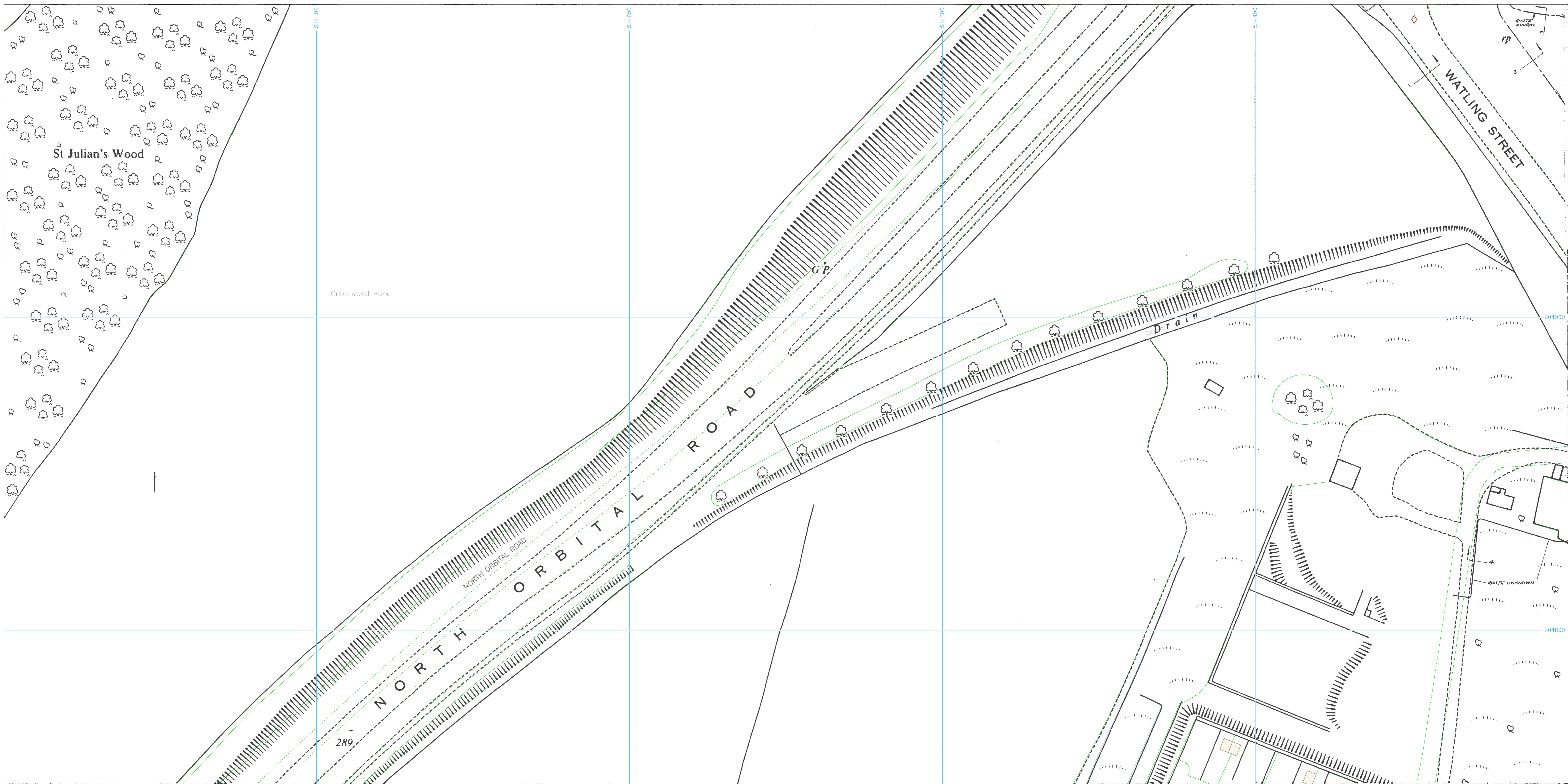
C 24-07-01

TL1404NEA.s0

SUPPLEMENTARY SHEET No.







Plotted On : 07/03/2017

Plotted By : Kav Singh

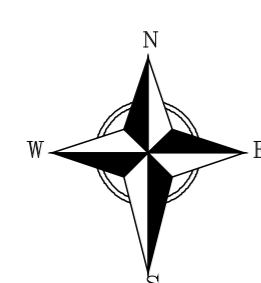
Plot Description: Site off Watling Street, St Albans, AL2 2PA

2017/2248382/ug_mains

Map Centre : TL1404NW



UK Power Networks
Plan Provision
Fore Hamlet
IPSWICH
Suffolk
IP3 8AA
Tel 0800 0565 866
Fax 08701 963782



For details of the symbology please refer to <http://www.ukpowernetworks.co.uk/safety-emergencies/in-the-workplace/understanding-safety-symbols.shtml>

PRIMARY CABLES
EXTRA HIGH VOLTAGE CABLES (EHV) 22,000 TO 132,000 Volts

Depth normally 750mm cover in carriageway & 600mm cover in footway.
Before digging within one metre of these cable routes
Telephone 0800 056 5866 in order that the Company's apparatus may be located on site and any necessary protection works agreed.

N.B. THRUST BORERS OR MOLES MUST NOT BE USED WITHIN THE VICINITY OF ANY CABLES BELONGING TO UK POWER NETWORKS WITHOUT FIRST CONTACTING THIS COMPANY.

1. The position of the apparatus shown on this drawing is believed to be correct but the original landmarks may have been altered since the apparatus was installed.
2. The exact position of the apparatus should be verified – use approved cable avoidance tools prior to excavation using suitable hand tools.
3. It is essential that trial holes are carefully made avoiding the use of mechanical tools or picks until the exact location of all cables have been determined.
4. It must be assumed that there is a service cable into each property, lamp column and street sign, etc.
5. All cables must be treated as being live unless proved otherwise by UK Power Networks.
6. The information provided must be given to all people working near UK Power Networks' plant & equipment. Do not use plans more than 3 months after the issue date for excavation purposes.
7. Please be aware that electric cables/lines belonging to other owners of licensed electricity distribution systems may be present and it is your responsibility to identify their location.

1. UK Power Networks Ltd does not warrant that the information provided to you is correct. You rely upon it at your own risk.
2. UK Power Networks Ltd does not exclude or limit its liability if it causes the death of a person or causes personal injury to a person where such death or personal injury is caused by its negligence.
3. Subject to paragraph 2, UK Power Networks Ltd has no liability to you in contract, in tort (including negligence), for breach of statutory duty or otherwise howsoever for any loss, damage, costs, claims, demands or expenses that you or any third party may suffer or incur as a result of using the information provided whether for physical damage to property or for any economic loss (including without limitation loss of profit, loss of opportunity, loss of savings, loss of goodwill, loss of business, loss of use) or any special or consequential loss or damage whatsoever.

Reproduced by permission of Ordnance Survey on behalf of HMSO. (c) Crown copyright and database right 2017. All rights reserved. Ordnance Survey Licence number 100019626. Data has been added to the Ordnance Survey base map; all proprietary rights in such additional data are and shall remain the exclusive property of (c) Eastern Power Networks plc or London Power Networks plc each being a distribution licensee under section 6(1)(c) of the Electricity Act 1989 for the relevant distribution services area as that term is defined in such licensee's distribution licence. All rights in such data reserved.

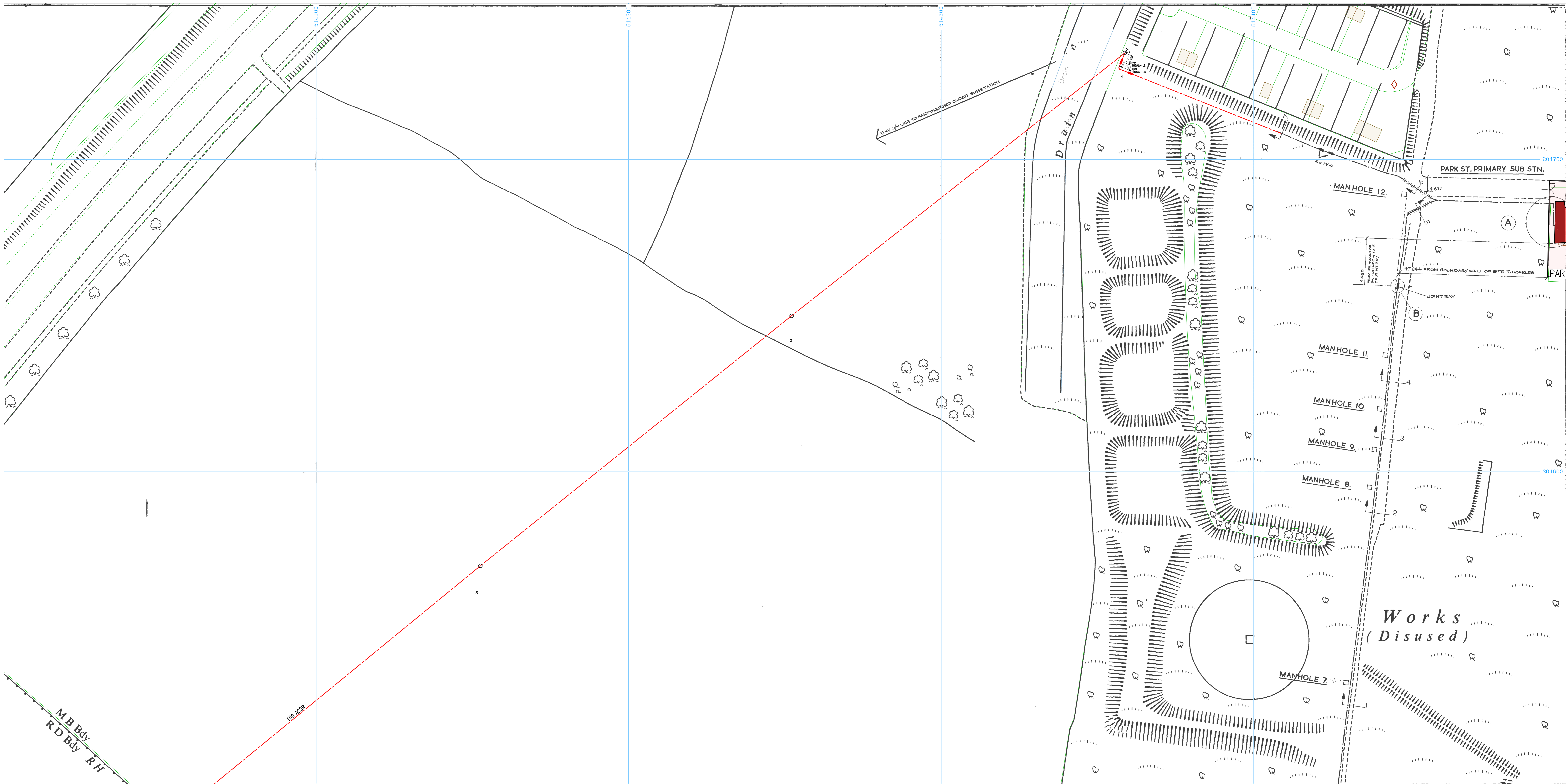
ADVICE TO CONTRACTORS ON AVOIDING DANGER FROM BURIED ELECTRICITY CABLES.

- 1) Do have cable drawings with you on site and check them before you start the excavation.
- 2) Do have a cable locator tool on site and use it to help you.
- 3) Mark out the location of electricity cables.
- 4) Do not use a mechanical excavator within 0.5m of electricity cables.
- 5) Use spades and shovels in preference to other tools.
- 6) Never disturb electricity cables and joints or their protective covers.

IF IN DOUBT – ASK! PHONE 0800 056 5866
EMERGENCY – If you damage a cable or line
Phone 0800 780 0780 (24hrs) URGENTLY

These basic safety precautions are explained in detail in the HSE booklet, HS(G)47 – Avoiding Danger from Underground Services, a copy of which may be obtained from your supervisor or HMSO.

Please be aware that electric lines belonging to other owners of licensed electricity distribution systems may be present and it is your responsibility to identify their location.



Plotted On : 07/03/2017

Plotted By : Kav Singh

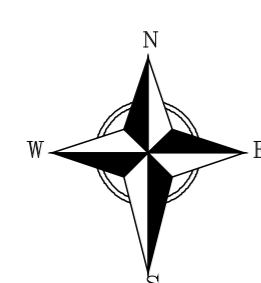
Plot Description: Site off Watling Street, St Albans, AL2 2PA

2017/2248382/ug_mains

Map Centre : TL1404NW



UK Power Networks
Plan Provision
Fore Hamlet
IPSWICH
Suffolk
IP3 8AA
Tel 0800 0565 866
Fax 08701 963782



For details of the symbology please refer to
<http://www.ukpowernetworks.co.uk/safety-emergencies/in-the-workplace/understanding-safety-symbols.shtml>

PRIMARY CABLES
EXTRA HIGH VOLTAGE CABLES (EHV) 22,000 TO 132,000 Volts

Depth normally 750mm cover in carriageway & 600mm cover in footway.
Before digging within one metre of these cable routes
Telephone 0800 056 5866 in order that the Company's apparatus may be located
on site and any necessary protection works agreed.

**N.B. THRUST BORERS OR MOLES MUST NOT BE USED WITHIN THE VICINITY OF ANY
CABLES BELONGING TO UK POWER NETWORKS WITHOUT FIRST CONTACTING THIS
COMPANY.**

1. The position of the apparatus shown on this drawing is believed to be correct but the original landmarks may have been altered since the apparatus was installed.
2. The exact position of the apparatus should be verified – use approved cable avoidance tools prior to excavation using suitable hand tools.
3. It is essential that trial holes are carefully made avoiding the use of mechanical tools or picks until the exact location of all cables have been determined.
4. It must be assumed that there is a service cable into each property, lamp column and street sign, etc.
5. All cables must be treated as being live unless proved otherwise by UK Power Networks.
6. The information provided must be given to all people working near UK Power Networks' plant & equipment. Do not use plans more than 3 months after the issue date for excavation purposes.
7. Please be aware that electric cables/lines belonging to other owners of licensed electricity distribution systems may be present and it is your responsibility to identify their location.

1. UK Power Networks Ltd does not warrant that the information provided to you is correct. You rely upon it at your own risk.
2. UK Power Networks Ltd does not exclude or limit its liability if it causes the death of a person or causes personal injury to a person where such death or personal injury is caused by its negligence.
3. Subject to paragraph 2, UK Power Networks Ltd has no liability to you in contract, in tort (including negligence), for breach of statutory duty or otherwise howsoever for any loss, damage, costs, claims, demands or expenses that you or any third party may suffer or incur as a result of using the information provided whether for physical damage to property or for any economic loss (including without limitation loss of profit, loss of opportunity, loss of savings, loss of goodwill, loss of business, loss of use) or any special or consequential loss or damage whatsoever.

Reproduced by permission of Ordnance Survey on behalf of HMSO. (c) Crown copyright and database right 2017. All rights reserved. Ordnance Survey Licence number 100019626. Data has been added to the Ordnance Survey base map; all proprietary rights in such additional data are and shall remain the exclusive property of (c) Eastern Power Networks plc or London Power Networks plc each being a distribution licensee under section 6(1)(c) of the Electricity Act 1989 for the relevant distribution services area as that term is defined in such licensee's distribution licence. All rights in such data reserved.

**ADVICE TO CONTRACTORS ON AVOIDING DANGER
FROM BURIED ELECTRICITY CABLES.**

- 1) Do have cable drawings with you on site and check them before you start the excavation.
- 2) Do have a cable locator tool on site and use it to help you.
- 3) Mark out the location of electricity cables.
- 4) Do not use a mechanical excavator within 0.5m of electricity cables.
- 5) Use spades and shovels in preference to other tools.
- 6) Never disturb electricity cables and joints or their protective covers.

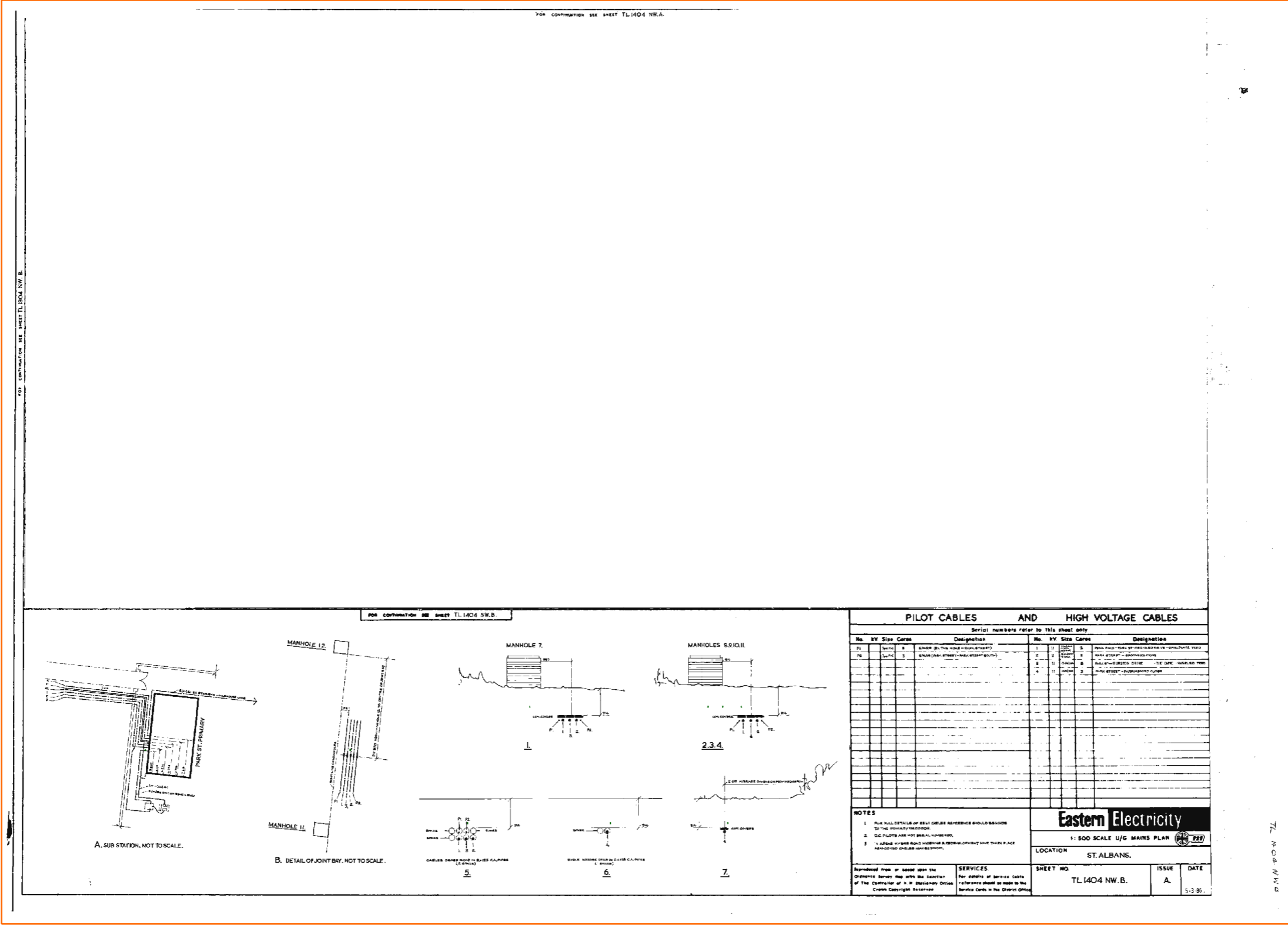
IF IN DOUBT – ASK! PHONE 0800 056 5866
EMERGENCY – If you damage a cable or line
Phone 0800 780 0780 (24hrs) URGENTLY

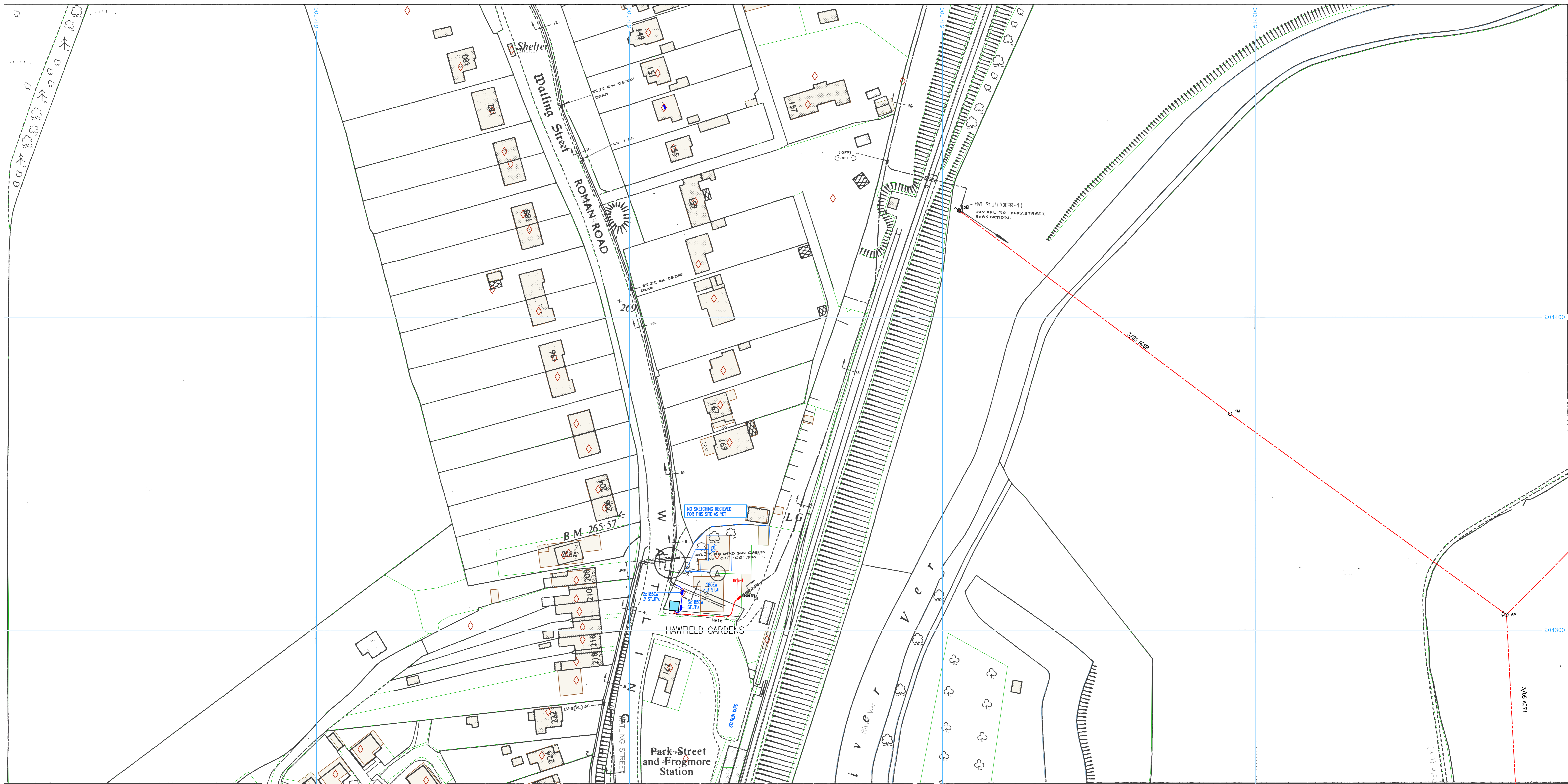
These basic safety precautions are explained in detail in the HSE booklet, HS(G)47 – Avoiding Danger from Underground Services, a copy of which may be obtained from your supervisor or HMSO.

Please be aware that electric lines belonging to other owners of licensed electricity distribution systems may be present and it is your responsibility to identify their location.

SO

TL1404NWB 1:500 LV





Plotted On : 07/03/2017

Plotted By : Kav Singh

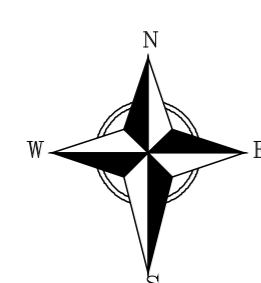
Plot Description: Site off Watling Street, St Albans, AL2 2PA

2017/2248382/ug_mains

Map Centre : TL1404SE



UK Power Networks
Plan Provision
Fore Hamlet
IPSWICH
Suffolk
IP3 8AA
Tel 0800 0565 866
Fax 08701 963782



For details of the symbology please refer to
<http://www.ukpowernetworks.co.uk/safety-emergencies/in-the-workplace/understanding-safety-symbols.shtml>

PRIMARY CABLES
EXTRA HIGH VOLTAGE CABLES (EHV) 22,000 TO 132,000 Volts

Depth normally 750mm cover in carriageway & 600mm cover in footway.
Before digging within one metre of these cable routes
Telephone 0800 056 5866 in order that the Company's apparatus may be located on site and any necessary protection works agreed.

N.B. THRUST BORERS OR MOLES MUST NOT BE USED WITHIN THE VICINITY OF ANY CABLES BELONGING TO UK POWER NETWORKS WITHOUT FIRST CONTACTING THIS COMPANY.

1. The position of the apparatus shown on this drawing is believed to be correct but the original landmarks may have been altered since the apparatus was installed.
2. The exact position of the apparatus should be verified – use approved cable avoidance tools prior to excavation using suitable hand tools.
3. It is essential that trial holes are carefully made avoiding the use of mechanical tools or picks until the exact location of all cables have been determined.
4. It must be assumed that there is a service cable into each property, lamp column and street sign, etc.
5. All cables must be treated as being live unless proved otherwise by UK Power Networks.
6. The information provided must be given to all people working near UK Power Networks' plant & equipment. Do not use plans more than 3 months after the issue date for excavation purposes.
7. Please be aware that electric cables/lines belonging to other owners of licensed electricity distribution systems may be present and it is your responsibility to identify their location.

1. UK Power Networks Ltd does not warrant that the information provided to you is correct. You rely upon it at your own risk.
2. UK Power Networks Ltd does not exclude or limit its liability if it causes the death of a person or causes personal injury to a person where such death or personal injury is caused by its negligence.
3. Subject to paragraph 2, UK Power Networks Ltd has no liability to you in contract, in tort (including negligence), for breach of statutory duty or otherwise howsoever for any loss, damage, costs, claims, demands or expenses that you or any third party may suffer or incur as a result of using the information provided whether for physical damage to property or for any economic loss (including without limitation loss of profit, loss of opportunity, loss of savings, loss of goodwill, loss of business, loss of use) or any special or consequential loss or damage whatsoever.

Reproduced by permission of Ordnance Survey on behalf of HMSO. (c) Crown copyright and database right 2017. All rights reserved. Ordnance Survey Licence number 100019626. Data has been added to the Ordnance Survey base map; all proprietary rights in such additional data are and shall remain the exclusive property of (c) Eastern Power Networks plc or London Power Networks plc each being a distribution licensee under section 6(1)(c) of the Electricity Act 1989 for the relevant distribution services area as that term is defined in such licensee's distribution licence. All rights in such data reserved.

ADVICE TO CONTRACTORS ON AVOIDING DANGER FROM BURIED ELECTRICITY CABLES.

- 1) Do have cable drawings with you on site and check them before you start the excavation.
- 2) Do have a cable locator tool on site and use it to help you.
- 3) Mark out the location of electricity cables.
- 4) Do not use a mechanical excavator within 0.5m of electricity cables.
- 5) Use spades and shovels in preference to other tools.
- 6) Never disturb electricity cables and joints or their protective covers.

IF IN DOUBT – ASK! PHONE 0800 056 5866
EMERGENCY – If you damage a cable or line
Phone 0800 780 0780 (24hrs) URGENTLY

These basic safety precautions are explained in detail in the HSE booklet HS(G)47 – Avoiding Danger from Underground Services, a copy of which may be obtained from your supervisor or HMSO.

Please be aware that electric lines belonging to other owners of licensed electricity distribution systems may be present and it is your responsibility to identify their location.

Utilities Report



Affected Utilities

Virgin Media

CHECKED



ATKINS
The Hub
500 Park Avenue
Aztec West
Bristol
BS32 4RZ

Virgin Media
Field Services
Units 1-12
Broad Lane
Mayfair Business Park
Bradford
Yorkshire
BD4 8PW

Tel: 0870 888 3116 Opt 2
Fax: 01268 468557

Plant Enquiry Ref: VM.171349
Your Letter Date: 14.03.2017
Your Ref: 52948
Date: 15.03.2017

Hello,

Enquiry Location: Site off Watling Street, St Albans AL2 2PA

Thank you for your enquiry regarding work at the above location.

I enclose a copy of our above referenced drawing, marked to show the approximate position of plant owned and operated by Virgin Media.

You will be aware that you have a duty to ensure that no damage results to this equipment as a result of your proposed works. Please note that this apparatus may contain Fibre Optic, Coaxial and/or 240v Power Cables and as such, special care must be taken when excavating this area.

Should you require Virgin Media apparatus to be diverted we must agree a specification of works and provide a detailed estimate of costs. The costs are £720 (Business) or £240 (Residential) Inc VAT and the charge applies to each individual scheme requested.

Both the estimate and specification will be sent to you within 25 working days of when the payment was received.

This initial payment will cover the following: -

- Detailed site visit by an experienced planning engineer.(Up to 10 hours planning time)
- Detailed specification of works.
- Detailed breakdown of costs.

Payment is required in advance for the estimated cost of detailed design work and the charge applies whether or not your works proceed. Please supply us with your payment and a copy of your plans or drawings and quote 'Our Ref' as above.

The address to send the cheque is:

Diversiary Works, Virgin Media, 1 Dove Wynd, Strathclyde Business Park Bellshill ML4 3AL

Or if you prefer to talk, please call the Diversiary Team on: 0800 408 0088 Option 1

Yours faithfully

National Plant Enquiries Team



(c) Crown copyright and database rights 2017 Ordnance Survey 100019209

Date: 15/03/17

Scale: 1:7115

Map Centre: 514590,204537

Data updated: 05/03/17

Telecoms Plan A4

Important Information - please read The purpose of this plan is to identify Virgin Media apparatus. We have tried to make it as accurate as possible but we cannot warrant its accuracy. In addition, we caution that within Virgin Media apparatus there may be instances where mains voltage power cables have been placed inside green, rather than black ducting. Further details can be found using the "Affected Postcodes.pdf", which can be downloaded from this website. Therefore, you must not rely solely on this plan if you are carrying out any excavation or other works in the vicinity of Virgin Media apparatus. The actual position of any underground service must be verified by cable detection equipment, etc. and established on site before any mechanical plant is used. Accordingly, unless it is due to the negligence of Virgin Media, its employees or agents, Virgin Media will not have any liability for any omissions or inaccuracies in the plan or for any loss or damage caused or arising from the use of and/or any reliance on this plan. This plan is produced by Virgin Media Limited (c) Crown copyright and database rights 2017 Ordnance Survey 100019209.

Duct, Trench



Chamber



Cabinet



sultan.mohammed@virginmedia.co.uk

VM.171349



Utilities Report

Not Affected Utilities

Some Utility Companies have replied to confirm they would not be affected by work on, or close to, the search area. Their responses are enclosed in the following pages for your records.

Priya, Shubha

From: Lands <Lands@BPA.CO.UK>
Sent: 16 March 2017 19:00
To: Statutory Enquiries
Subject: RE: Plant Enquiry - 52948 - Site off Watling Street, St Albans - enquiry: LSBUD-170224-9953269 - Please respond by 16/03/2017

Dear Sirs/Madam

BPA Pipelines

NOT IN ZONE OF INTEREST

Thank you for your correspondence enclosing details of your proposals as listed above. We are not aware that any of BPA Pipelines apparatus, falls within the vicinity of the above noted location. However, if the location of your work should change, please complete a new Linesearch enquiry immediately, using www.linesearch.org. Whilst we try to ensure the information we provide is accurate, the information is provided Without Prejudice and we accept no liability for claims arising from any inaccuracy, omissions or errors contained herein.

Yours faithfully

BPA Pipelines
lands@bpa.co.uk

From: Statutory Enquiries [mailto:AtkinsStatutory.Enquiries@atkinsglobal.com]
Sent: 24 February 2017 6:28 AM
To: Lands <Lands@BPA.CO.UK>
Subject: Plant Enquiry - 52948 - Site off Watling Street, St Albans - enquiry: LSBUD-170224-9953269 - Please respond by 16/03/2017

Our Reference: 52948
Site Name: Site off Watling Street, St Albans
Works Description: Development Appraisal
Site Grid References: 514590 204537,514648 204333,514499 204436,514537 204851,514500 204223

To whom it may concern,

Please find enclosed a plant enquiry for your attention.

We request plans showing the location of your company's affected plant in relation to the [entire site area shown within the boundary on the attached map](#). Grid references and postcodes relative to the site boundary are provided on the attached map to help you locate the site.

Within your response please quote our reference number and the name of the site shown above. If you do not have any apparatus in this area, please could you send written confirmation to declare that no apparatus is affected. Please also include information relating to the use and location of Radio Frequency Identification Devices (RFIDs) where available.

It would be greatly appreciated if you could respond to this enquiry by 16/03/2017. Your prompt response will assist with our clients proposals in your interests of plant protection.

If you have any queries in relation to this plant enquiry please do not hesitate to contact us.

Kind regards,

Priya, Shubha

From: Plantenquiries <plantenquiries@catelecomuk.com>
Sent: 01 March 2017 17:46
To: Statutory Enquiries
Subject: RE: Plant Enquiry - 52948 - Site off Watling Street, St Albans - Please respond by 16/03/2017

Please Note: Our search criteria has changed. We previously searched for Colt Network which was within 200 metres, this has now changed to 50 metres. The negative response will be for all enquiries that the network is 50 metres or more away from the place of enquiry.

Dear Sir/Madam,

Thank you for your enquiry for the above reference.

We can confirm that Colt Technology Services do not have apparatus near the above location as presented on your submitted plan, if any development or scheme amendments fall outside the 50 metre perimeter new plans must be submitted for review.

Search is based on Overseeing Organisation Agent data supplied; we do not accept responsibility for O.O. Agent inaccurate data.

If we can be of any further assistance please do not hesitate to contact us.

Kind regards,

Plant Enquiry Team

Please consider the environment before printing this email.

This e-mail and any files transmitted with it are confidential and are intended solely for the use of the intended recipient(s). If you are not the intended recipient, you must not copy, distribute or take any action based on this communication. If you have received this communication in error please contact plantenquiries@catelecomuk.com and delete this communication and any copies of it. Any views or opinions presented are solely those of the author and do not necessarily represent those of C A Telecom LTD. C A Telecom LTD monitors e-mails to ensure that its systems operate effectively and to minimise the risk of viruses.

-----Original Message-----

From: atkinsstatutory.enquiries@atkinglobal.com [mailto:atkinsstatutory.enquiries@atkinglobal.com]

Sent: 24 February 2017 06:28

To: [Plantenquiries <plantenquiries@catelecomuk.com>](mailto:plantenquiries@catelecomuk.com); plantenquiries@energetics-uk.com; enquiries@environment-agency.gov.uk; plantenquiries@instalcom.co.uk; plantenquiries@mcnicholas.co.uk; plantenquiries@mcnicholas.co.uk; opburiedservicesenquiries@networkrail.co.uk; interoute.enquiries@plancast.co.uk; nrswa@sky.uk; osp-team@uk.verizon.com; osp-team@uk.verizonbusiness.com; osm.enquiries@atkinglobal.com

Cc: atkinsstatutory.enquiries@atkinglobal.com

Subject: Plant Enquiry - 52948 - Site off Watling Street, St Albans - Please respond by 16/03/2017



We have checked CityFibre's website and in this instance your area is not affected.

Priya, Shubha

From: Plant Enquiries <plantenquiries@energetics-uk.com>
Sent: 24 February 2017 19:27
To: Statutory Enquiries
Subject: RE: Plant Enquiry - 52948 - Site off Watling Street, St Albans - Please respond by 16/03/2017

Dear Sir/Madam,

Thank you for submitting your recent plant enquiry.

Based on the information provided, I can confirm that Energetics does not have any plant within the area(s) specified in your request.

Please be advised that it may take around 10 working days to process enquiries. In the unlikely event that you have been waiting longer than 10 working days, or require further assistance with outstanding enquiries, please call 01698 404945.

Please ensure all plant enquiries are sent to plantenquiries@energetics-uk.com

Regards

Plant Enquiries

E: plantenquiries@energetics-uk.com
W: www.energetics-uk.com



International House, Stanley Boulevard, Hamilton International Technology Park, Glasgow



-----Original Message-----

From: atkinsstatutory.enquiries@atkinsglobal.com [mailto:atkinsstatutory.enquiries@atkinsglobal.com]
Sent: 24 February 2017 06:28
To: plantenquiries@catelecomuk.com; Plant Enquiries; enquiries@environment-agency.gov.uk;
plantenquiries@instalcom.co.uk; plantenquiries@mcnicholas.co.uk; plantenquiries@mcnicholas.co.uk;
opburiedservicesenquiries@networkrail.co.uk; interoute.enquiries@plancast.co.uk; nrswa@sky.uk; osp-team@uk.verizon.com; osp-team@uk.verizonbusiness.com; osm.enquiries@atkinsglobal.com
Cc: atkinsstatutory.enquiries@atkinsglobal.com
Subject: Plant Enquiry - 52948 - Site off Watling Street, St Albans - Please respond by 16/03/2017

This email and any attached files are confidential and copyright protected. If you are not the addressee, any dissemination of this communication is strictly prohibited. Unless otherwise expressly agreed in writing, nothing stated in this communication shall be legally binding.

The ultimate parent company of the Atkins Group is WS Atkins plc. Registered in England No. 1885586. Registered Office Woodcote Grove, Ashley Road, Epsom, Surrey KT18 5BW. A list of wholly owned Atkins Group companies registered in the United Kingdom and locations around the world can be found at <http://www.atkinsglobal.com/site-services/group-company-registration-details>

Consider the environment. Please don't print this e-mail unless you really need to.

Priya, Shubha

From: plantenquiryservice@gtc-uk.co.uk
Sent: 24 February 2017 11:30
To: Statutory Enquiries
Subject: GTC Plant Enquiry - Ref- 383345
Attachments: 383345.png

GTC Apparatus Not Found In Search Area

Our Plant Enquiry Service Ref: 383345
Your Enquiry Ref: LM 52948/SuG

Dear Chrissy,

Thank you for your enquiry concerning apparatus in the vicinity of your proposed work. GTC can confirm that we have no apparatus in the vicinity but please note that other asset owners may have and ensure all utility owners have been consulted. For your records, the search area is shown in the attached map.

Please note our assets now include those owned and operated by:

- GTC Pipelines Limited
- Independent Pipelines Limited
- Quadrant Pipelines Limited
- Electricity Network Company Limited
- Independent Power Networks Limited
- Independent Water Networks Limited
- Independent Fibre Networks Limited
- Independent Community Heating Limited

If you have any queries or require any further information please do not hesitate to contact us.

Your sincerely,

GTC Plant Enquiry Service.

GTC
Energy House
Woolpit Business Park
Woolpit
Bury St Edmunds
Suffolk, IP30 9UP
Tel: 01359 240363
plant.enquiries@gtc-uk.co.uk

NOTE:

This E-Mail originates from GTC, Energy House, Woolpit Business Park, Woolpit, Bury St Edmunds, Suffolk, IP30 9UP

VAT Number: GB688 8971 40. Registered No: 029431.

DISCLAIMER

The information in this E-Mail and in any attachments is confidential and may be privileged. If you are not the intended