

## NORTH HEMEL HEMPSTEAD LANDSCAPE ASSESSMENT

### APPENDIX A: Key Viewpoint Photographs

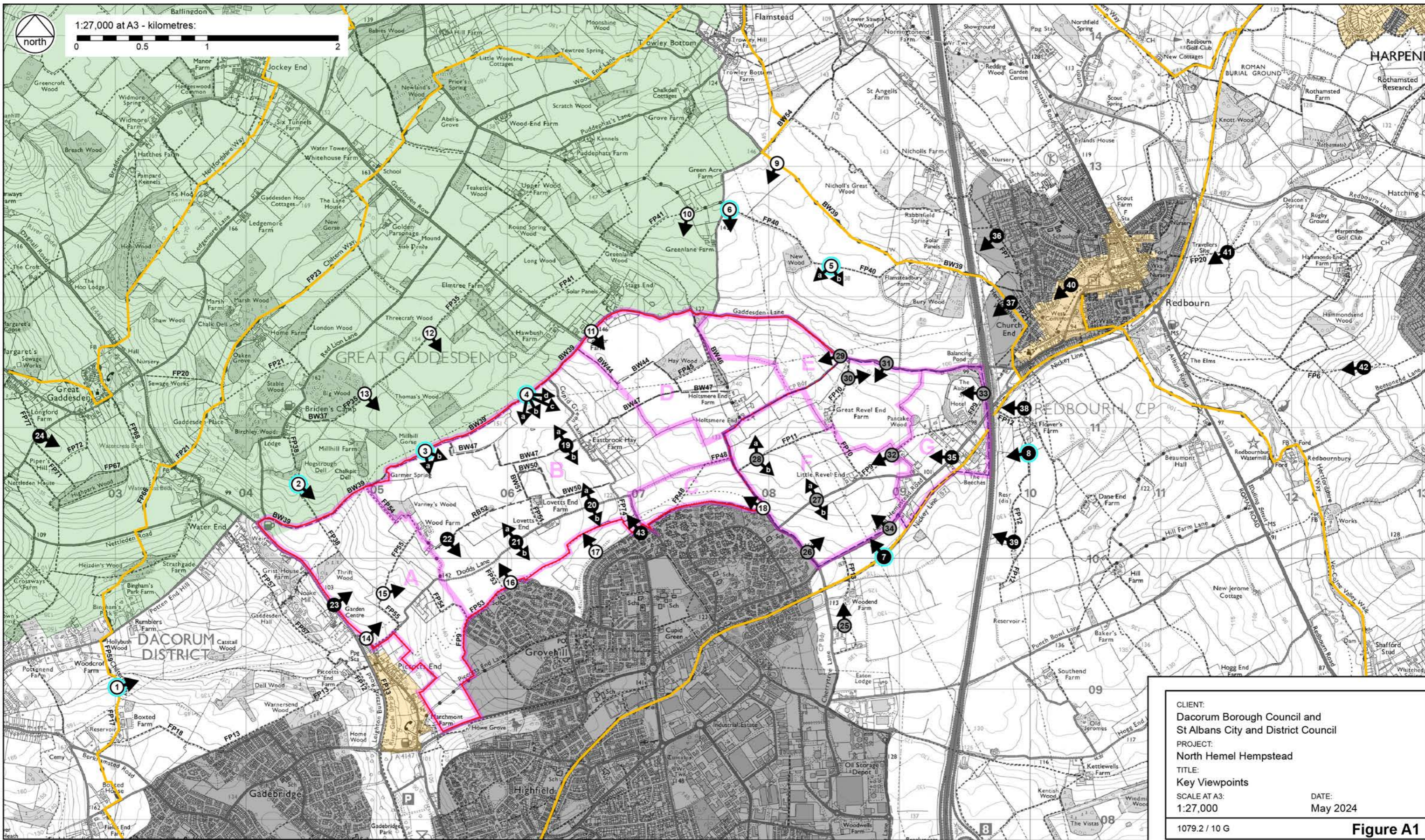
Rev F

Photographs	Date taken
1 to 6	June 2023
7 and 8	December 2023
9 to 18	June 2023
19 to 24	April 2023
25 to 34	November 2023
35 to 42	December 2023
43	April 2023

Key viewpoint locations are mapped on Figure A1.

#### HDA LVA Photography Methodology:

- Take advice and agree locations and directions for photographs as necessary.
- Visit site to take existing situation photographs as appropriate, including from agreed positions if applicable.
- Photographs should be taken in accordance with the TGN 06/19 from the Landscape Institute. Although the guidance states that the use of 35mm colour film and a 50mm focal length is still valid, traditional film and associated cameras have been almost entirely supplanted by digital image processing and associated digital cameras. Therefore a digital equivalent of 50mm focal length on a 35mm film camera, should be used.
- HDA uses a Nikon D5100 camera fitted with a AF-S DX NIKKOR 18-105mm f/3.5-5.6G ED VR lens. The Nikon D5100 camera uses DX technology in its sensor which requires a x1.5 crop factor in order to replicate a traditional 35mm film camera. Therefore the Nikon D5100 should be set to 35mm focal length as the closest equivalent to a traditional 50mm lens i.e.  $35\text{mm} \times 1.5 = 52.5\text{mm}$ .
- Whilst on site, the Nikon D5100 is connected to a 'Solemata Geotagger Pro2' GPS device which records the location and elevation of each photograph taken, by imbedding the GPS information into the metadata of each photograph file. As a check, the position and directions of photographs should also be noted onto a paper copy of site survey as accurately as possible by hand.
- On return from site, collate existing situation photographs and document photograph locations and directions.



CLIENT:  
Dacorum Borough Council and  
St Albans City and District Council

PROJECT:  
North Hemel Hempstead

TITLE:  
Key Viewpoints

SCALE AT A3: 1:27,000

DATE:  
May 2024

1079.2 / 10 G **Figure A1**

**KEY**

General study area - Dacorum	AONB	Long Distance Path	Photograph location (summer photo)	Photograph with wireframes
General study area - St Albans	Conservation area	Public rights of way numbers BW = Bridleway FP = Footpath RB = Restricted Byway	Photograph location (winter photo)	
Assessment parcels	Settlement policy area		Photograph location (autumn photo)	

Based on Ordnance Survey mapping with permission of Her Majesty's Stationery Office  
Licence no. AR187372

hankinson duckett associates  
The Stables, Howbery Park, Benson Lane, Wallingford, OX10 8BA  
t 01491 838175 e consult@hda-enviro.co.uk w www.hda-enviro.co.uk

**Landscape Architecture  
Masterplanning  
Ecology**



**Photograph 1** Looking north-east towards the study area, from the Chiltern Way Long Distance Path (summer view).



**Photograph 2** Looking south-east into the study area, from public footpath 38 within the AONB (summer view).

Assessment Parcel B

Northern edge  
of Grovehill



**Photograph 3** Looking south-east directly into Assessment Parcel B, from public bridleway 39 along the edge of the AONB (summer view).

*photograph continues below*

Varney's Wood



*photograph 3 continued from above*



**Photograph 4** Looking south towards the study area, from North Newington Road public bridleway 39 at the southern edge of the AONB (summer view).

*photograph continues below*



*photograph 4 continued from above*



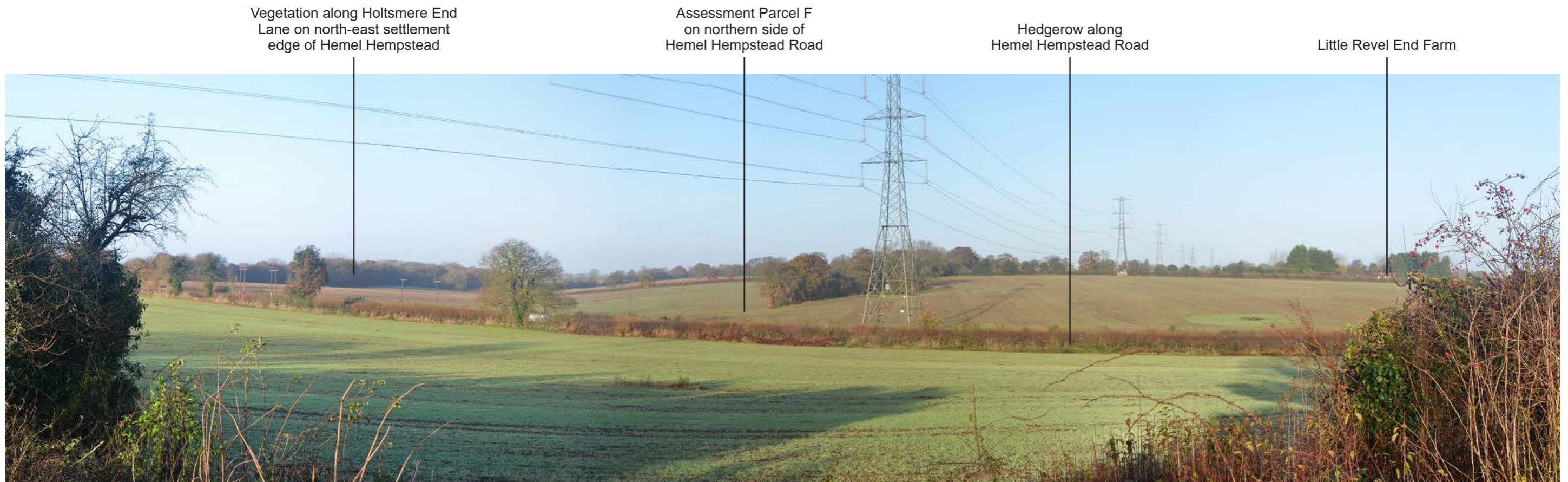
**Photograph 5a** Looking south-west towards the study area, from public footpath 40 (summer view).



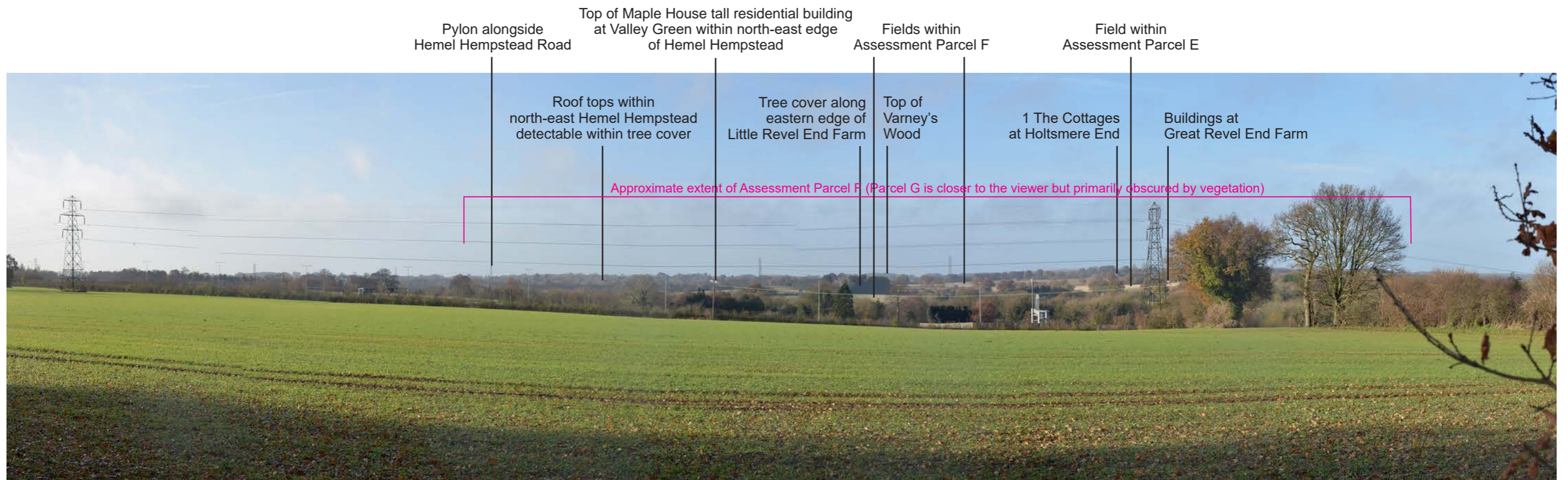
**Photograph 5b** Looking south towards the study area, from public footpath 40 (summer view).



**Photograph 6** Looking south towards the study area, from the western end of public footpath 40 near the edge of the AONB (summer view).



**Photograph 7** Looking north-west over Hemel Hempstead Road and into assessment parcel F, from the Nickey Line, through a gap in vegetation along the route (winter view).



**Photograph 8** Looking west towards the study area, from public footpath 12 south of Flower's Farm, through a gap in vegetation along the route (winter view).



**Photograph 9** Looking south-west towards the study area, from Hertfordshire Way Long Distance Path (public bridleway 39) (summer view).



The assessment parcels are obscured



**Photograph 10** Looking south-west towards the study area, from public footpath 41 near Whitehouse, within the AONB (summer view).

Hay Wood

Tree cover obscures the assessment parcels

Rooftops of dwellings within north Hemel Hempstead



**Photograph 11** Looking south towards the site, through gap in roadside hedge, from Gaddesden Lane on the southern edge of the AONB (summer view).

Pylon marks approximate southern edge of AONB

Tree cover obscures the assessment parcels

Approx extents of assessment parcel A-D  
(obscured by vegetation)



**Photograph 12** Looking south-east towards the study area, from footpath 35 within the AONB (summer view).



**Photograph 13** Looking south-east towards the study area, from footpath 35 within the AONB (summer view).

*photograph continues below*



*photograph 13 continued from above*

Varney's Wood

Wood Farm

Approximate extent of Assessment Parcel A

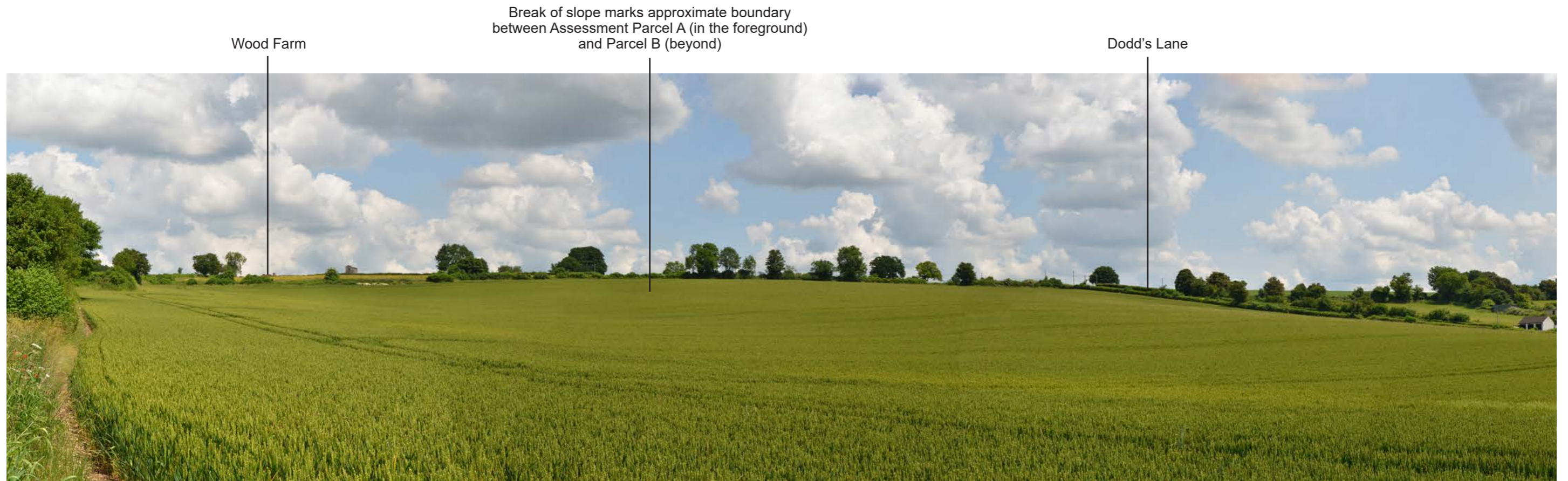


Photograph 14 Looking north-east over roadside hedge and into the study area, from Mill Close (summer view).

*photograph continues below*

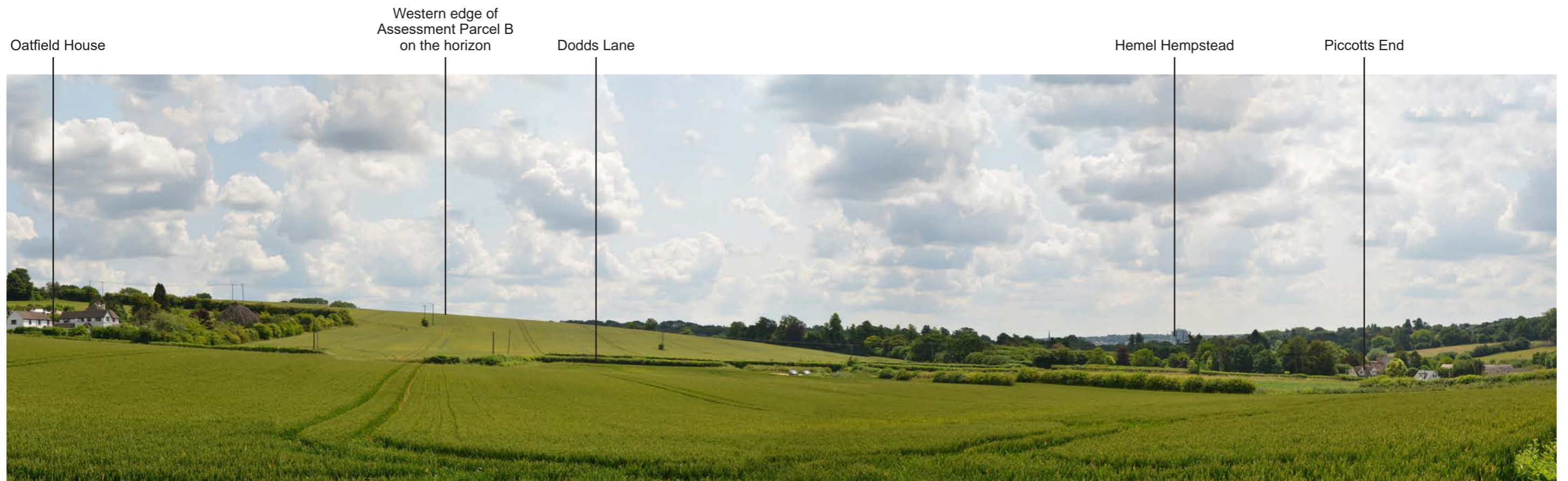


*photograph 14 continued from above*



**Photograph 15** Looking east across the study area, from public footpath 55, within Assessment Parcel A (summer view).

*photograph continues below*



*photograph 15 continued from above*

Assessment Parcel B

Wood Farm Varney's Wood

Dodds Lane



Photograph 16 Looking north-west across the study area, from public footpath 31, on the edge of Assessment Parcel B (summer view).

photograph continues below

Pylon marks southern edge of AONB

Dodds Lane

Trees and properties south of Lovetts End Farm



photograph 16 continued from above

Dwellings along  
Argll Road, Hutton Close  
and Ninian Road

Tree cover obscures majority  
of Assessment Parcel B



Photograph 17 Looking north-east towards the study area, from Grovehill Playing Fields (summer view).

*photograph continues below*

Hay Wood

Assessment Parcels B and C



*photograph 17 continued from above*

Assessment Parcel C

Break of slope marks approximate  
boundary between  
Assessment Parcels C and B



**Photograph 18** Looking north-west into the study area, from adjacent to public bridleway 128, within Assessment Parcel C, within Assessment Parcel C (summer view).





**Photograph 19a** Looking north-west from the northern edge of the study area (Assessment Parcel B), from public bridleway 47 (winter view).

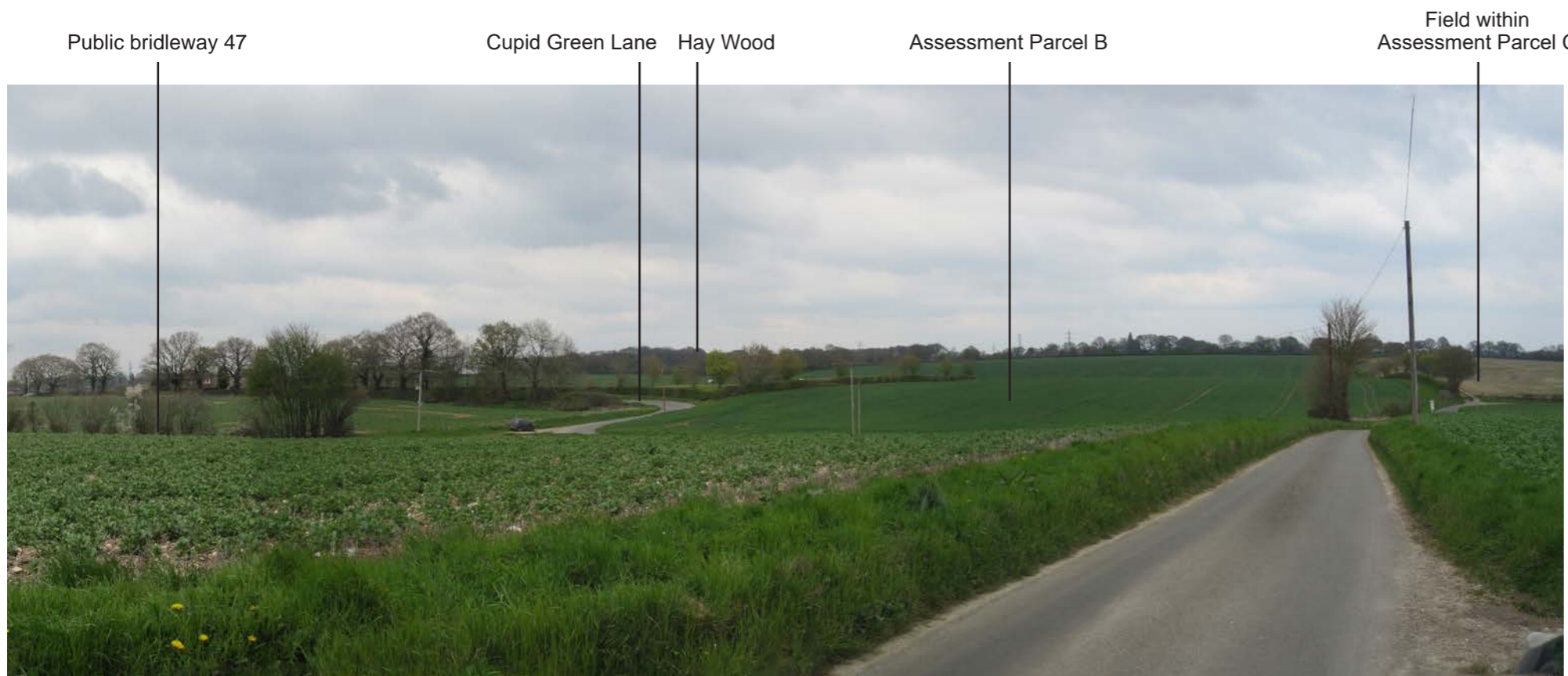


**Photograph 19b** Looking south-east from the northern edge of the study area, from public bridleway 47 (winter view).

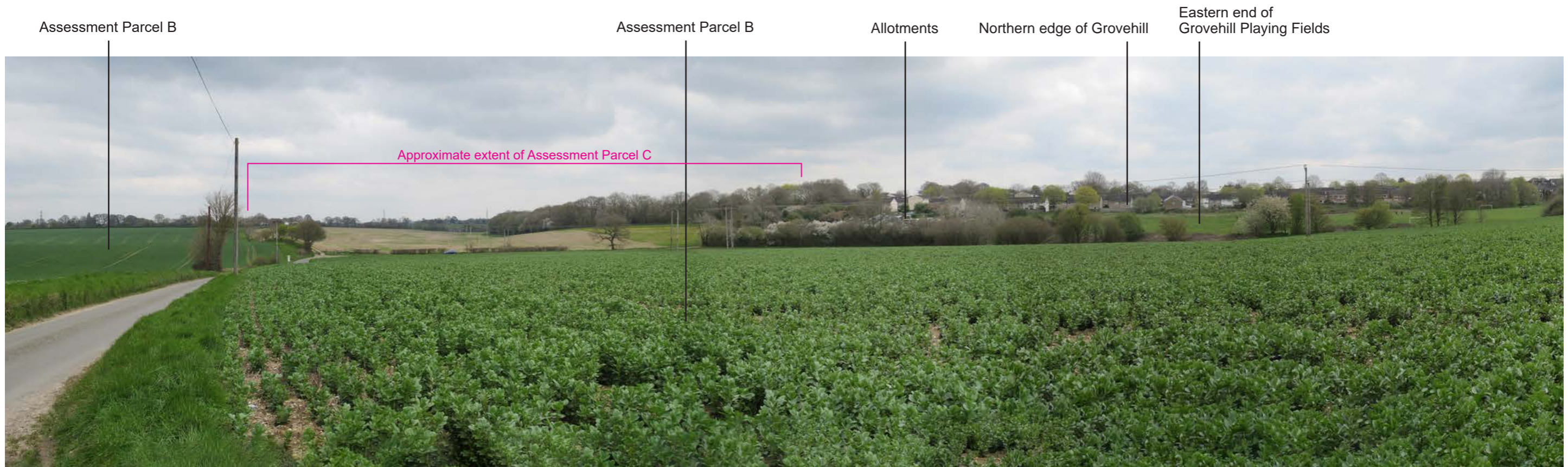


**Photograph 20a** Looking north-west from Dodds Lane, within Assessment Parcel B (winter view).

*photograph continues below*



*photograph 20a continued from above*

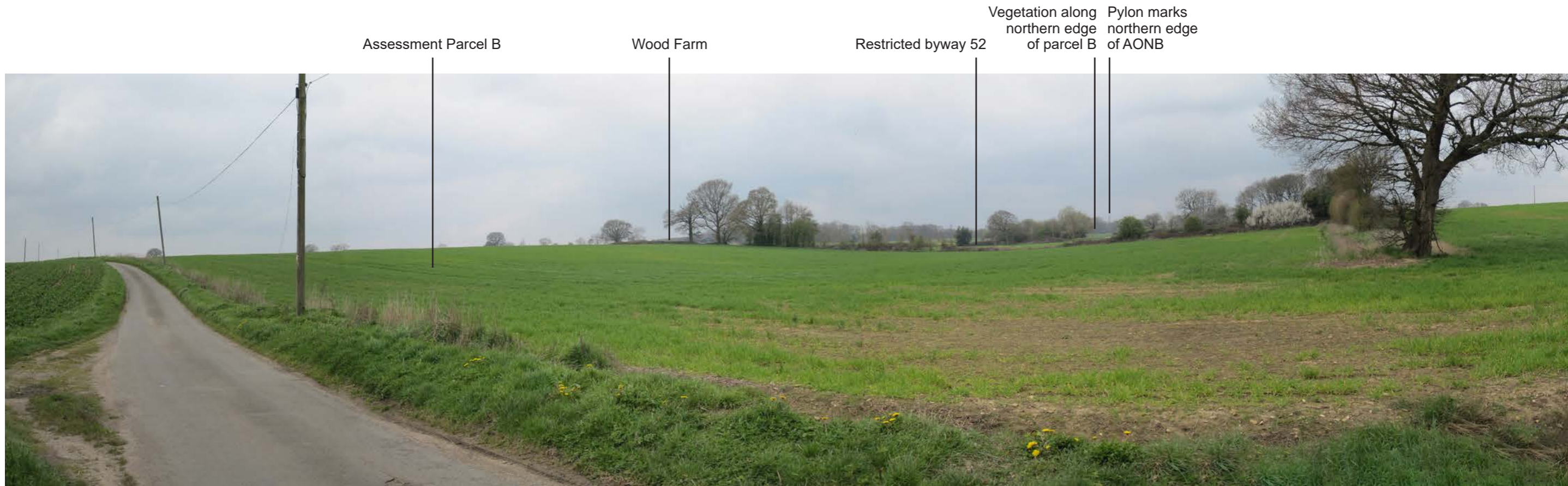


**Photograph 20b** Looking south-east from Dodds Lane (winter view).

*photograph continues below*



*photograph 20b continued from above*



**Photograph 21a** Looking north-west across Assessment Parcel B, from Dodds Lane (winter view).

*photograph continues below*



*photograph 21a continued from above*

Assessment Parcel B



Photograph 21b Looking south-east across Assessment Parcel B, from Dodds Lane (winter view).

*photograph continues below*

Northern edge of  
Grovehill

Assessment Parcel B



*photograph 21b continued from above*

Dwellings south  
of Lovetts End Farm

Assessment Parcel B

Dodds Lane  
(obscured by topography)

Northern edge  
of Grovehill  
notable in winter



**Photograph 22** Looking south-east across Assessment Parcel B, from restricted byway 52 (winter view).

*photograph continues below*

Lane between Dodds Lane  
and Wood Farm



*photograph 22 continued from above*

Assessment Parcel A visible over/through roadside vegetation in winter



Photograph 23 Looking north-east towards the study area, over roadside hedge, from Leighton Buzzard Road (B440) (winter view).

Gaddesden Place

Varney's Wood

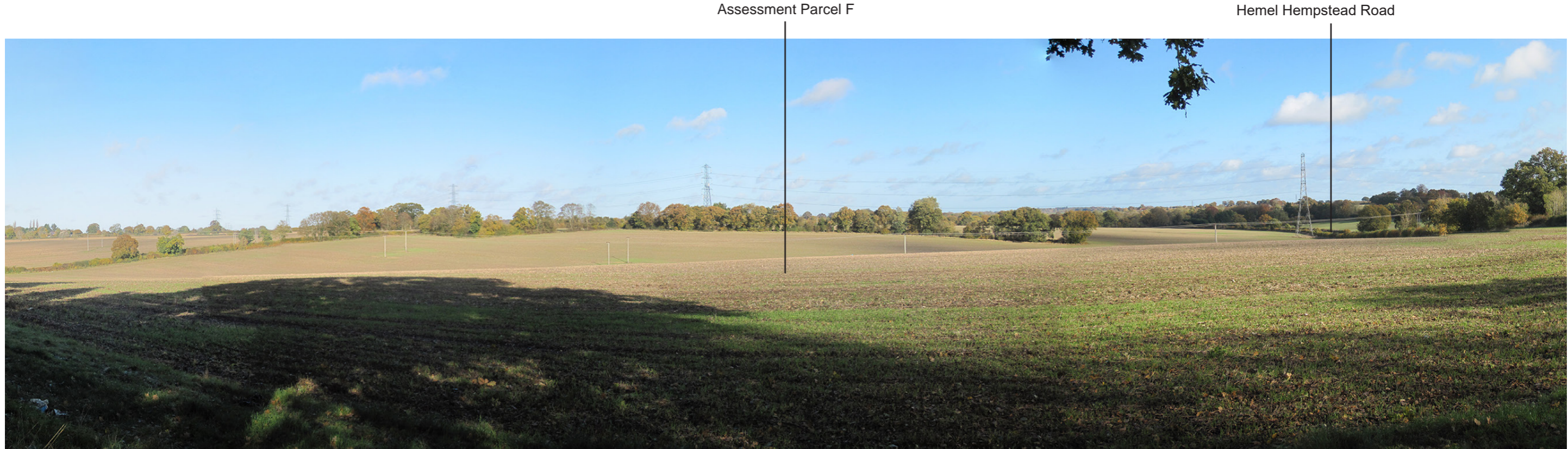
Dwellings on northern edge of Grovehill



Photograph 24 Looking south-east towards the study area, from adjacent to public footpath 71 (winter view).



Photograph 25 Looking north towards the study area, from public footpath 13 (autumn view).



Photograph 26 Looking east across assessment parcel F, through gap in vegetation along Holtsmere End Lane (autumn view).



Assessment Parcel E



Photograph 27a Looking north across assessment parcel E from lane to Little Revel End Farm (autumn view).

*photograph continues below*



*photograph 27a continued from above*

Assessment Parcel E



**Photograph 27b** Looking south across assessment parcel E from lane to Little Revel End Farm (autumn view).

Assessment Parcel E



Photograph 28a Looking north across assessment parcel E from public footpath 11 (autumn view).

Assessment Parcel E

Slopes between M1 and  
Nickey Line

Hemel Hempstead Road



Photograph 28b Looking south-east across assessment parcel E from public footpath 11 (autumn view).

Assessment Parcel E



Photograph 29 Looking west through gap in vegetation into assessment parcel E, Gaddesden Lane (autumn view).

Assessment Parcel E      Gaddesden Lane (north edge of assessment parcel E)      Bury Wood      Redbourn set down behind intervening landform and vegetation      Trees around Harpenden Golf Club      Traffic along M1      Southern edge of Hatching Green



Photograph 30 Looking east across assessment parcel E from public footpath 10 (autumn view).

Assessment parcel E



**Photograph 31** Looking south-west into assessment parcel E, from Gaddesden Lane (autumn view).

*photograph continues below*

Assessment parcel E



*photograph 31 continued from above*



**Photograph 32** Looking west across assessment parcel F from public footpath 9 (autumn view).

*photograph continues below*



*photograph 32 continued from above*



**Photograph 33** Looking west within assessment parcel G, from The Aubreys Fort scheduled monument (autumn view).

*photograph continues below*

View through to rising ground to the north



*photograph 33 continued from above*

Assessment Parcel E  
visible through gap in vegetation



Photograph 34 Looking north-west towards assessment parcel E from Hemel Hempstead Road (autumn view).

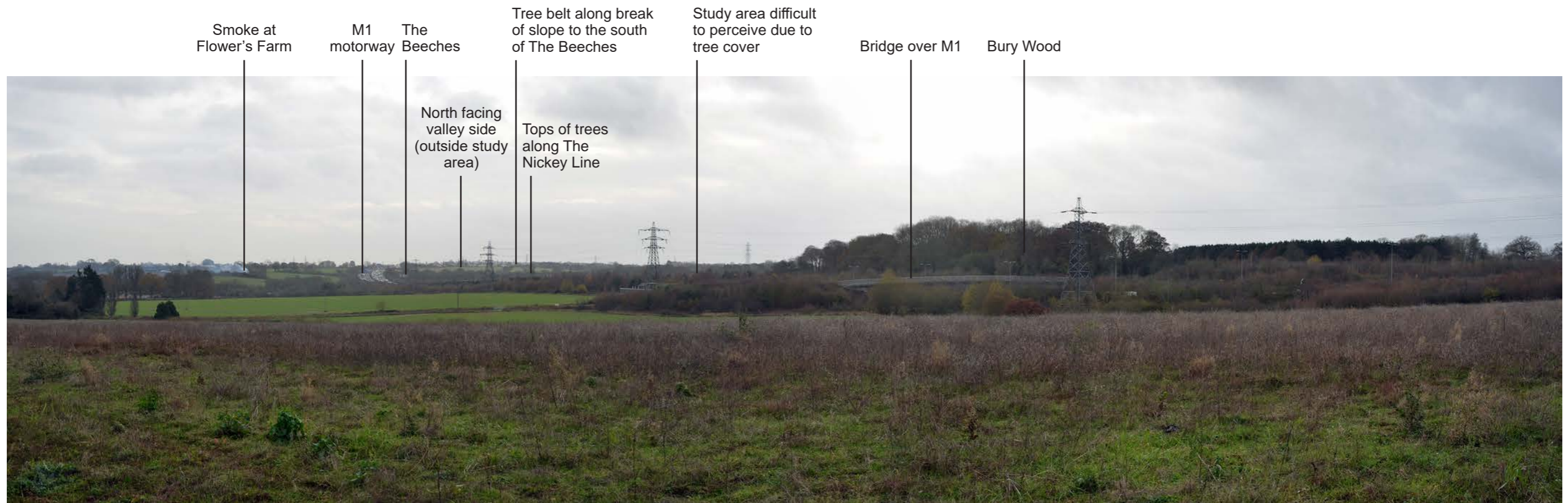
Assessment Parcel F obscured  
by vegetation along boundaries  
associated with development

Assessment Parcel G



Photograph 35 Looking north-west towards into assessment parcel G, from bus stop along Hemel Hempstead Road (winter view).

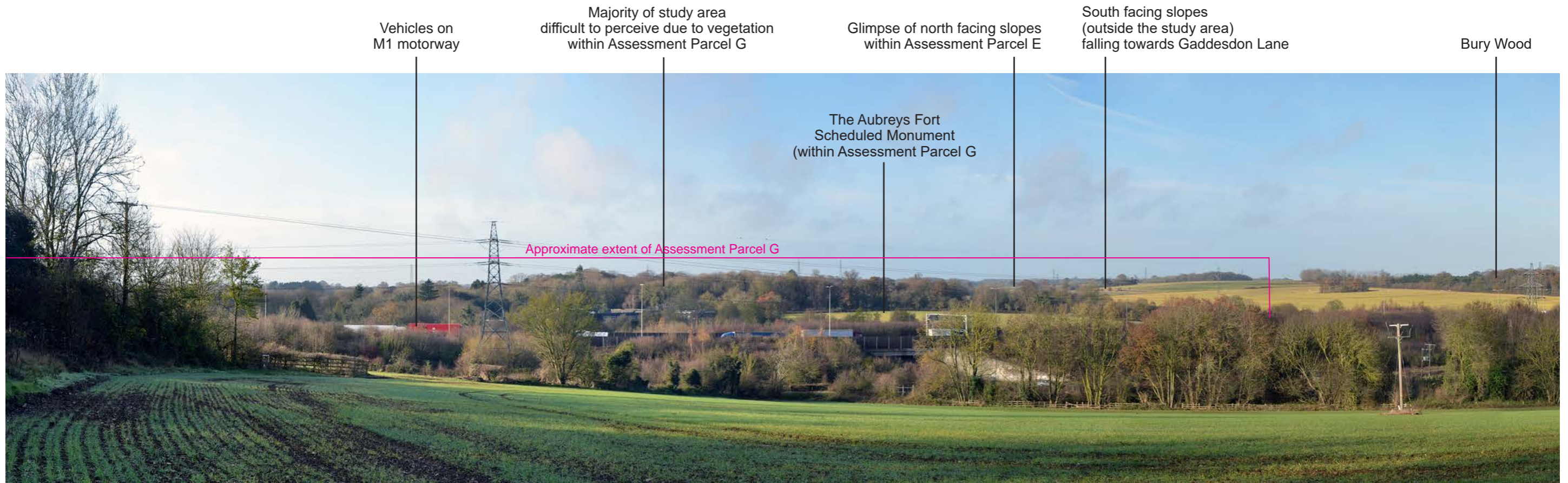




**Photograph 36** Looking south-west towards the study area, from public footpath 7 along the western edge of Redbourn (winter view).



**Photograph 37** Looking south-west towards the study area, from public footpath 21 (part of Hertfordshire Way) (winter view).



**Photograph 38** Looking west towards the study area, from public footpath 12 north of Flower's Farm (winter view).



**Photograph 39** Looking west towards the study area, from public footpath 12 south of Flower's Farm (winter view).

Intervening vegetation and development obscure the study area



Photograph 40 Looking south-west towards the study area, from Redbourn Common (winter view).

Smoke at Flower's Farm

Majority of study area difficult to perceive

Buildings at Great Revel End Farm

Dwellings within Redbourn

North facing slopes of Assessment Parcel E

Approximate extent of Assessment Parcel E



Photograph 41 Looking south-west towards the study area, from public footpath 20 east of Redbourn (winter view).



Photograph 42 Looking south-west towards the study area, from public footpath 6 near the southern edge of Hatching Green (winter view).



Photograph 43 Looking north-west into the study area, from Squires Ride (winter view).