

Brookbanks

Consulting

Historical Aerial Photography

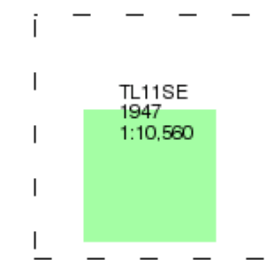
Published 1947

Source map scale - 1:10,560

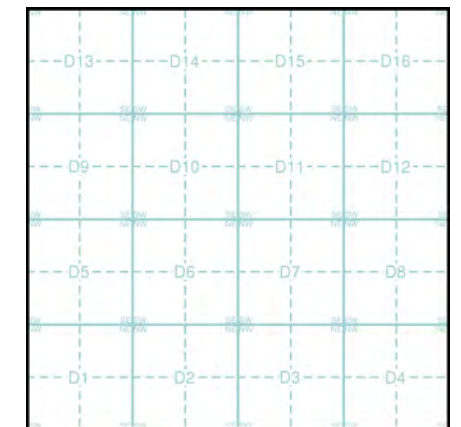
The Historical Aerial Photos were produced by the Ordnance Survey at a scale of 1:1,250 and 1:10,560 from Air Force photography. They were produced between 1944 and 1951 as an interim measure, pending preparation of conventional mapping, due to post war resource shortages. New security measures in the 1950's meant that every photograph was re-checked for potentially unsafe information with security sites replaced by fake fields or clouds. The original editions were withdrawn and only later made available after a period of fifty years although due to the accuracy of the editing, without viewing both revisions it is not easy to spot the edits. Where available Landmark have included both revisions.

© Landmark Information Group and/or Data Suppliers 2010.

Map Name(s) and Date(s)



Historical Aerial Photography - Slice D



Order Details

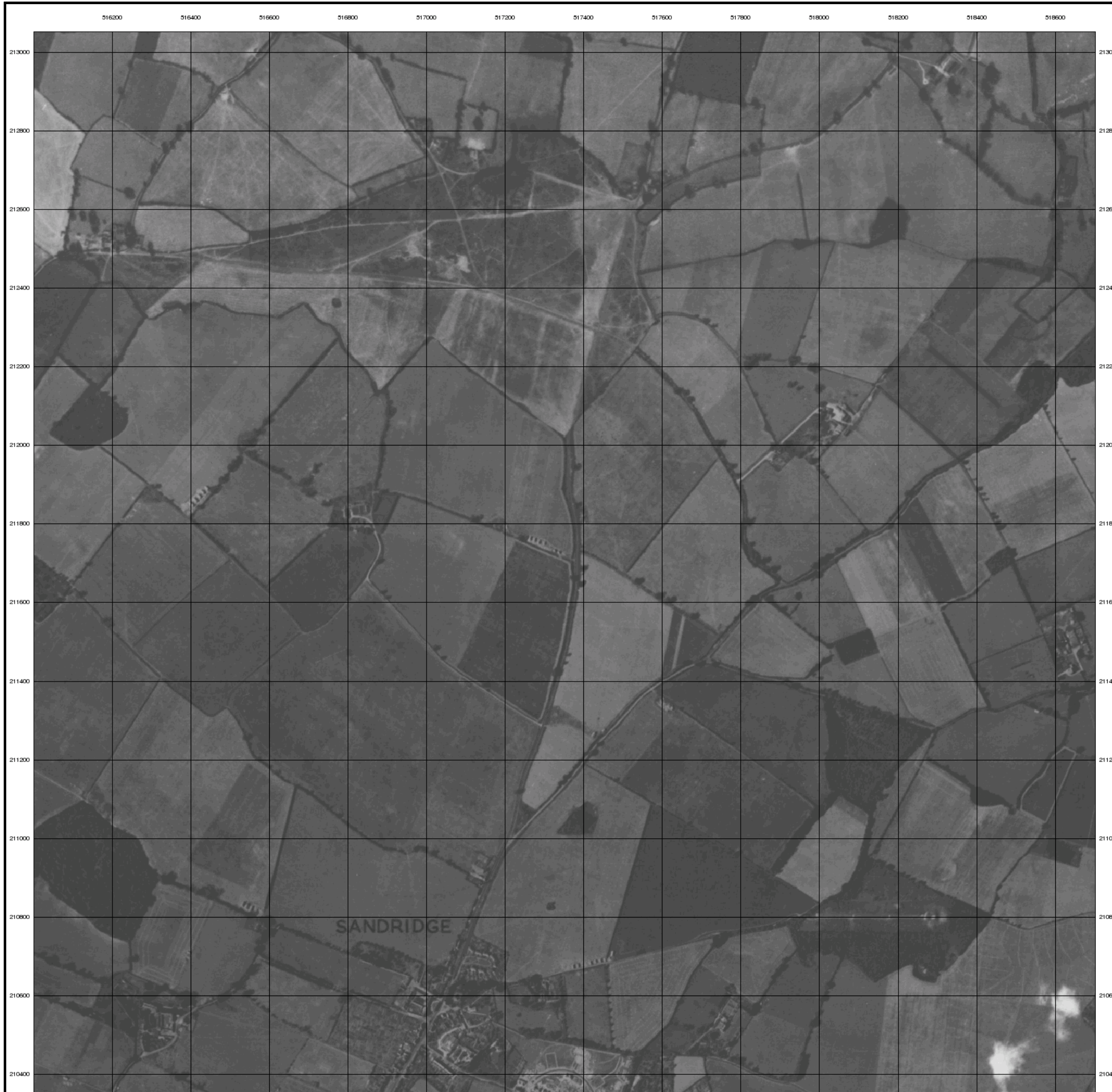
Order Number: 345196291_1_1
 Customer Ref: PO01119
 National Grid Reference: 516260, 210820
 Slice: D
 Site Area (Ha): 51.71
 Search Buffer (m): 1000

Site Details

St Albans

Landmark
 INFORMATION GROUP

Tel: 0844 844 9952
 Fax: 0844 844 9951
 Web: www.envirocheck.co.uk

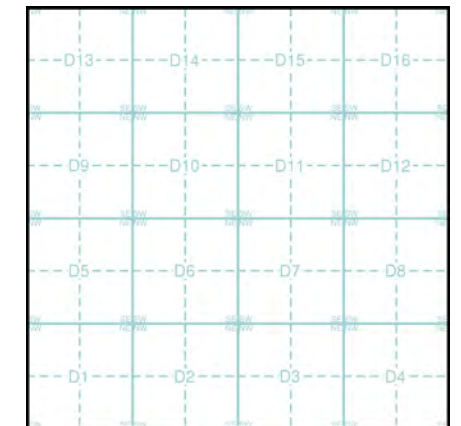


The historical maps shown were reproduced from maps predominantly held at the scale adopted for England, Wales and Scotland in the 1840's. In 1854 the 1:2,500 scale was adopted for mapping urban areas; these maps were used to update the 1:10,560 maps. The published date given therefore is often some years later than the surveyed date. Before 1938, all OS maps were based on the Cassini Projection, with independent surveys of a single county or group of counties, giving rise to significant inaccuracies in outlying areas. In the late 1940's, a Provisional Edition was produced, which updated the 1:10,560 mapping from a number of sources. The maps appear unfinished - with all military camps and other strategic sites removed. These maps were initially overprinted with the National Grid. In 1970, the first 1:10,000 maps were produced using the Transverse Mercator Projection. The revision process continued until recently, with new editions appearing every 10 years or so for urban areas.

Map Name(s) and Date(s)

027SE	1951	1:10,560
034NE	1951	1:10,560

Historical Map - Slice D

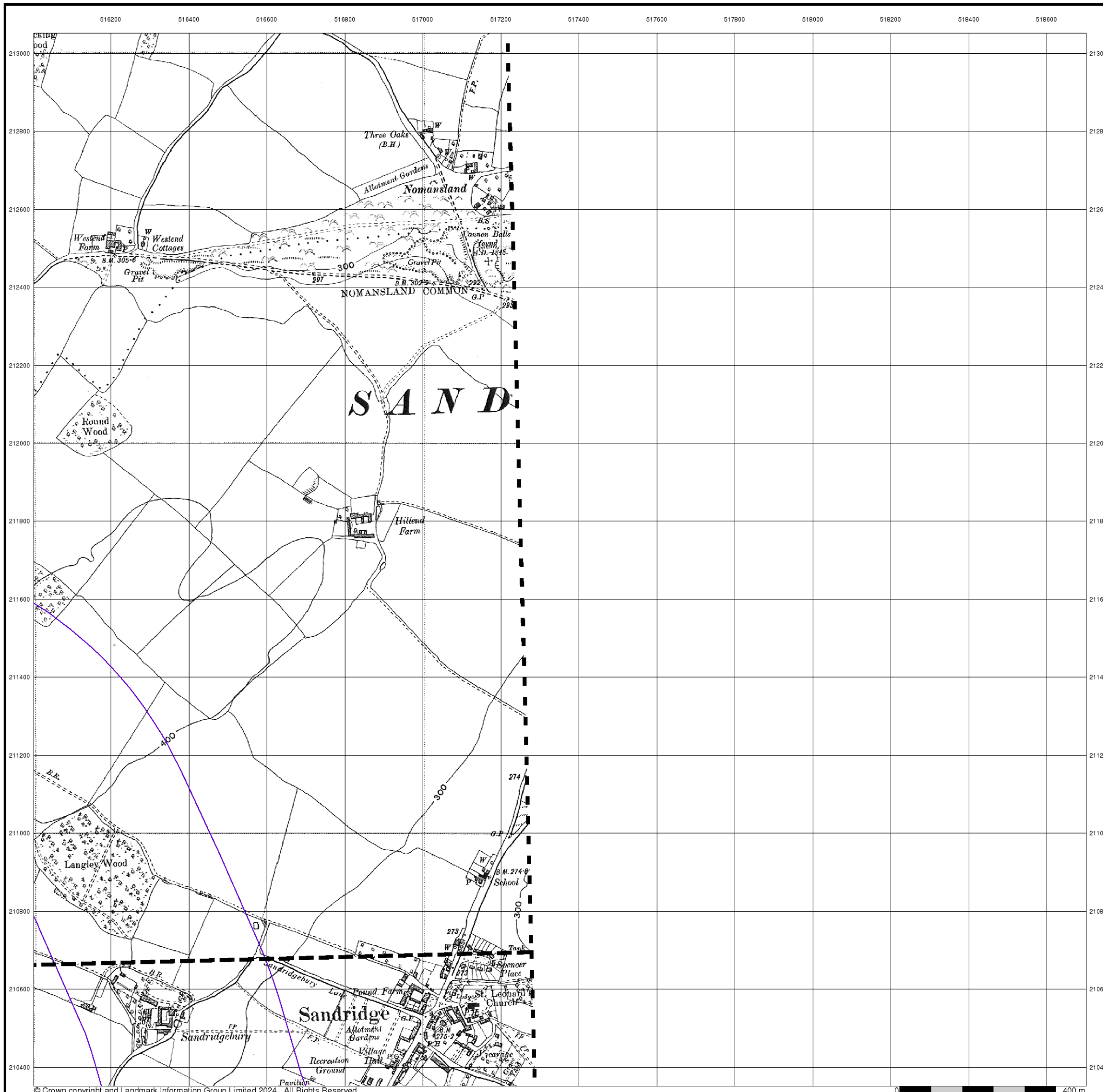


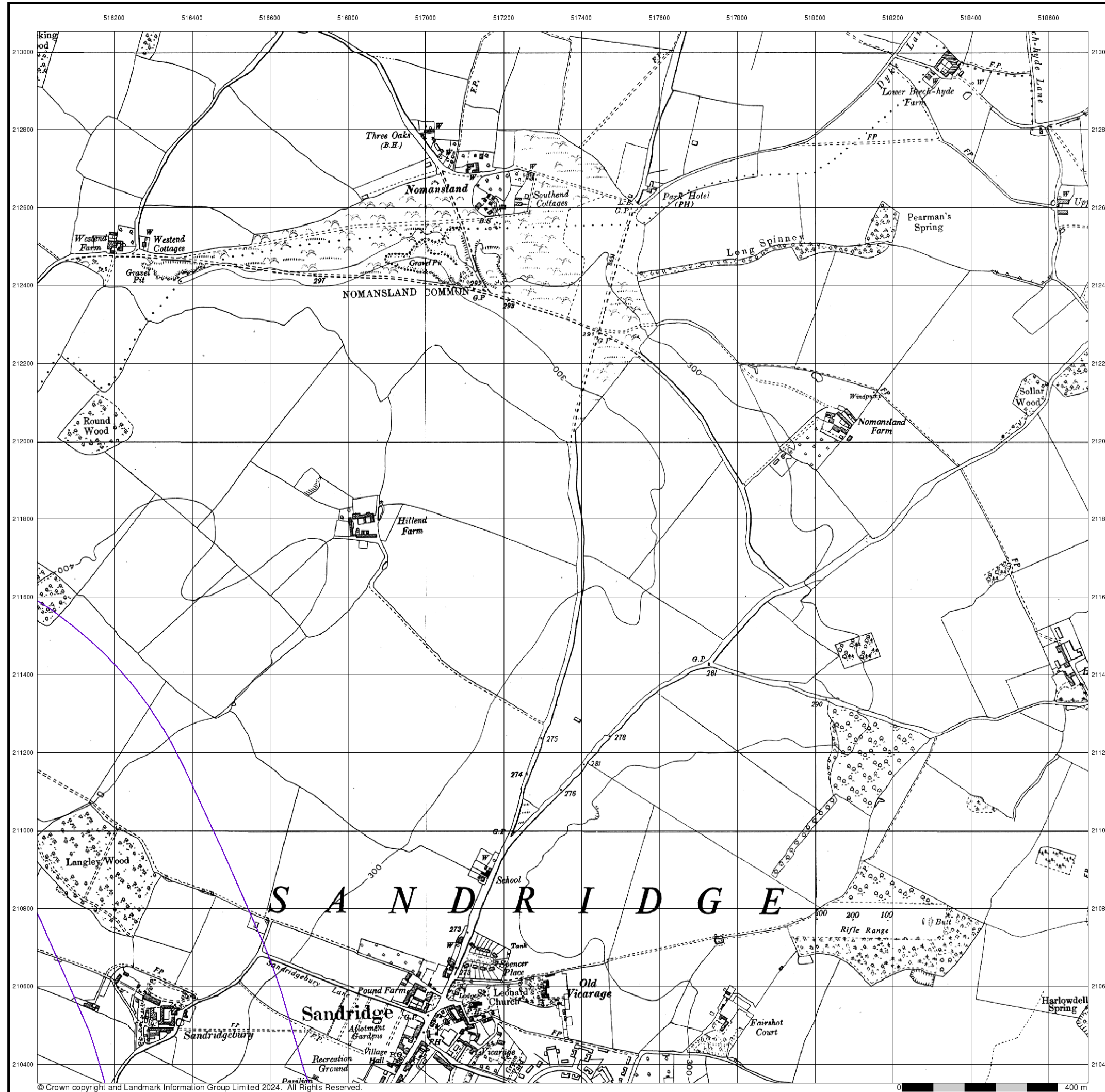
Order Details

Order Number: 345196291_1_1
 Customer Ref: PO01119
 National Grid Reference: 516260, 210820
 Slice: D
 Site Area (Ha): 51.71
 Search Buffer (m): 1000

Site Details

St Albans





Brookbanks Consulting

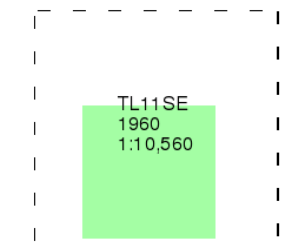
Ordnance Survey Plan

Published 1960

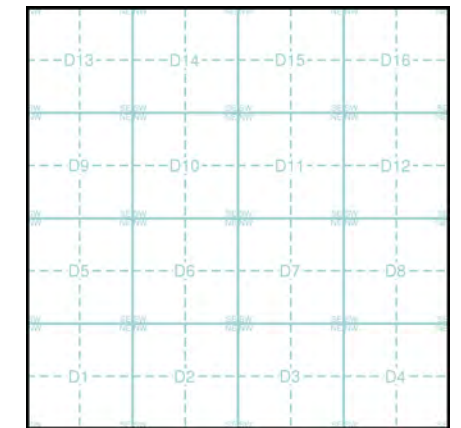
Source map scale - 1:10,000

The historical maps shown were reproduced from maps predominantly held at the scale adopted for England, Wales and Scotland in the 1840's. In 1854 the 1:2,500 scale was adopted for mapping urban areas; these maps were used to update the 1:10,560 maps. The published date given therefore is often some years later than the surveyed date. Before 1938, all OS maps were based on the Cassini Projection, with independent surveys of a single county or group of counties, giving rise to significant inaccuracies in outlying areas. In the late 1940's, a Provisional Edition was produced, which updated the 1:10,560 mapping from a number of sources. The maps appear unfinished - with all military camps and other strategic sites removed. These maps were initially overprinted with the National Grid. In 1970, the first 1:10,000 maps were produced using the Transverse Mercator Projection. The revision process continued until recently, with new editions appearing every 10 years or so for urban areas.

Map Name(s) and Date(s)



Historical Map - Slice D



Order Details

Order Number: 345196291_1_1
 Customer Ref: PO01119
 National Grid Reference: 516260, 210820
 Slice: D
 Site Area (Ha): 51.71
 Search Buffer (m): 1000

Site Details

St Albans

Landmark
 INFORMATION GROUP

Tel: 0844 844 9952
 Fax: 0844 844 9951
 Web: www.envirocheck.co.uk

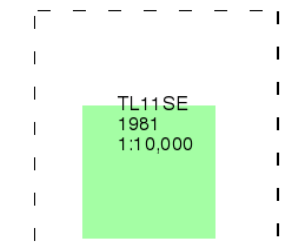
Ordnance Survey Plan

Published 1981

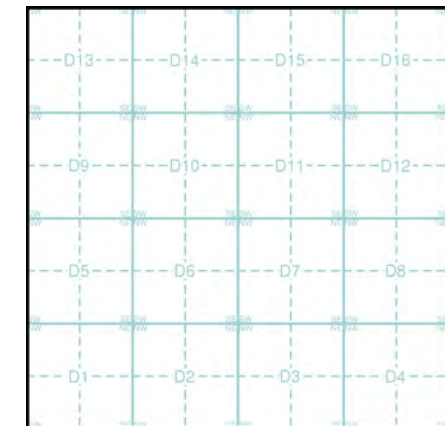
Source map scale - 1:10,000

The historical maps shown were reproduced from maps predominantly held at the scale adopted for England, Wales and Scotland in the 1840's. In 1854 the 1:2,500 scale was adopted for mapping urban areas; these maps were used to update the 1:10,560 maps. The published date given therefore is often some years later than the surveyed date. Before 1938, all OS maps were based on the Cassini Projection, with independent surveys of a single county or group of counties, giving rise to significant inaccuracies in outlying areas. In the late 1940's, a Provisional Edition was produced, which updated the 1:10,560 mapping from a number of sources. The maps appear unfinished - with all military camps and other strategic sites removed. These maps were initially overprinted with the National Grid. In 1970, the first 1:10,000 maps were produced using the Transverse Mercator Projection. The revision process continued until recently, with new editions appearing every 10 years or so for urban areas.

Map Name(s) and Date(s)



Historical Map - Slice D

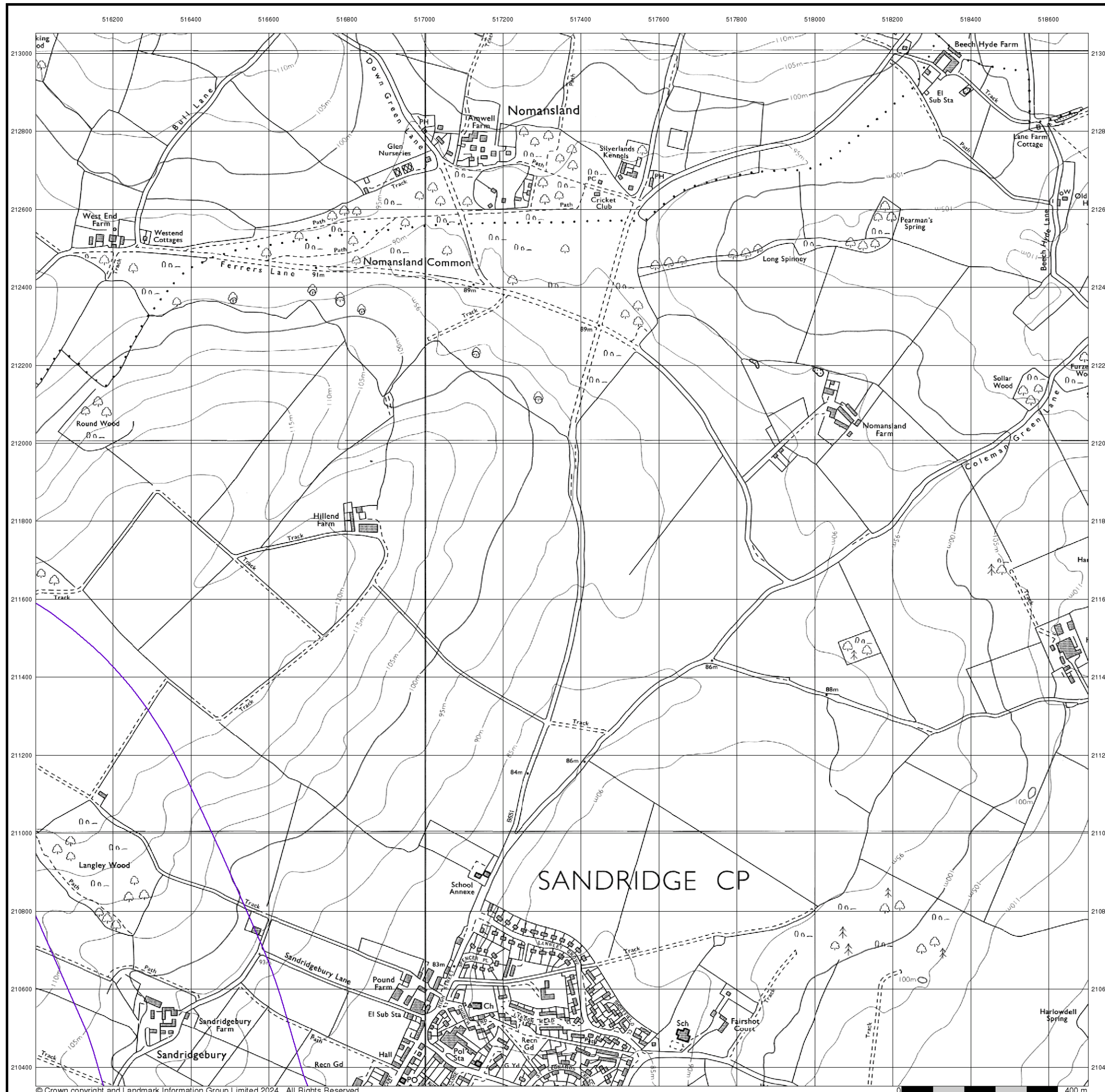


Order Details

Order Number: 345196291_1_1
 Customer Ref: PO01119
 National Grid Reference: 516260, 210820
 Slice: D
 Site Area (Ha): 51.71
 Search Buffer (m): 1000

Site Details

St Albans



Brookbanks Consulting

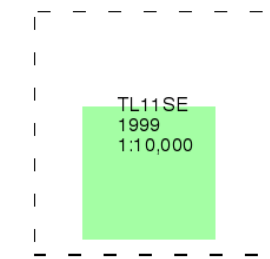
10k Raster Mapping

Published 1999

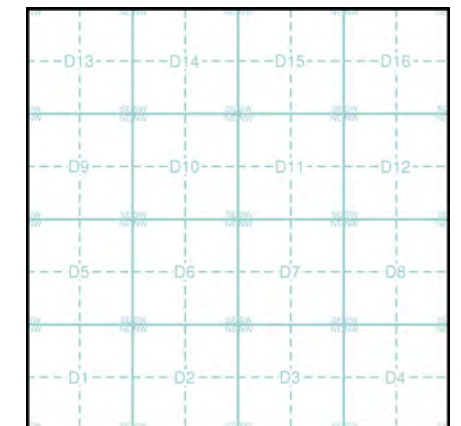
Source map scale - 1:10,000

The historical maps shown were produced from the Ordnance Survey's 1:10,000 colour raster mapping. These maps are derived from Landplan which replaced the old 1:10,000 maps originally published in 1970. The data is highly detailed showing buildings, fences and field boundaries as well as all roads, tracks and paths. Road names are also included together with the relevant road number and classification. Boundary information depiction includes county, unitary authority, district, civil parish and constituency.

Map Name(s) and Date(s)



Historical Map - Slice D



Order Details

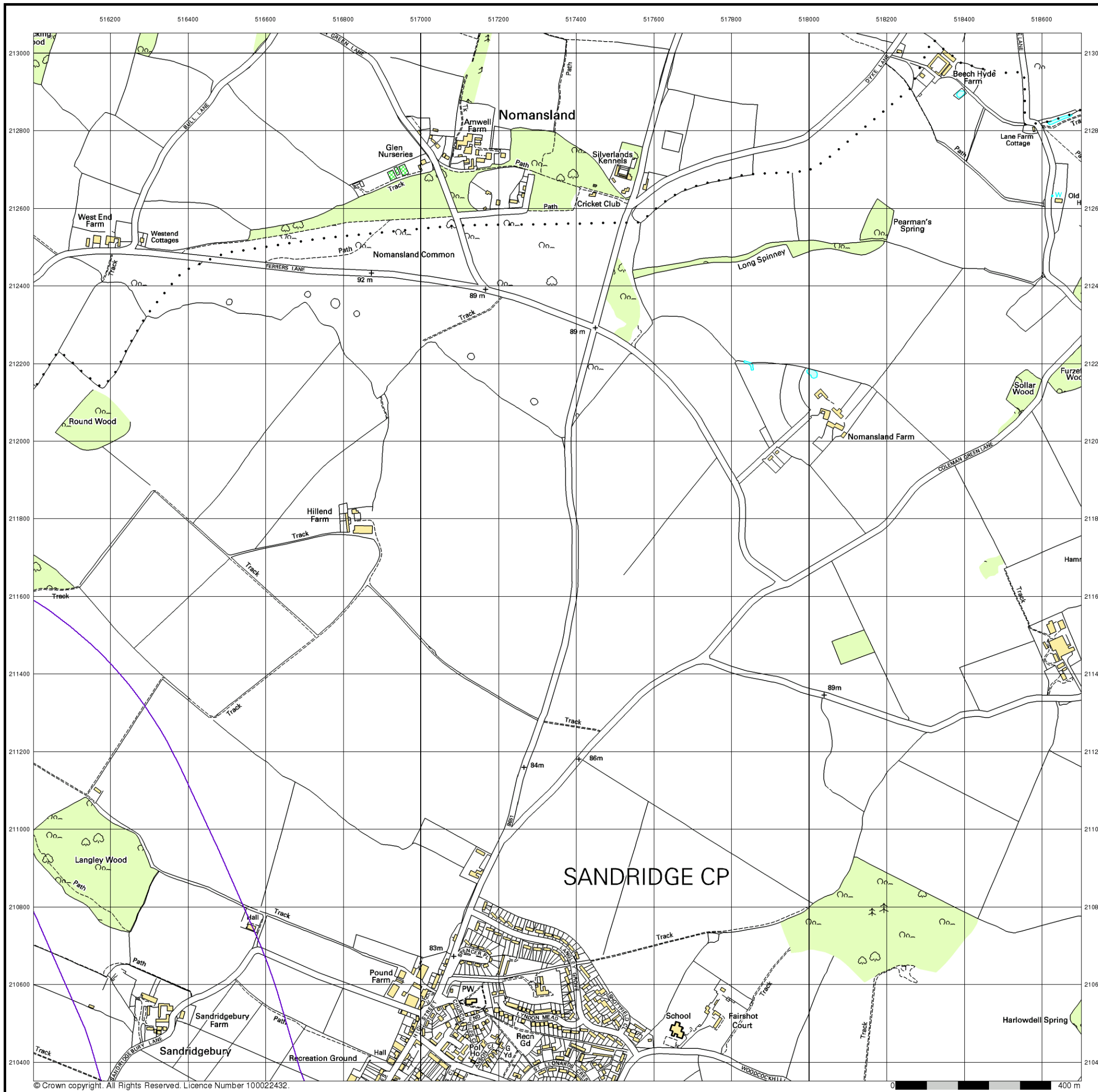
Order Number: 345196291_1_1
 Customer Ref: PO01119
 National Grid Reference: 516260, 210820
 Slice: D
 Site Area (Ha): 51.71
 Search Buffer (m): 1000

Site Details

St Albans

Landmark
 INFORMATION GROUP

Tel: 0844 844 9952
 Fax: 0844 844 9951
 Web: www.envirocheck.co.uk



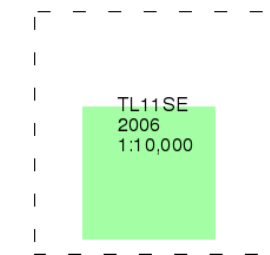
10k Raster Mapping

Published 2006

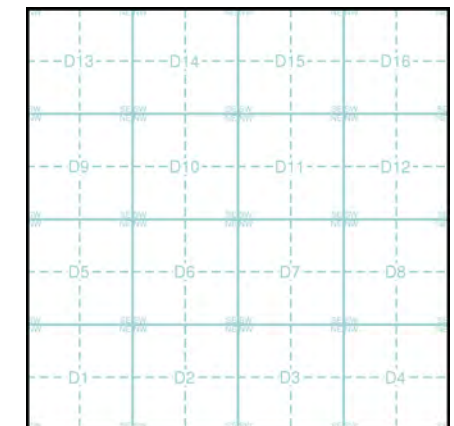
Source map scale - 1:10,000

The historical maps shown were produced from the Ordnance Survey's 1:10,000 colour raster mapping. These maps are derived from Landplan which replaced the old 1:10,000 maps originally published in 1970. The data is highly detailed showing buildings, fences and field boundaries as well as all roads, tracks and paths. Road names are also included together with the relevant road number and classification. Boundary information depiction includes county, unitary authority, district, civil parish and constituency.

Map Name(s) and Date(s)



Historical Map - Slice D

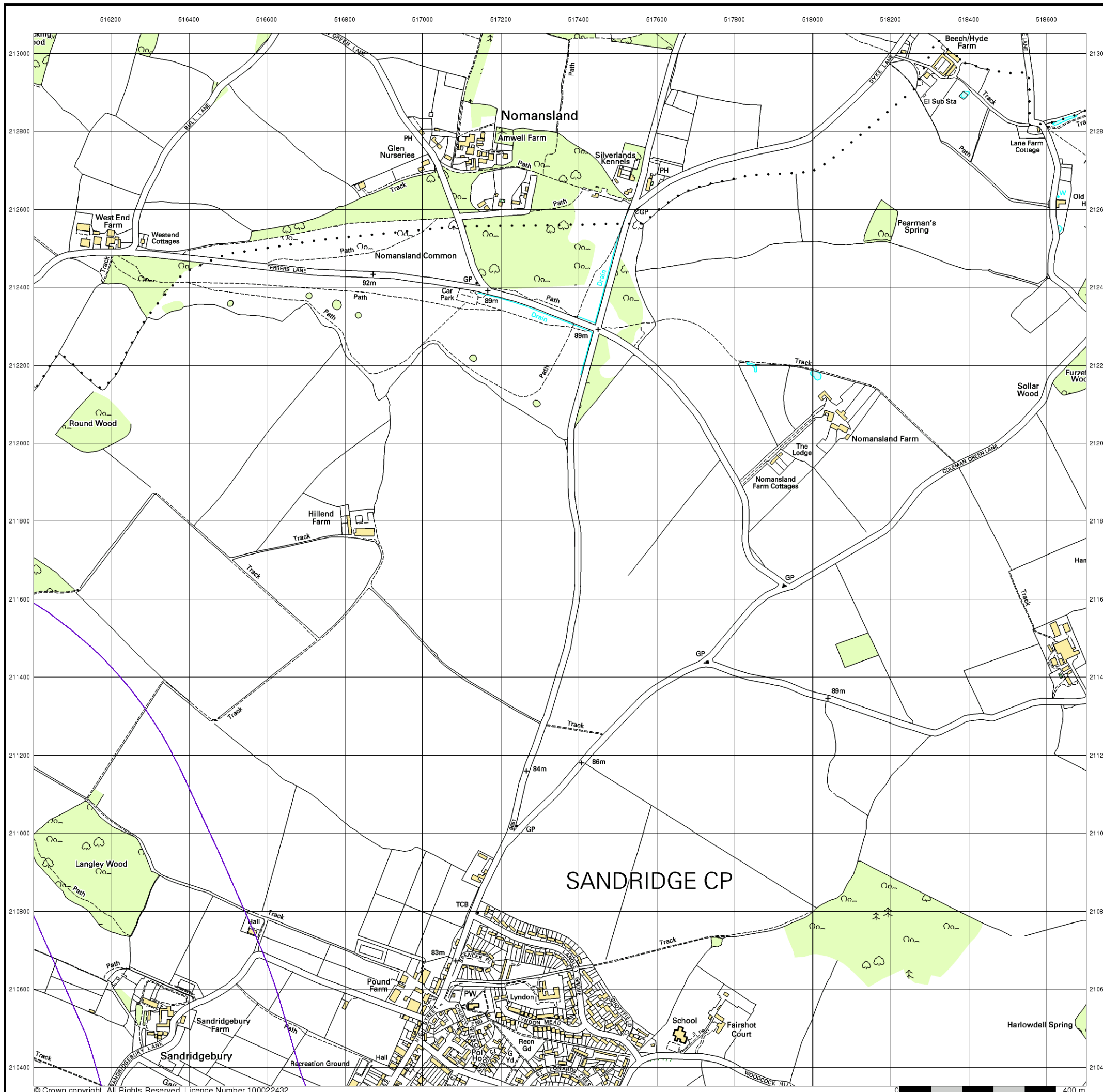


Order Details

Order Number: 345196291_1_1
 Customer Ref: PO01119
 National Grid Reference: 516260, 210820
 Slice: D
 Site Area (Ha): 51.71
 Search Buffer (m): 1000

Site Details

St Albans



© Crown copyright. All Rights Reserved. Licence Number 100022432.

Brookbanks Consulting

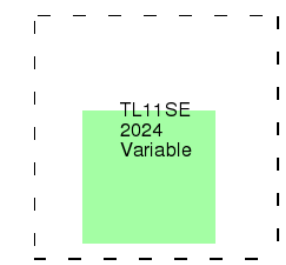
VectorMap Local

Published 2024

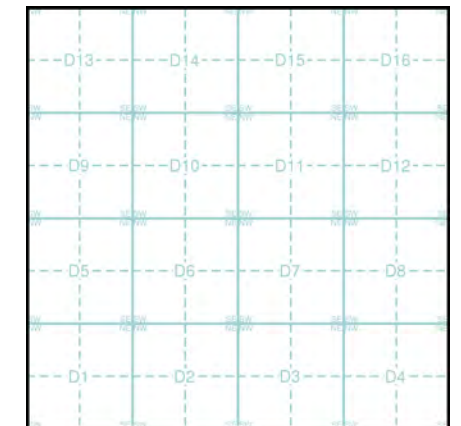
Source map scale - 1:10,000

VectorMap Local (Raster) is Ordnance Survey's highest detailed 'backdrop' mapping product. These maps are produced from OS's VectorMap Local, a simple vector dataset at a nominal scale of 1:10,000, covering the whole of Great Britain, that has been designed for creating graphical mapping. OS VectorMap Local is derived from large-scale information surveyed at 1:1250 scale (covering major towns and cities), 1:2500 scale (smaller towns, villages and developed rural areas), and 1:10 000 scale (mountain, moorland and river estuary areas).

Map Name(s) and Date(s)



Historical Map - Slice D



Order Details

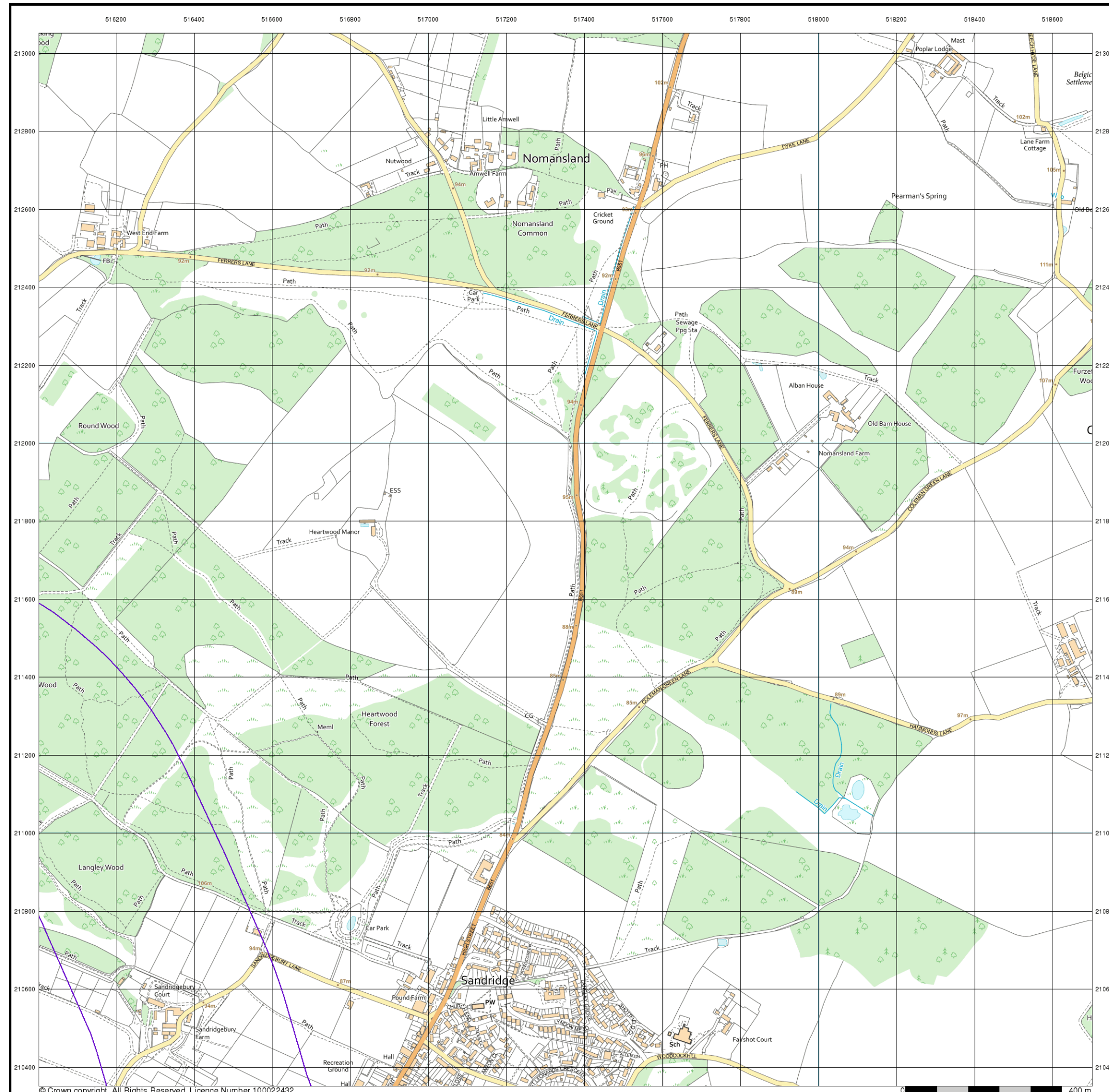
Order Number: 345196291_1_1
 Customer Ref: PO01119
 National Grid Reference: 516260, 210820
 Slice: D
 Site Area (Ha): 51.71
 Search Buffer (m): 1000

Site Details

St Albans



Tel: 0844 844 9952
 Fax: 0844 844 9951
 Web: www.envirocheck.co.uk



© Crown copyright. All Rights Reserved. Licence Number 100022432.





BROOKBANKS

Head Office Address

6150 Knights Court,
Solihull Parkway,
Birmingham Business Park,
Birmingham.
B37 7WY

T +44(0)121 329 4330

brookbanks.com