



Watering

- Maintenance team to adjust the watering levels in line with weather conditions accordingly, taking extra care in long dry spells to keep soil at required moisture level.
- Watering is a critical concern for not only the maintenance of healthy plant material but also for observing water conservation practices. The amount of water to apply at any one time varies with the weather, drainage conditions and water holding capacity of the soil. For plant materials that have been established, it is imperative that any mandated water restrictions be fully conformed to.
- Proper watering techniques should provide even and thorough water dispersal.
- Newly planted trees will have high demands for water in spring and summer and need to be kept under close review. All watering should be carried out in accordance with BS8545:2014 recommendations.
- Additional visits will be necessary if trees become drought stressed during prolonged periods of dry weather.
- All trees are to be watered to field capacity upon each maintenance visit.

Legend

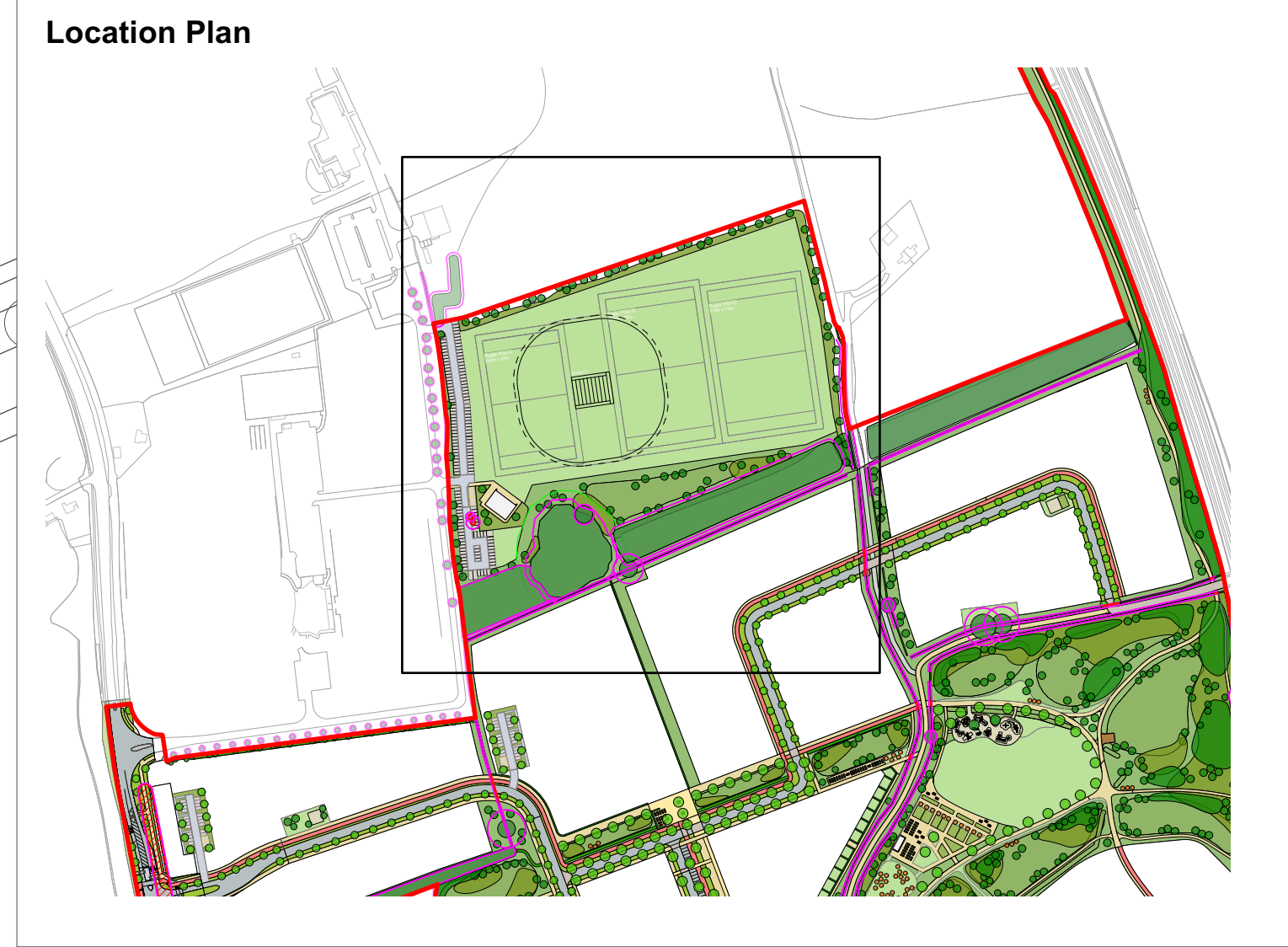
- Application Boundary
- Existing Trees**
 - Retained existing trees and hedgerows with root protection area; See FPCR drawing for further information on tree survey.
 - Existing trees to be removed
- Boundaries**
 - Security Boundary Fence; D mesh fence, circa 1.8m high, polyester powder coating (PPC) rigid metal fence
 - Timber Knee Rail; Treated timber 'birds-mouth' posts, with square horizontal fencing rail, secured galvanised straps, circa 1.0m high
 - 15m Buffer Badger Exclusion Zone
 - Proposed Attenuation Basin; See PJA drawing ref. 05920-A-0503 for further information on drainage strategy.
- Landscape**
 - Reinforced cellular mesh system, such as Groundtrax Cellpave (or similar approved product), overseeded with suitable hardwearing meadow seed mixture (~20% wildflower, ~80% grass) such as Wild Wales Seeds - Clover Lawn Mix; Planted at 4g/m² = 12,700 grams
 - Sports pitch grass seeding; to be constructed by specialist Sports England contractor to Sports England standards.
 - Amenity Grass Seeding; Suitable hardwearing amenity mixture such as Emorsgate EG22 'Wear tolerant turfgrass mixture' or similar approved; Planted at 25g/m² = 196,012 grams
 - Meadow Seeding Mix; such as Emorsgate EM1 'General Purpose Meadow Mixture' or similar approved; Planted at 4g/m² = 31,094 grams
 - Native shrub and tree matrix planting (2m spacing)
Understorey to be seeded with appropriate mixture such as Emorsgate EWI Woodland Mixture planted at 4g/m² = 8,728 grams

Plant Species	%	Height (cm)	Form	Density	Breaks	Quantity
Acer campestre	5%	175-200	Feathered	0.5m²	5+	54
Quercus robur	5%	175-200	Feathered	0.5m²	5+	54
Betula pendula	5%	175-200	Feathered	0.5m²	5+	54
Carpinus betulus	5%	175-200	Feathered	0.5m²	5+	54
Quercus robur	10%	60-80	Transplant	0.5m²	2	109
Betula pendula	10%	60-80	Transplant	0.5m²	2	109
Alnus glutinosa	5%	60-80	Transplant	0.5m²	2	55
Sorbus aucuparia	5%	60-80	Transplant	0.5m²	2	55
Ulex europaeus	5%	60-80	Transplant	0.5m²	2	55
Viburnum opulus	5%	60-80	Transplant	0.5m²	2	55
Prunus spinosa	5%	60-80	Transplant	0.5m²	2	55
Corylus avellana	10%	60-80	Transplant	0.5m²	2	109
Crataegus monogyna	15%	60-80	Transplant	0.5m²	2	164
Sambucus nigra	10%	60-80	Transplant	0.5m²	2	109

Native Scrub Planting
Understorey to be seeded with appropriate mixture such as Emorsgate EWI Woodland Mixture planted at 4g/m² = 16,912 grams

Plant Species	%	Height (cm)	Form	Density	Breaks	Quantity
Corylus avellana	15%	60-80	Transplant	0.5m²	2	315
Crataegus monogyna	50%	60-80	Transplant	0.5m²	2	1054
Viburnum opulus	5%	60-80	Transplant	0.5m²	2	107
Sambucus nigra	5%	60-80	Transplant	0.5m²	2	107
Ulex europaeus	5%	60-80	Transplant	0.5m²	2	107
Prunus spinosa	10%	60-80	Transplant	0.5m²	2	211
Ilex aquifolium	5%	60-80	Transplant	0.5m²	2	107
Ribes sanguineum	5%	60-80	Transplant	0.5m²	2	106

- Notes:**
- All transplants to be planted in random groups on a staggered grid at 2m centres.
 - All feathered specimens to be planted in random groups with individual species planted in random groups of 1-3 (minimum 4m apart).
 - Feathered specimens to be spaced evenly throughout the matrix planting area.
 - All transplants and feathered specimens to be fitted with a biodegradable spiral rabbit guard. Guard to leave no gaps between spirals and be wound around branches where applicable.



Native Hedge
Total linear metres = 392 m (6 per linear metre)

Plant Species	%	Height (cm)	Form	Breaks	Quantity
Crataegus monogyna	70%	70-100	Transplant	2	1645
Viburnum opulus	5%	70-100	Transplant	2	118
Ilex aquifolium	10%	70-100	Transplant	2	235
Cornus sanguinea	5%	70-100	Transplant	2	118
Corylus avellana	5%	70-100	Transplant	2	118
Acer campestre	5%	70-100	Transplant	2	118

- Notes:**
- Minimum 700mm whips; 3 year old transplants.
 - All transplants to be planted on a double staggered row at 300mm centres, 300mm apart.
 - To be planted with biodegradable spiral rabbit guards.

Native Specimen Tree Planting

Code	Tree Species	Height (m)	Girth (cm)	Standard	Root Type	Quantity
QueR	Quercus robur	3-4	10-12	2	R/B	10
CarB	Carpinus betulus	3-4	10-12	2	R/B	7
PruAv	Prunus avium	3-4	10-12	2	R/B	8
TiIE	Tilia europaea	3-4	10-12	2	R/B	4
SalA	Salix alba	3-4	10-12	2	R/B	3
SorA	Sorbus aucuparia	2-3	8-10	2	R/B	19
MalS	Malus sylvestris	2-3	8-10	2	R/B	11
AceC	Acer campestre	2-3	8-10	2	R/B	3
BetP	Betula pendula	2-3	8-10	2	R/B	11
AlnG	Alnus glutinosa	2-3	8-10	2	R/B	5