










PPC July 2017 – IDP Update

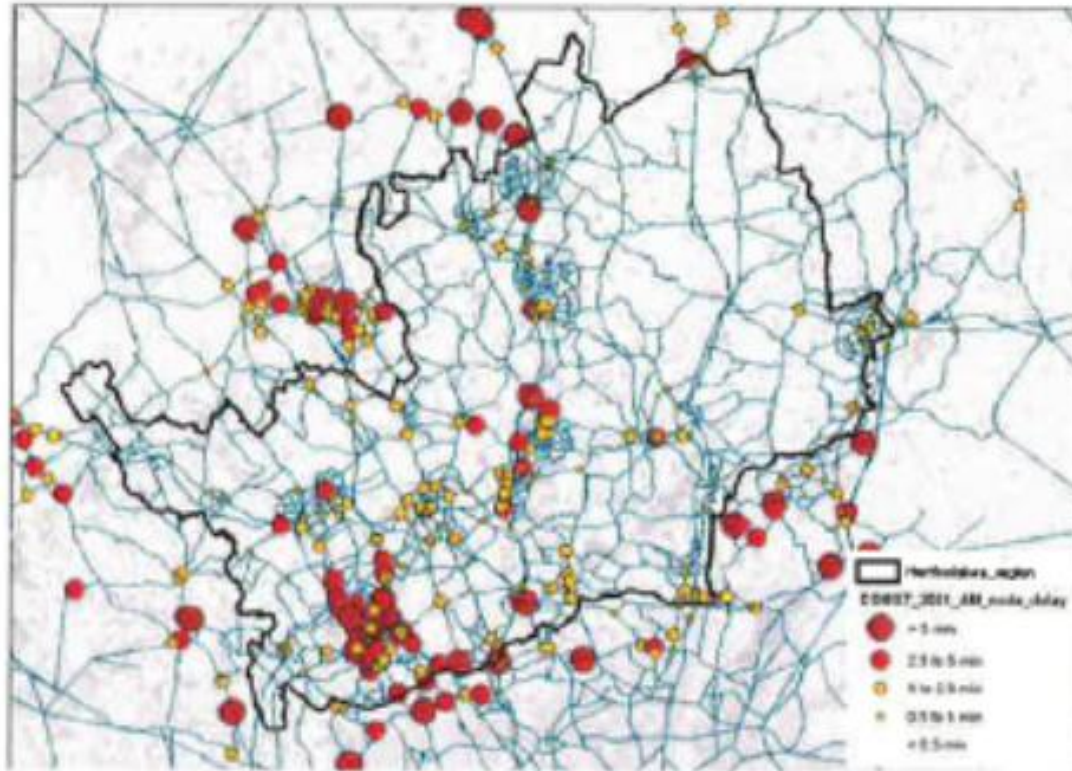
Infrastructure

-  [INFR.001 Infrastructure Delivery Plan 2016 \(PDF - 1 mb\)](#)
-  [INFR.002a Infrastructure Delivery Plan 2016 - Appendices part 1 \(PDF - 16 mb\)](#)
-  [INFR.002b Infrastructure Delivery Plan 2016 - Appendices part 2 \(PDF - 18 mb\)](#)
-  [INFR.002c Infrastructure Delivery Plan 2016 - Appendices part 3 \(PDF - 13 mb\)](#)
-  [INFR.002d Infrastructure Delivery Plan 2016 - Appendices part 4 \(PDF - 14 mb\)](#)
-  [INFR.002e Infrastructure Delivery Plan 2016 - Appendices part 5 \(PDF - 16 mb\)](#)
-  [INFR.002f Infrastructure Delivery Plan 2016 - Appendices part 6 \(PDF - 12 mb\)](#)
-  [INFR.002g Infrastructure Delivery Plan 2016 - Appendices part 7 \(PDF - 12 mb\)](#)
-  [INFR.002h Infrastructure Delivery Plan 2016 - Appendices part 8 \(PDF - 15 mb\)](#)

- Builds on existing IDP June 2016
- Updates - Transport, Education and Water
- IDP pulls together info from different infrastructure providers
- Iterative process
- IDP to be updated on an as necessary / regular basis to respond to new information, changes in circumstances and understanding

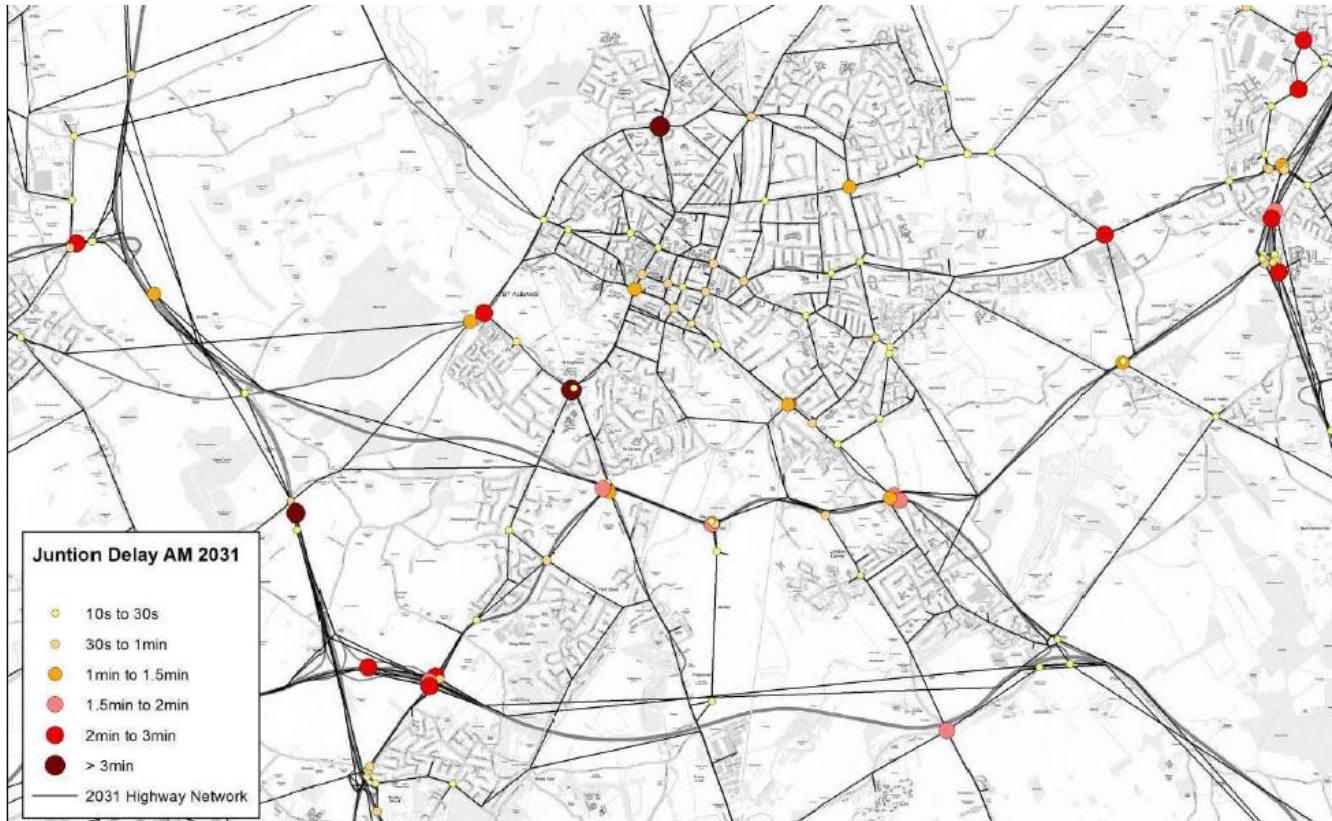
Transport: COMET

2031 COMET AM Junction Delay



- COMET model originally commissioned by HCC - designed to understand travel patterns and to predict future transport capacity/ constraints across the county – multi-modal
- Used to inform identification of high level transport infrastructure options
- COMET model relatively new - first run early 2016
- COMET model enhancement and calibration in St Albans District 2016-17
- Overall - results seen provide a sound evidence base from which to test the cumulative impact of Local Plan growth and provide a high level assessment of the mitigation schemes

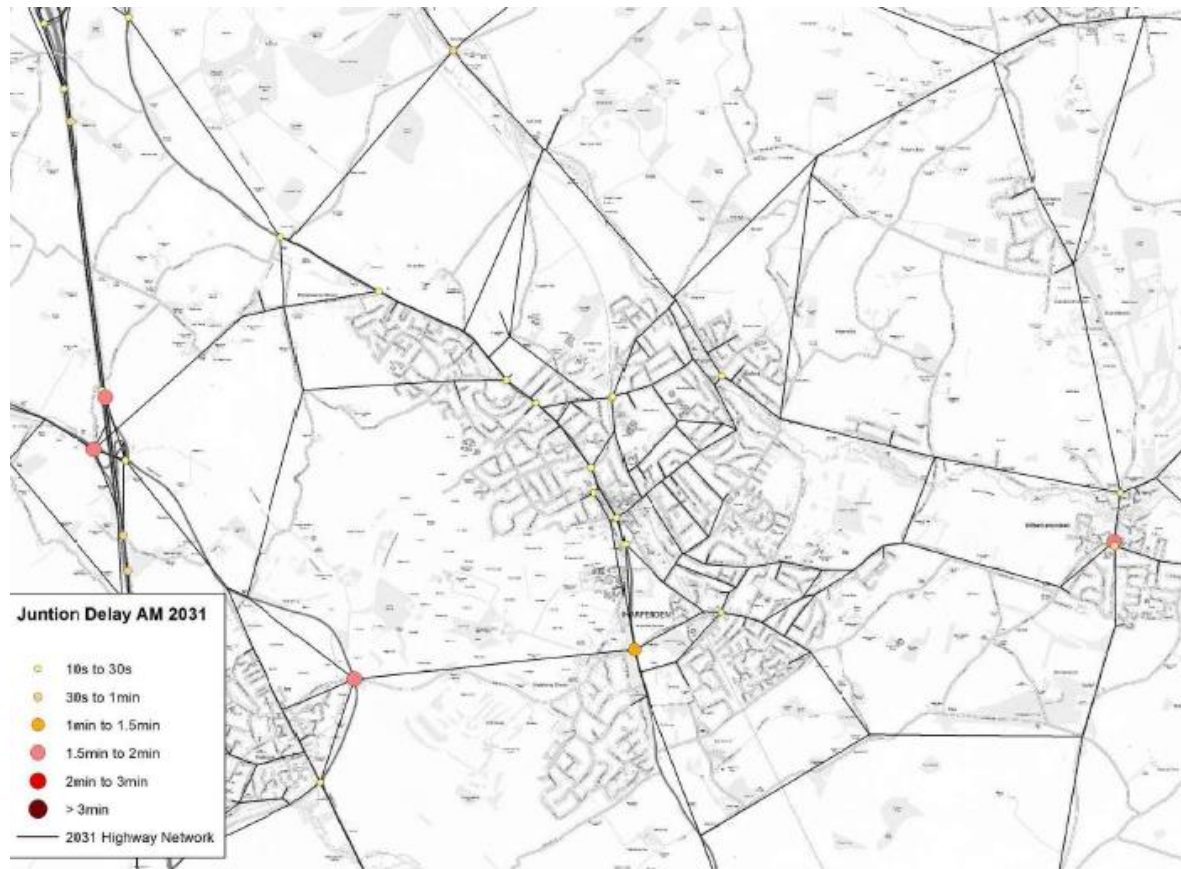
Transport: Task 4 St Albans



TASK 4

- St Albans Junction Delay AM Peak 2031 – Do Minimum (DM) scenario
- Summary – some increased delay at junctions and congestion expected on all routes into St Albans. Key delays on the “ring road” are impacting route choice and flows
- Summary - possible need to consider east-west movements into St Albans/Harpenden from Hemel and Redbourn
- Summary - impact of congestion on the A1M may induce rat running in eastern St Albans

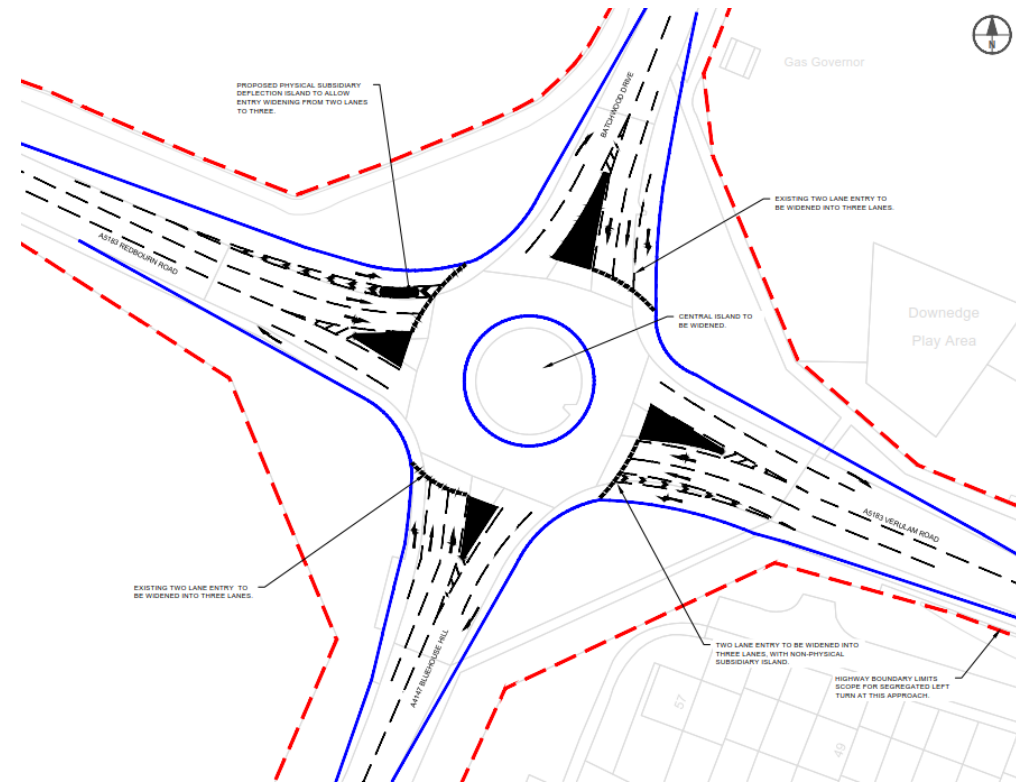
Transport: Task 4 Harpenden



TASK 4

- Harpenden Junction Delay AM Peak 2031 – Do Minimum (DM) scenario
- Summary - impacts in Harpenden not as large - but smaller delays start to occur at most junctions along A1081 Luton Road
- Summary - possible need to consider east-west movements into St Albans/Harpenden from Hemel and Redbourn
- Summary - congestion at the Wheathampstead Roundabout and links from Redbourn should be monitored

Transport: Task 5



Task 5 Proforma Locations:

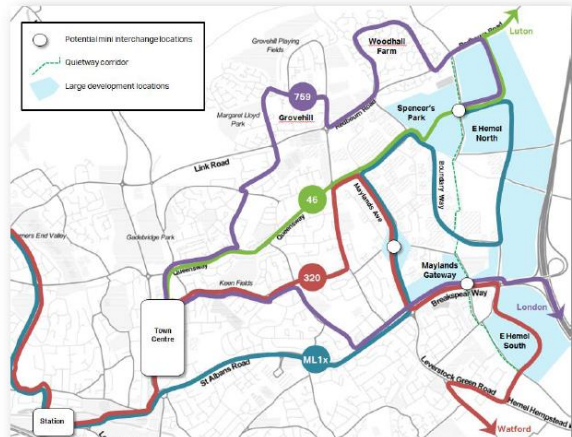
- A414/ A1081 Roundabout
- B651 St Albans Rd/ Sandridge Rd/ Marshalwick Lane/ Beech Road (King William Signals)
- A1081 Harpenden Rd/ Beech Rd/ Batchwood Dr (Ancient Briton)
- A5183 Redbourn Rd/ A4147 Bluehouse Hill/ Batchwood Drive Rbt
- B653 Cory Wright Way/ Marford Rd
- A4147 Hemel Hempstead Rd/ King Harry Lane
- A1081 Luton Rd/ Park Hill
- A1057 Hatfield Rd/ Station Rd

Task 6 ongoing (commissioning stage)

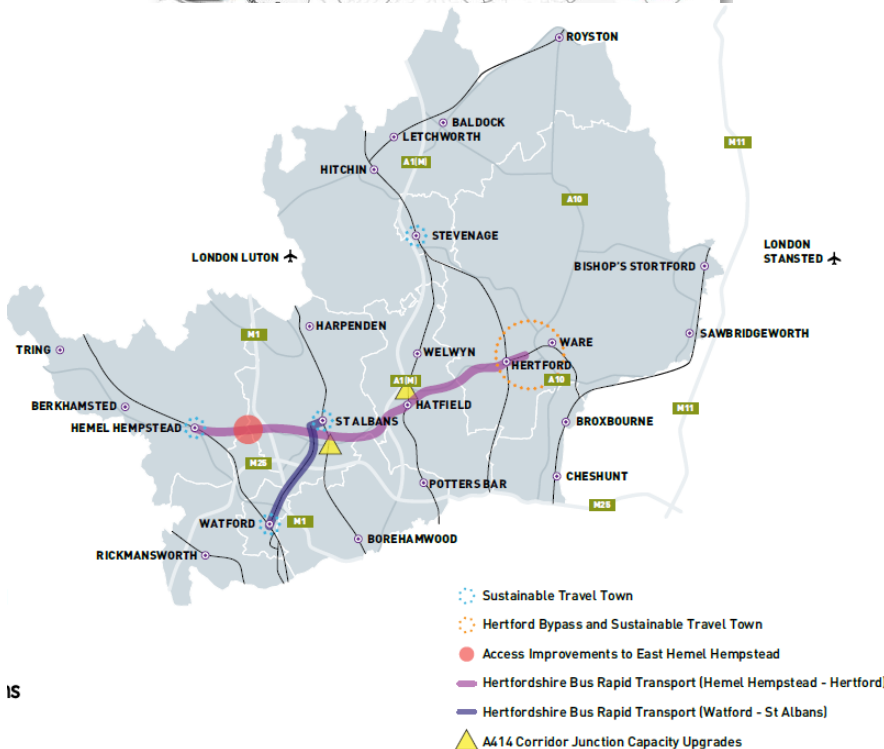
Transport: Other

Recommended Bus Option Package

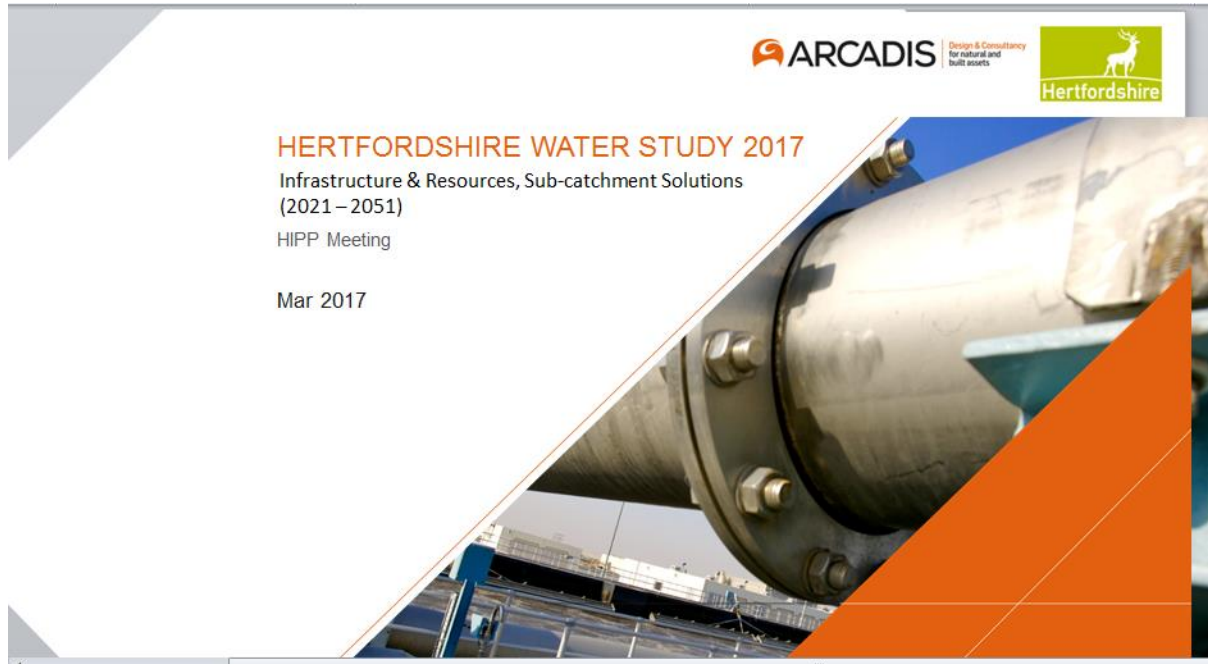
SC8a4 + SC8c + SC8d or SC8e + SC8f



- Maylands Growth Corridor Study - LEP led partnership work
- Landowner/Developer led work
- HCC led transport work including: Transport Vision 2050/LTP4; HCC Growth and Transport Plans



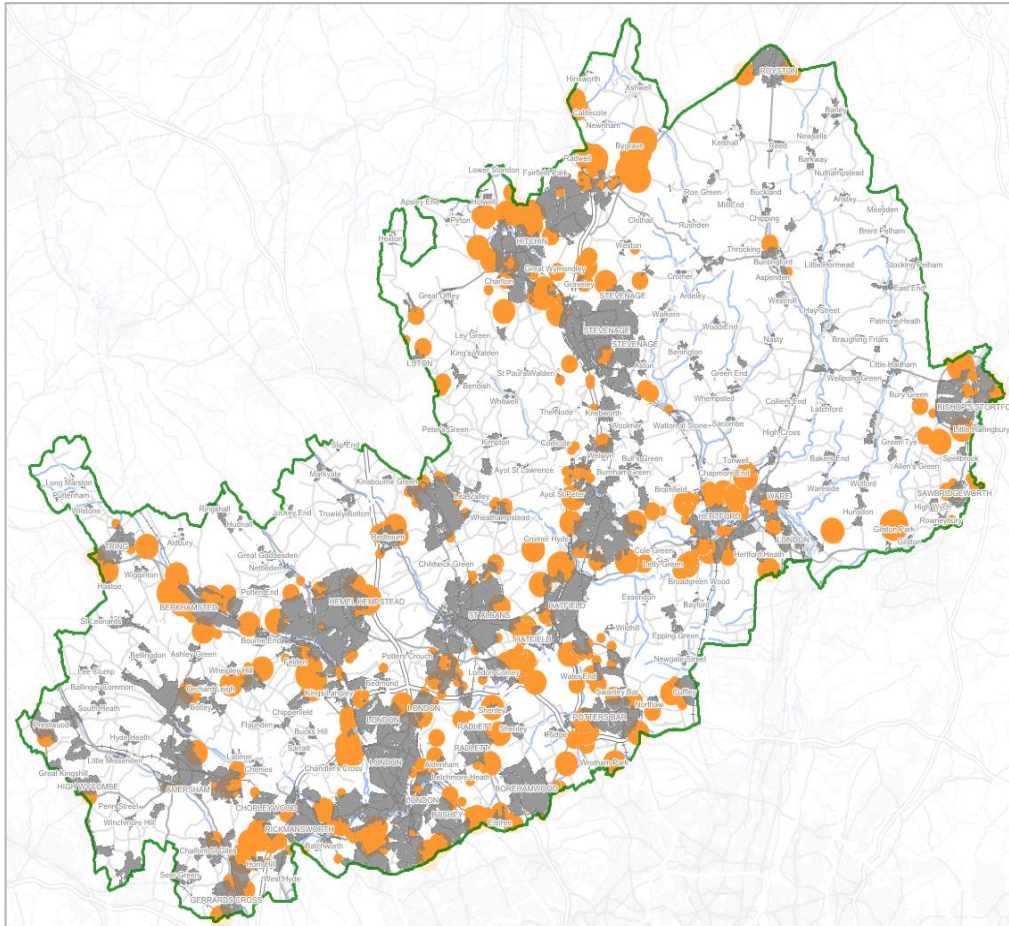
Water Study



- Partnership working with 16 agencies
- Work on Water Study reached advanced stage - but contents not yet signed off
- Hugely technical document - includes reference to commercially sensitive information - water assets and investment proposals

HIPP Report: “...the Study outcomes are of considerable value to the local plan process in that they show that, subject to appropriate future investment, no critical issues which would undermine local plan growth strategies have been uncovered, and that the fact that local authorities are taking a longer term holistic view of water infrastructure will earn them considerable credit at local plan examination.”

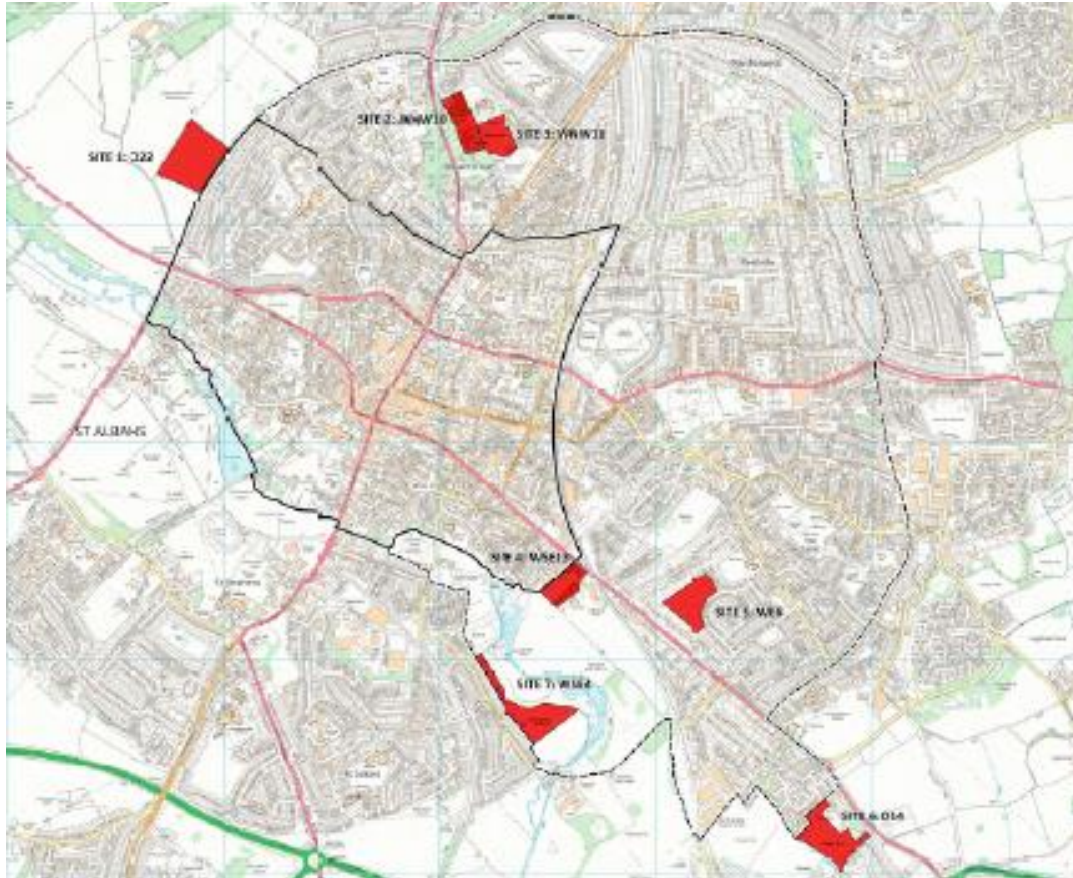
Water Study



Draft Conclusions

- Ensuring adequate **water infrastructure capacity is critical** to support the projected quantum of growth
- Indicative confirmation that **current growth strategies are broadly robust**
- Continued **partnership collaboration is necessary** to facilitate the development of robust long-term planning
- Remains **challenging linking long-term infrastructure planning with investment**
- **Current water management and efficiency policies broadly robust** and effective, specifically related to water supply

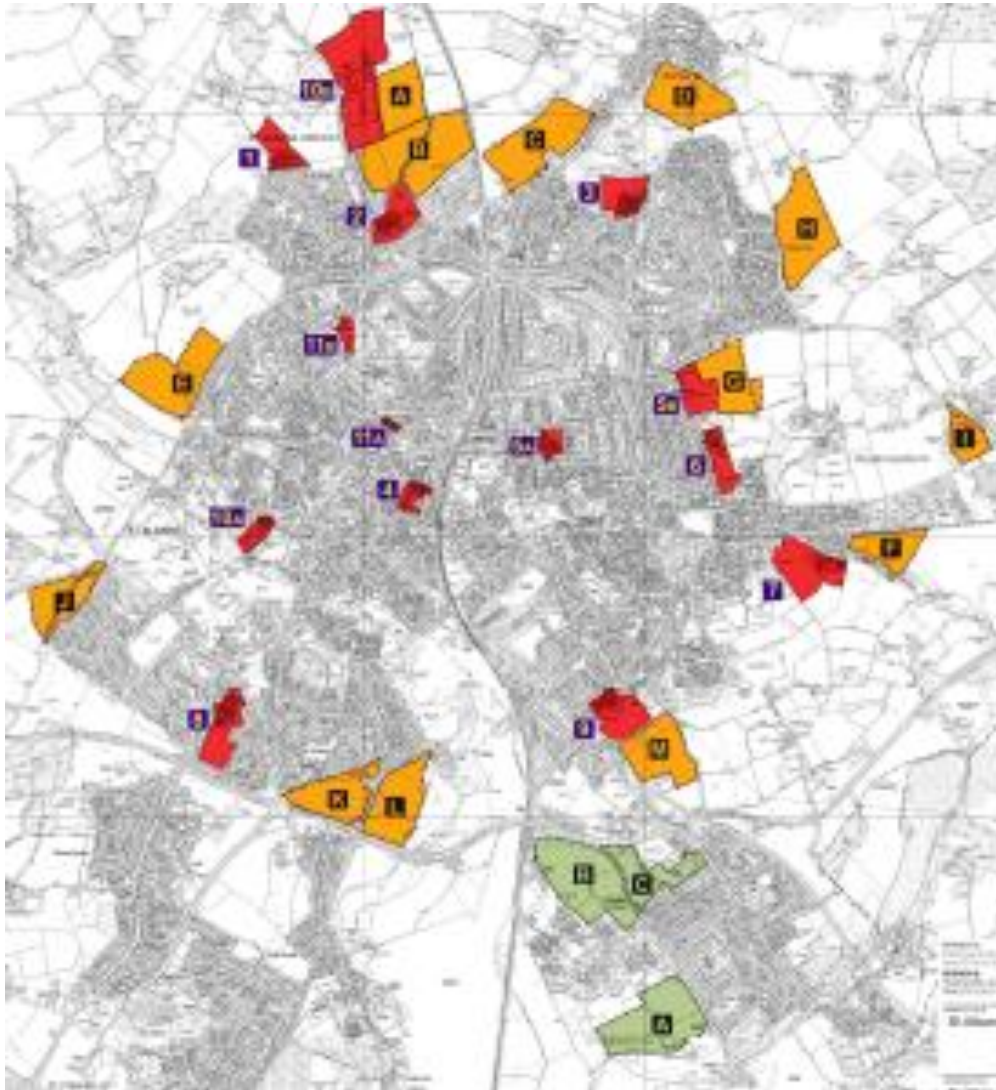
Education: St Albans Primary



St Albans Primary Schools:

- Need for school places – (HCC to provide further info)
- Capacity to expand existing schools (HCC to provide further info)
- ‘Hotspot’ – city centre/London Road corridor – live issue
- Options for new schools – HCC and SADC preferred option London Road
- Further work required to reach conclusions

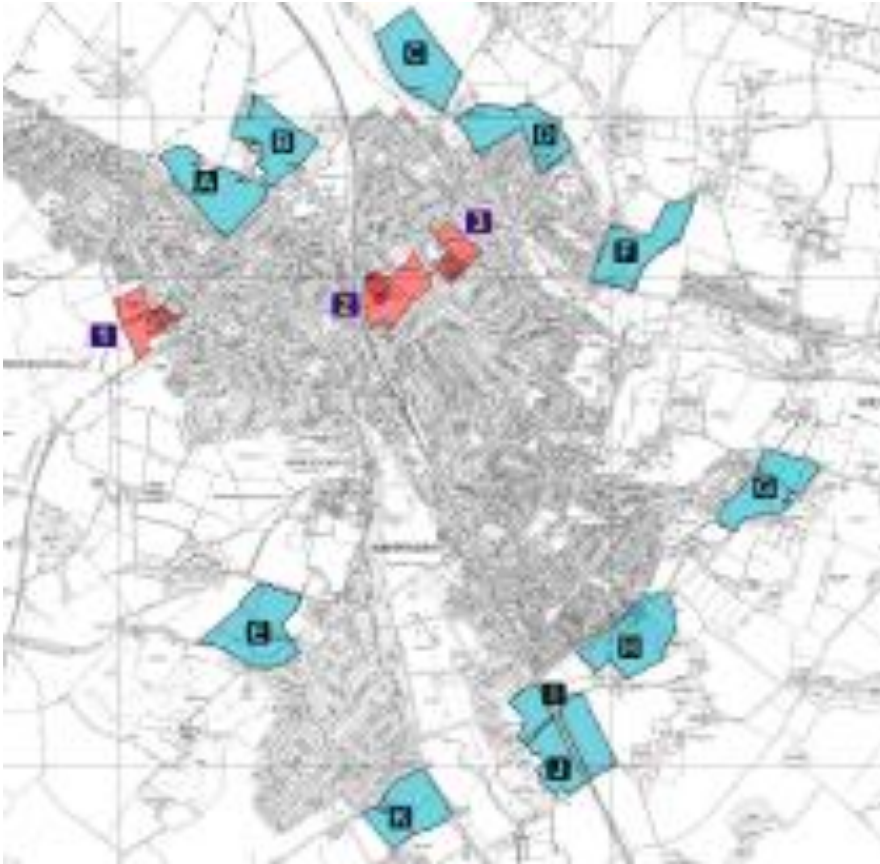
Education: St Albans Secondary



St Albans Secondary Schools:

- Need for school places towards end of Plan period (HCC to provide further info)
- Capacity to expand existing schools (HCC to provide further info)
- Options for new schools or reserve sites – HCC initial preferred = St Albans K,L; SADC initial preferred = London Colney A
- Further work required to reach conclusions

Education: Harpenden Secondary



- Katherine Warington School – 6FE
- Planning application to Hertfordshire County Planning Authority - September 2017
- Four HCC public exhibitions :
 - Monday 10th July 2017
Aldwickbury Park Golf Club
 - Thursday 13th July 2017 at
Batford Memorial Hall
 - Wednesday 19th July 2017
Wheathampstead Memorial Hall
 - Thursday 20th July 2017
Redbourn Village Hall



Conclusions



- Work on Transport, Water and Education aspects of the IDP is ongoing
- Good progress being made
- Stakeholder partnership working - challenges - but overall assists in developing shared vision, investment priorities & funding bids
- Much of work affects geographic locations wider than district boundary - implications for / assists with DtC