

# Maylands Growth Corridor Study

Progress Meeting 10: 14<sup>th</sup> September 2016

Page 193

September 2016

**AECOM**

Agenda Item 9vi

# Agenda

1/ Introductions

2/ Recap – what we have done to date

3/ Scheme Concept 8 – bus service options

4/ Scheme Concept 1 – M1 J8 scheme design

5/ Paramics Model Enhancement Update

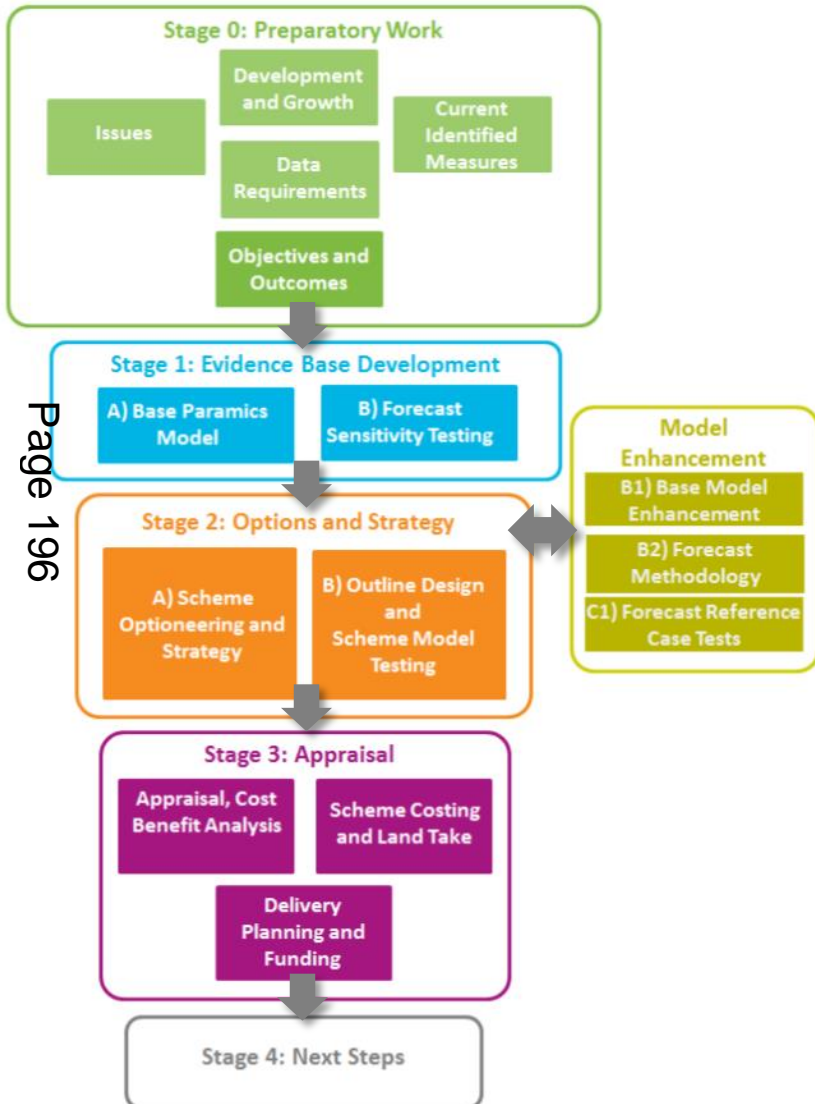
6/ What next

7/ AOB

# 2/ Work to date

Page 195

# Commission Overview



April '15-July '15

a) Aug '15 – Nov '15

b) Dec '15 – Jan '16

B1) March-July '16

B2) July-Aug '16

B3) Aug-Sept '16

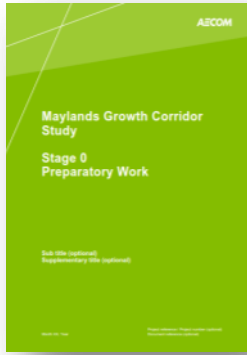
a) Sept '15-Nov '15

b) Jan '16 - Oct '16

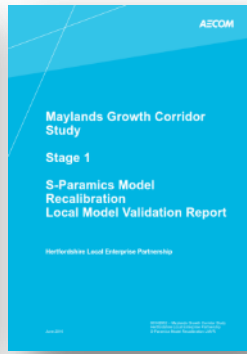
Oct-Nov 2016

tbc

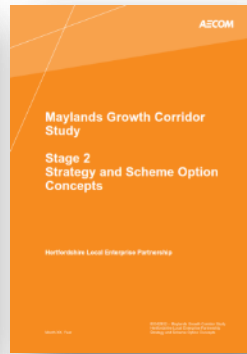
# Documents produced so far



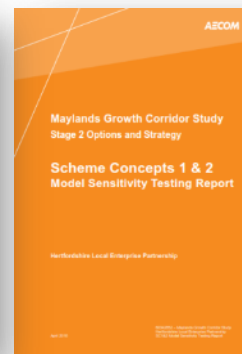
**Stage 0**  
Preparatory  
Work  
(April 15)



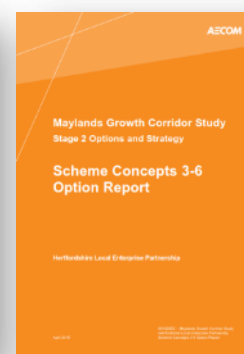
**Stage 1**  
Model Update  
LMVR  
(Nov 15/Jun 16)



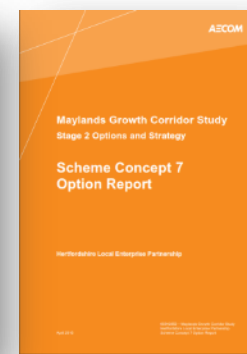
**Stage 2**  
Strategy and  
Scheme  
Concept  
Options Report  
(Sept 15)



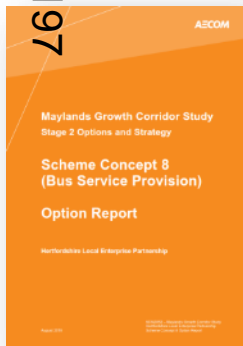
**Stage 2**  
SC1&2 Model  
Sensitivity  
Testing Report  
(April 16)



**Stage 2**  
SC3-6 Options  
Report  
(April 16)



**Stage 2**  
SC7 Lorry  
Parking &  
Routing Options  
Report  
(April 16)



**Stage 2**  
SC8 Bus Services  
& Routing Options  
Report  
(August 16)

# 3/ Scheme Concept 8

Page 198

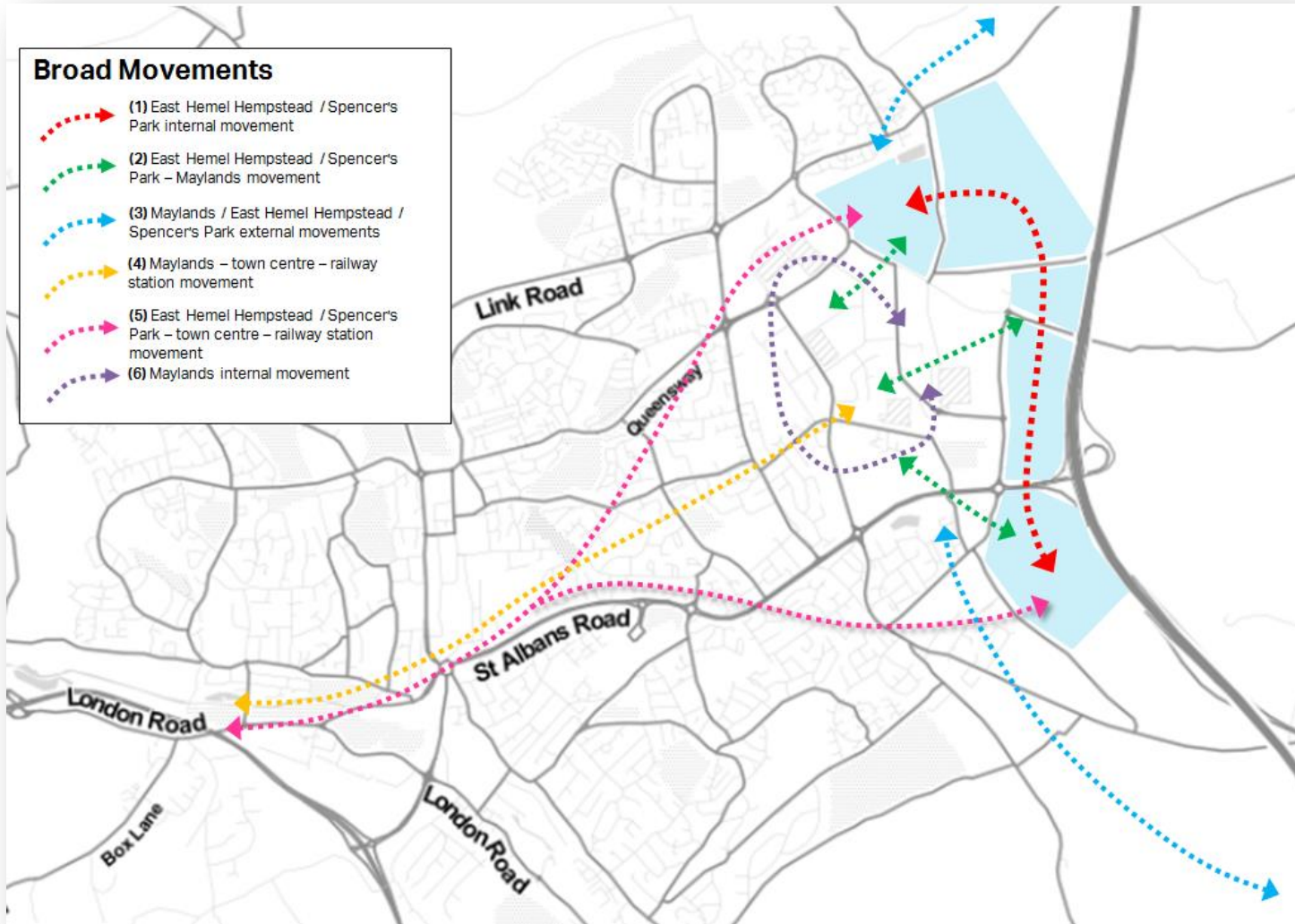
# Bus Options

# Key priorities

- Assess the scope of bus service provision – the likely demand
  - Identify the options for linking East Hemel Hempstead & Spencers Park developments with the town centre and railway station by bus consider options which build upon ML1 as well as others which may involve entirely new routes
  - Opportunities to improve bus links to Maylands from areas outside of Hemel Hempstead (whilst enhancing links between large developments, the town centre and Maylands
- Page 199 The approach has focused on options which wouldn't require any major infrastructure interventions i.e. building upon the existing bus business offer in Hemel Hempstead.
- Does not consider bus service requirements and opportunities to cater for wider-scale development across Hemel Hempstead and beyond.

# Defining broad movements to shape bus service options

Page 200

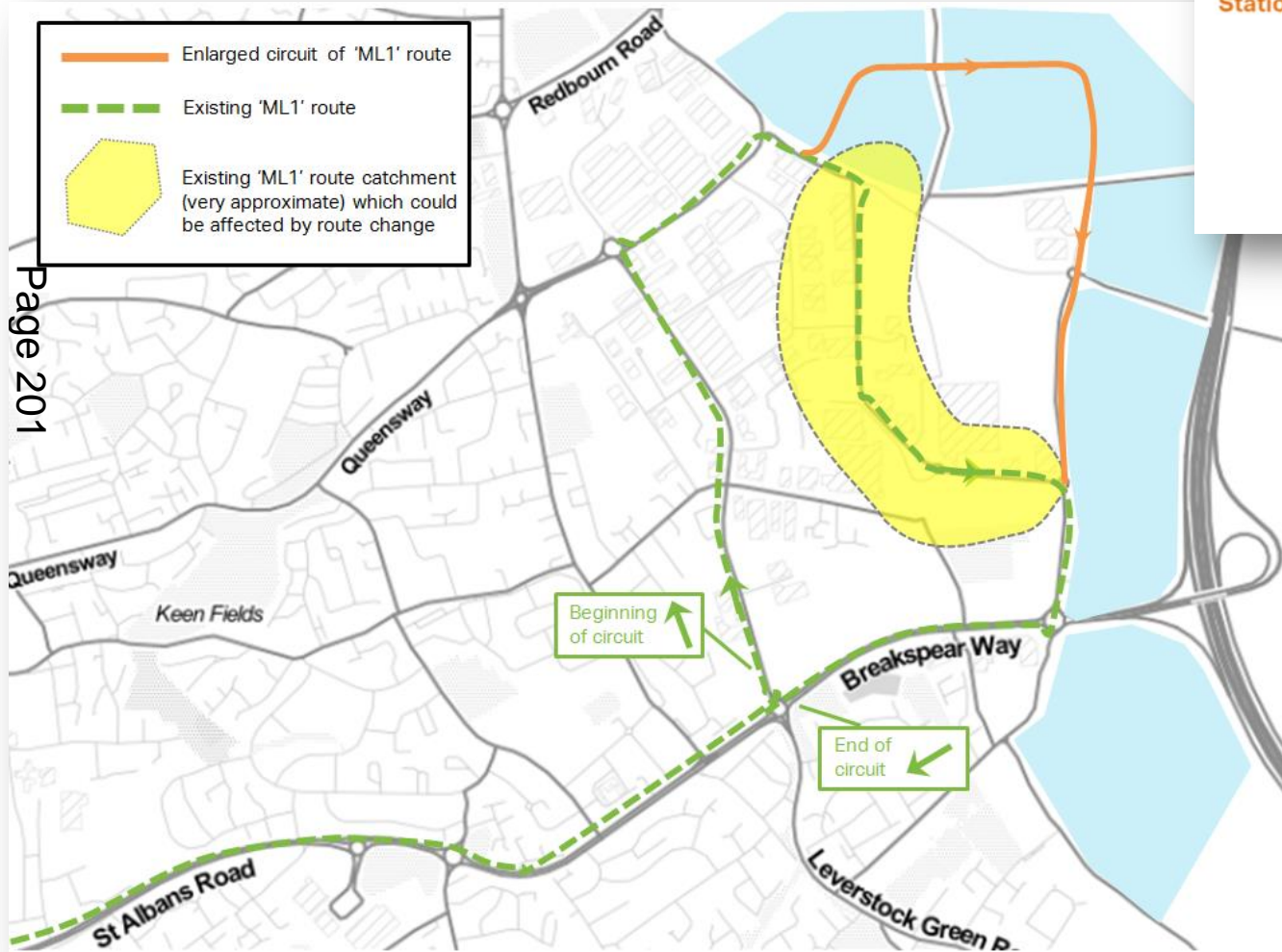




# Options

## SC8a – Enhancement of Arriva ML1

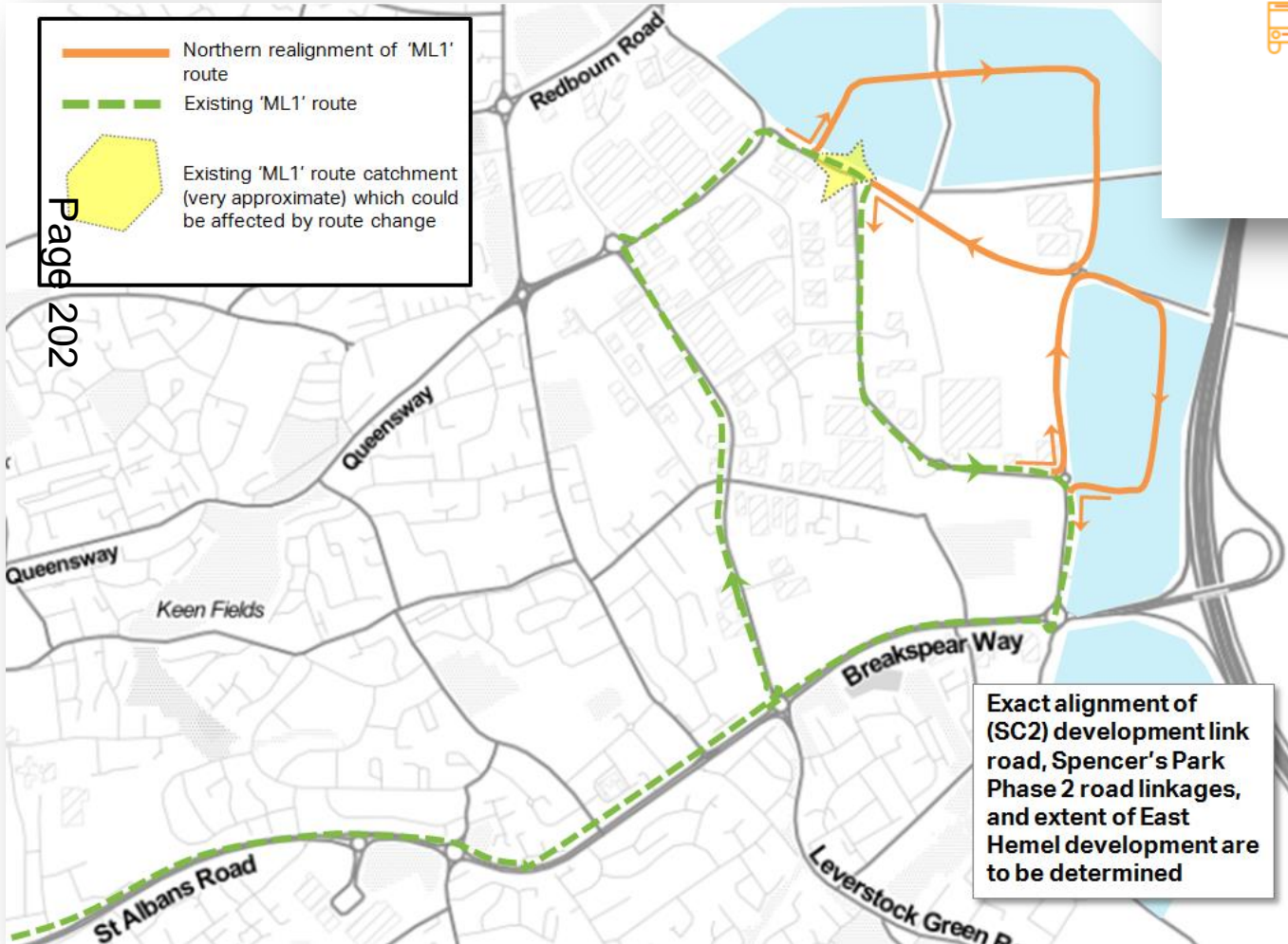
### SC8a1 Enlargement of ML1 circuit



# Options

## SC8a – Enhancement of Arriva ML1

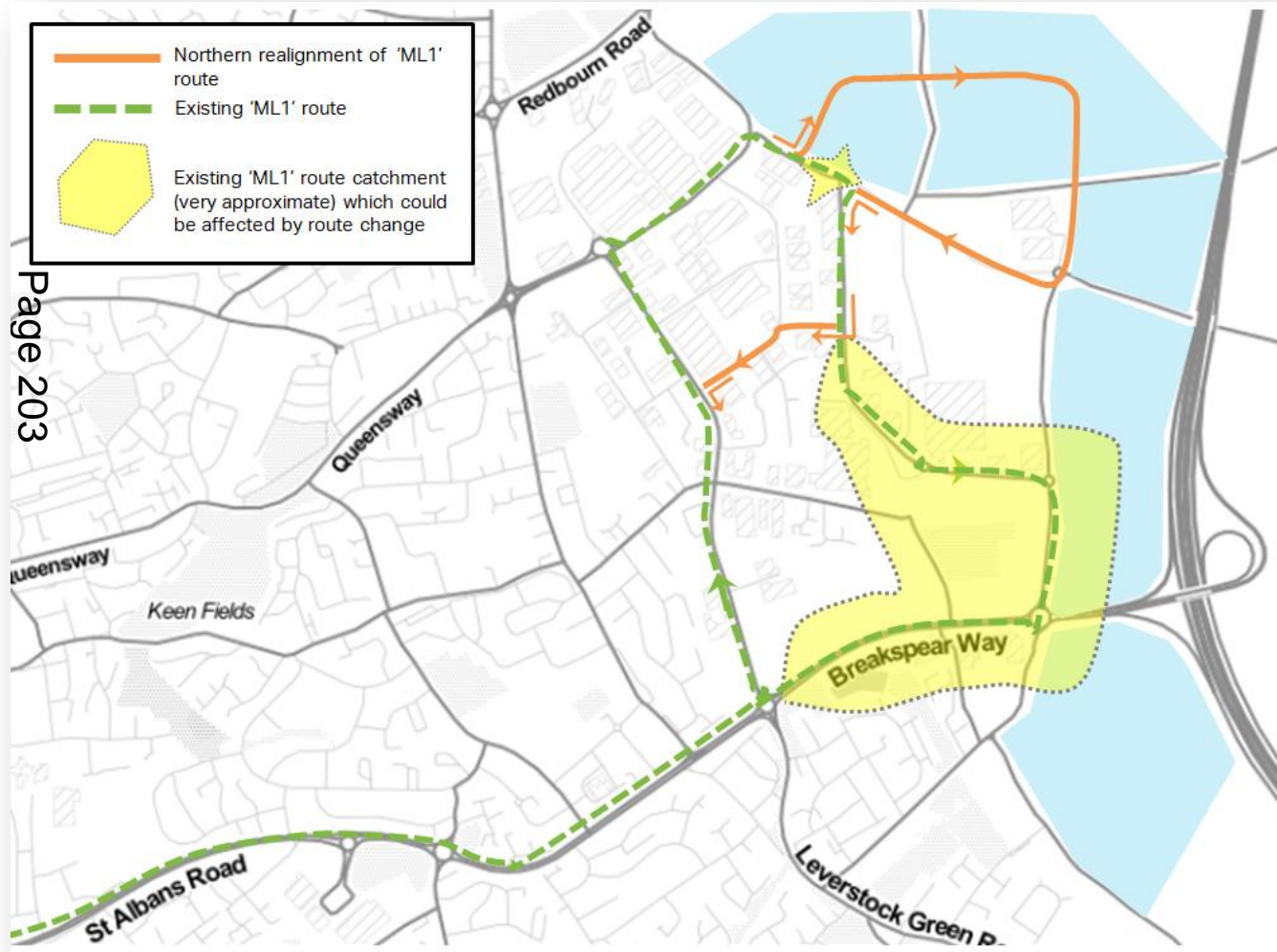
### SC8a2 New ML1 circuit route



# Options

## SC8a – Enhancement of Arriva ML1

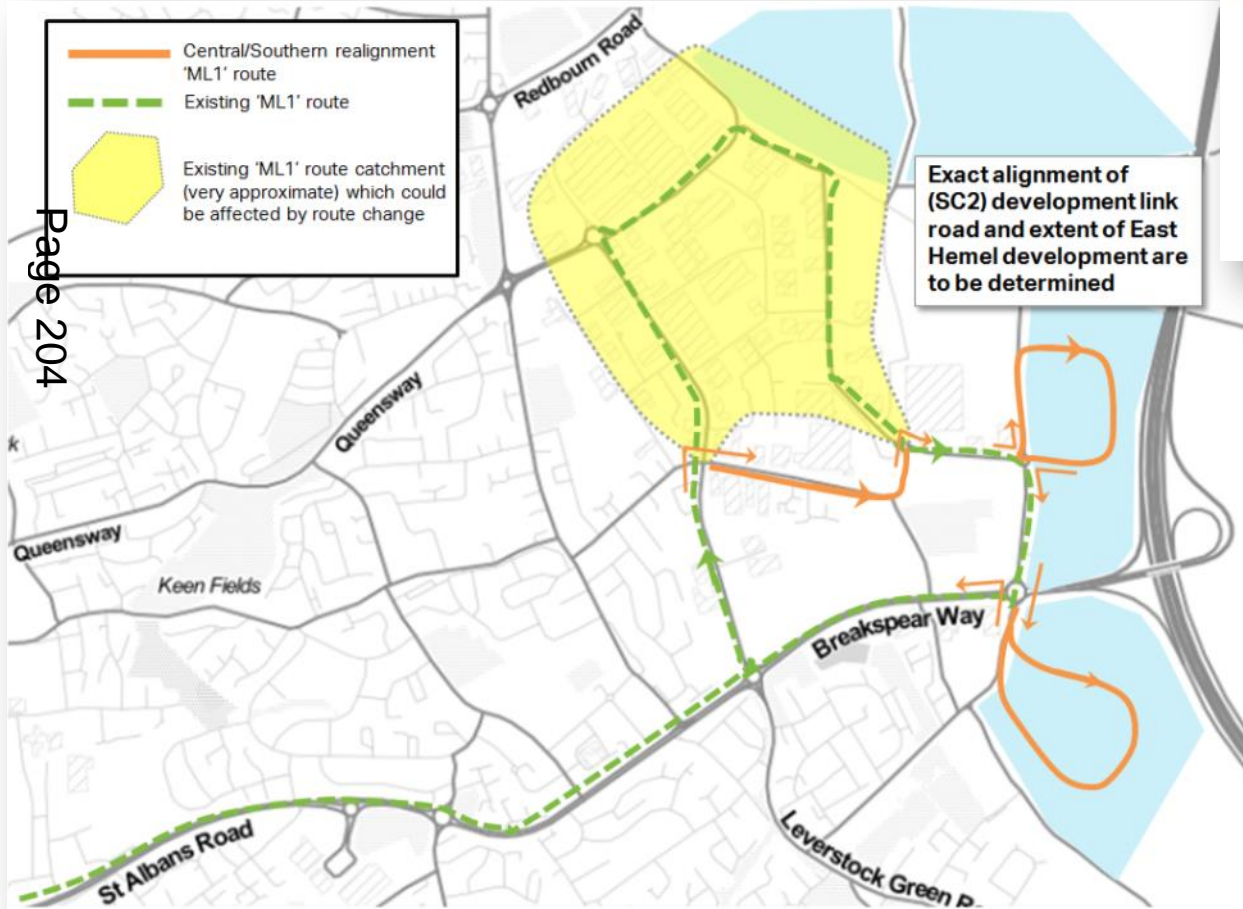
### SC8a3 New ML1 North and ML2 South routes



# Options

## SC8a – Enhancement of Arriva ML1

### SC8a3 New ML1 North and ML2 South routes

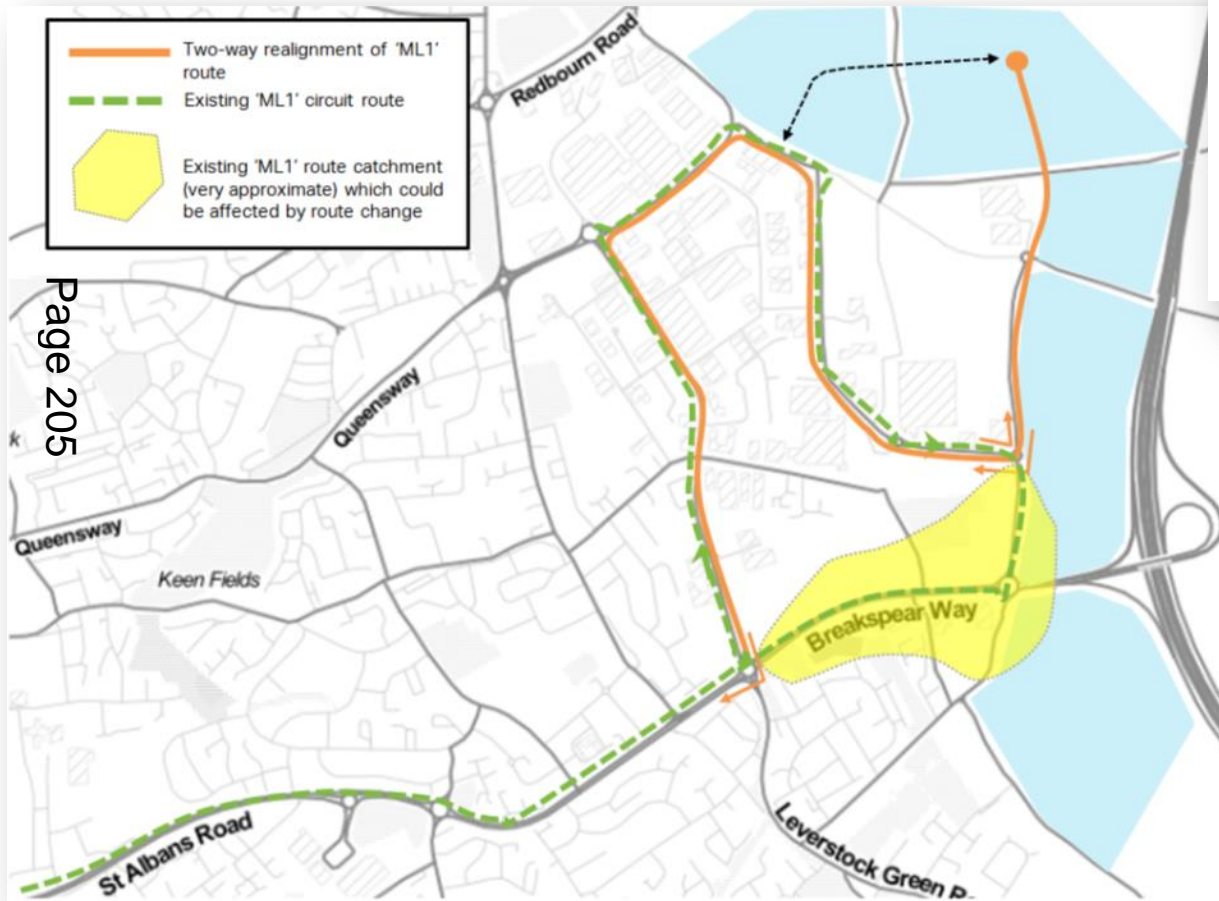


Page 204

# Options

## SC8a – Enhancement of Arriva ML1

### SC8a4 ML1 2-way linear route + extension

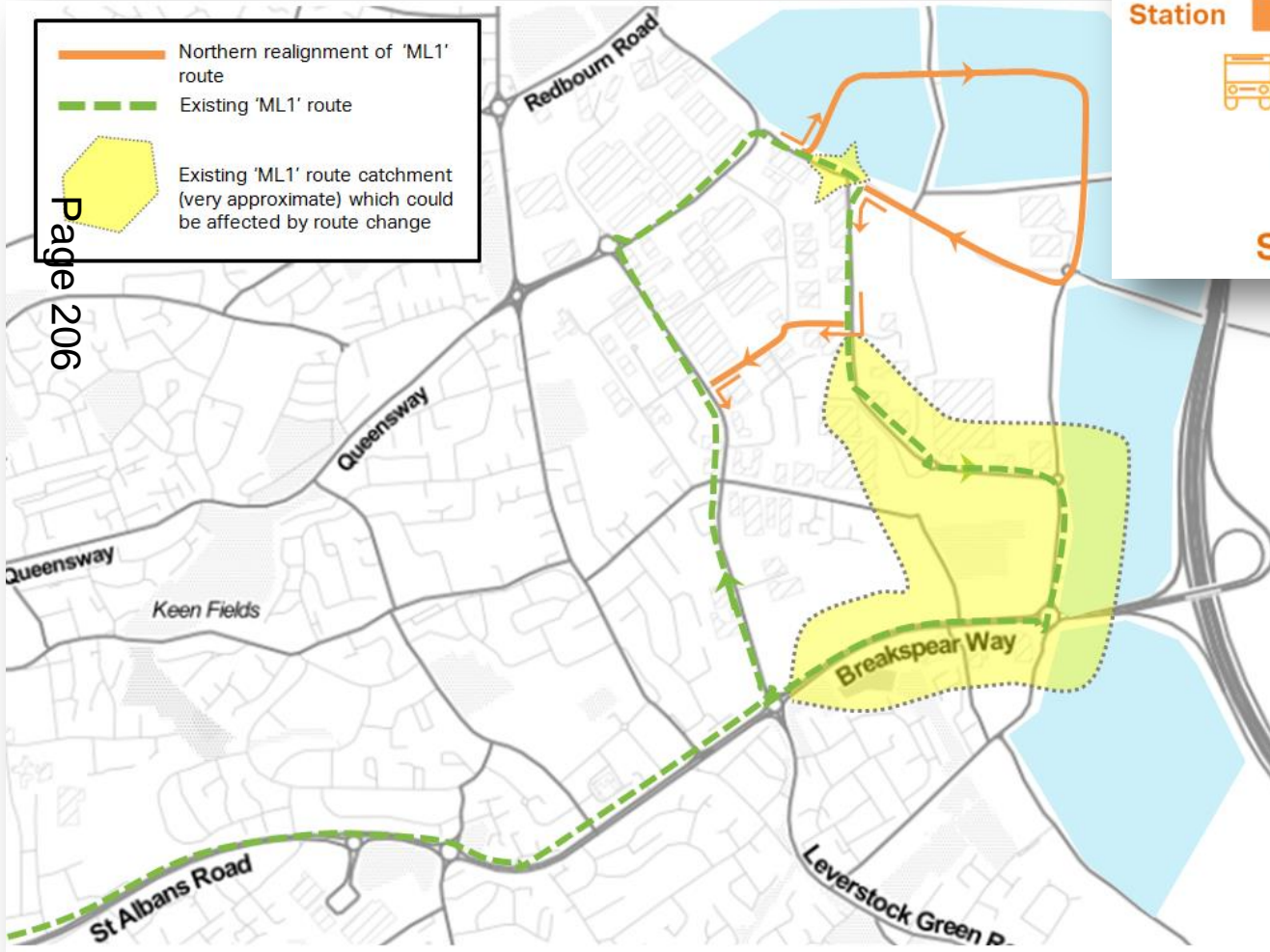


Page 205

# Options

## SC8a – Enhancement of Arriva ML1

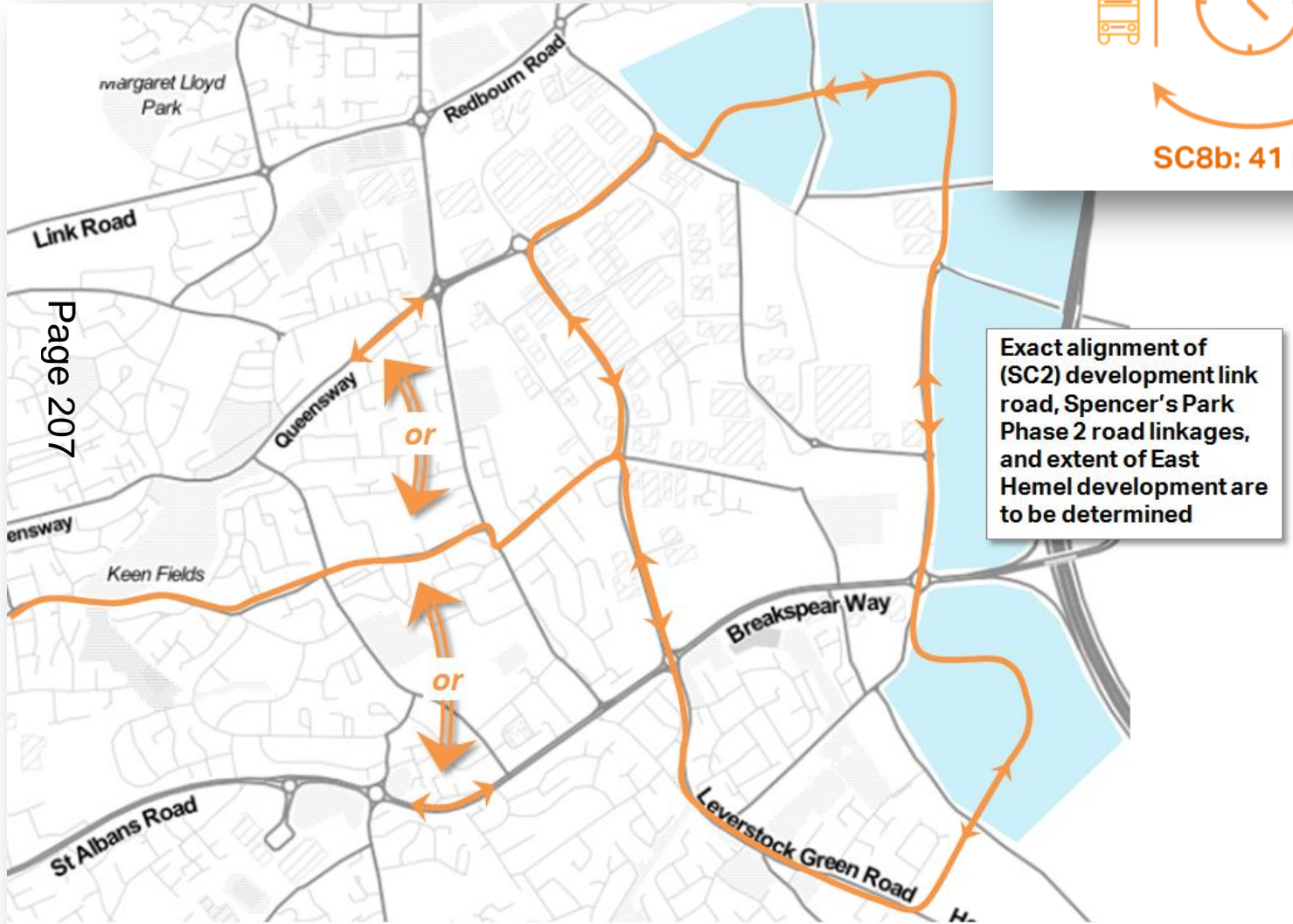
### SC8a5 clockwise + anticlockwise routes



Page 206

# Options

## SC8b New Circular Routes

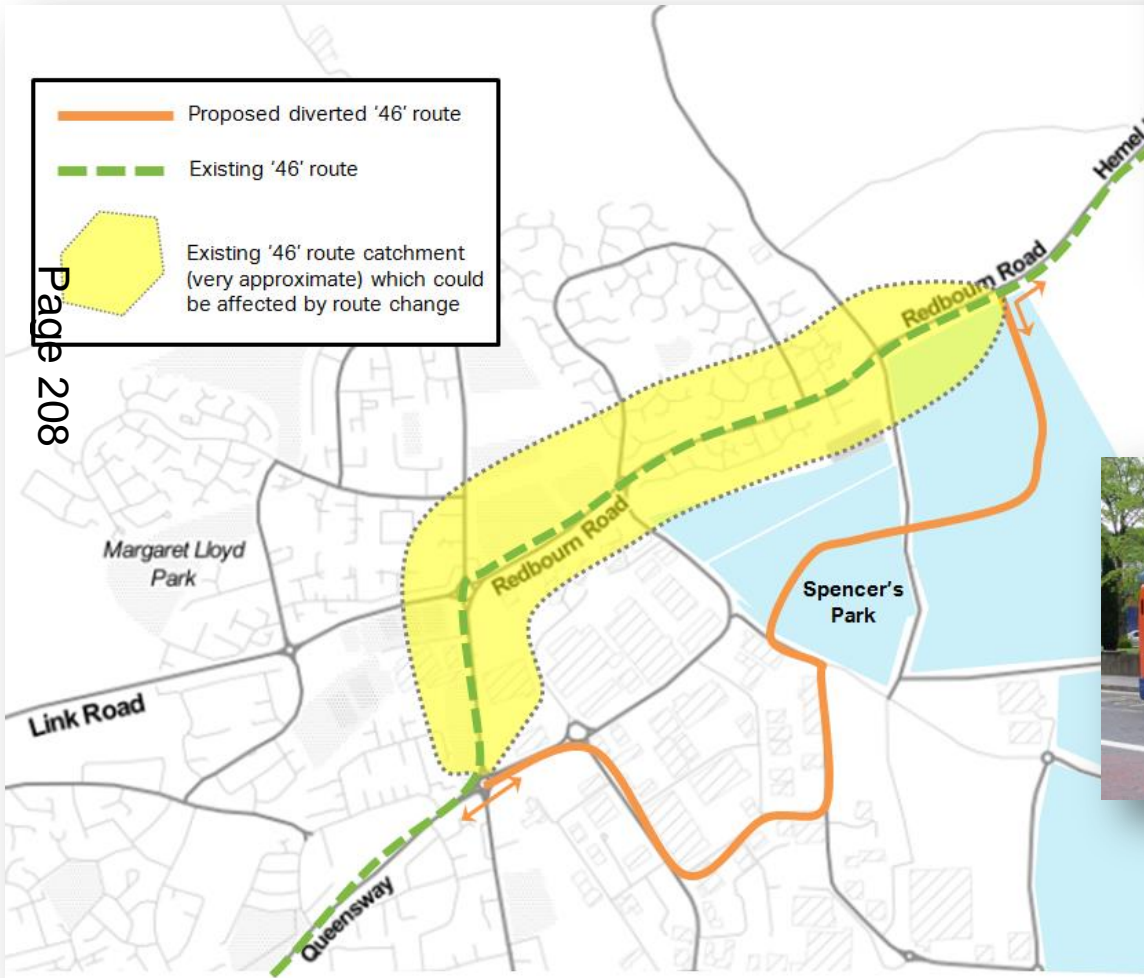


Exact alignment of (SC2) development link road, Spencer's Park Phase 2 road linkages, and extent of East Hemel development are to be determined

Page 207

# Options

## SC8c Re-Route Centrebus 46

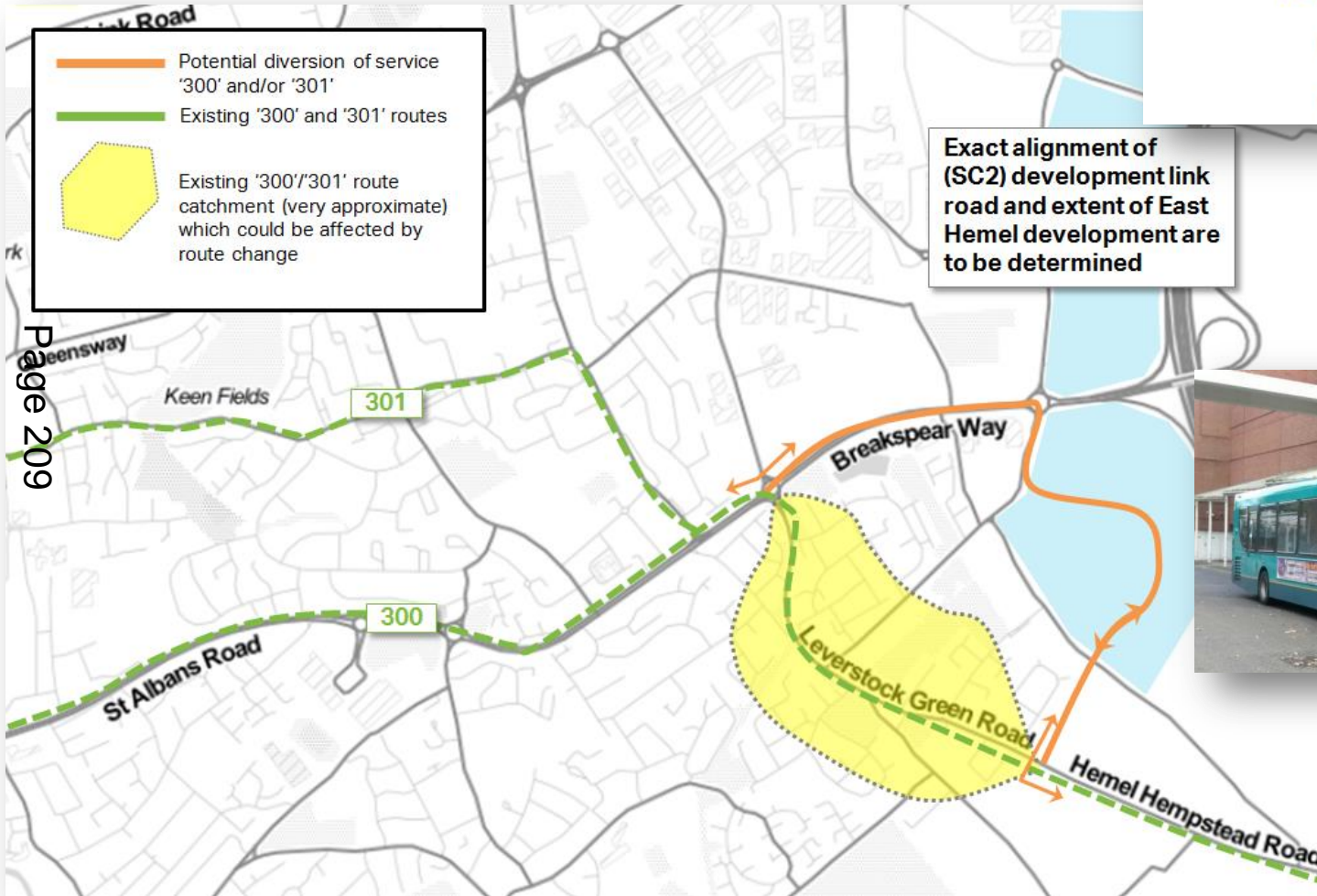


Page 208



# Options

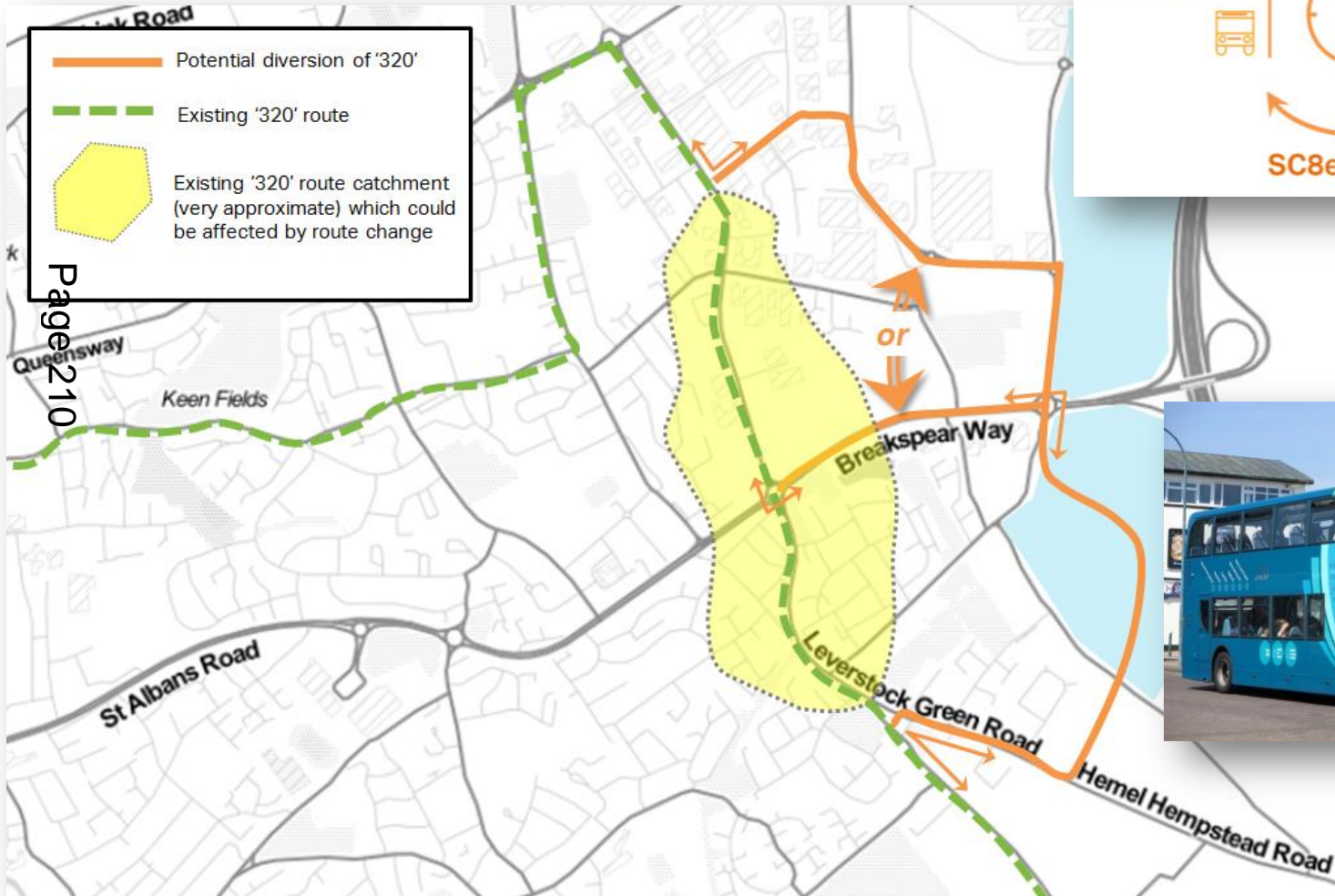
## SC8d Re-Route Arriva 300 / 301



Page 209

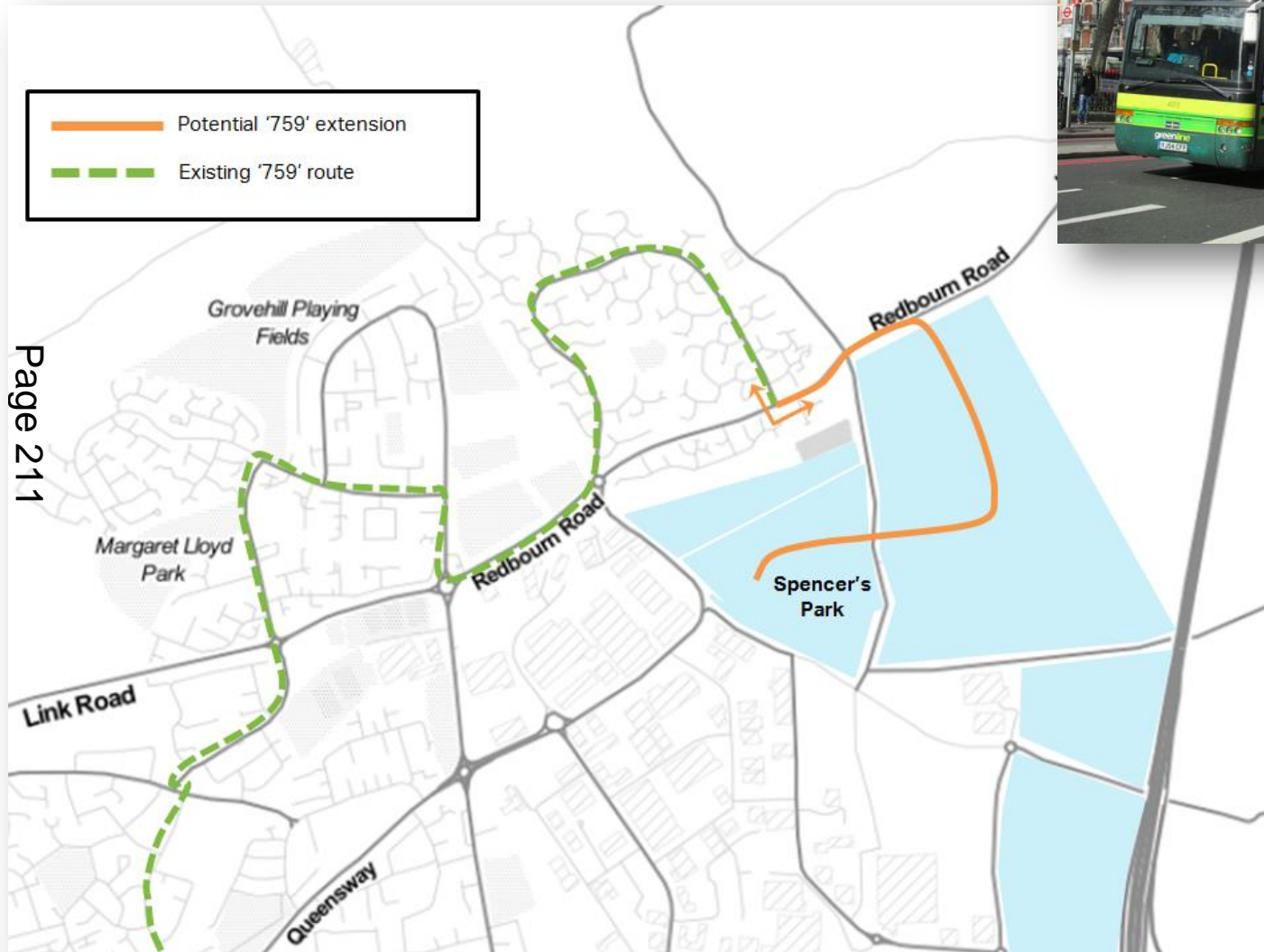
# Options

## SC8e Re-Route Arriva 320



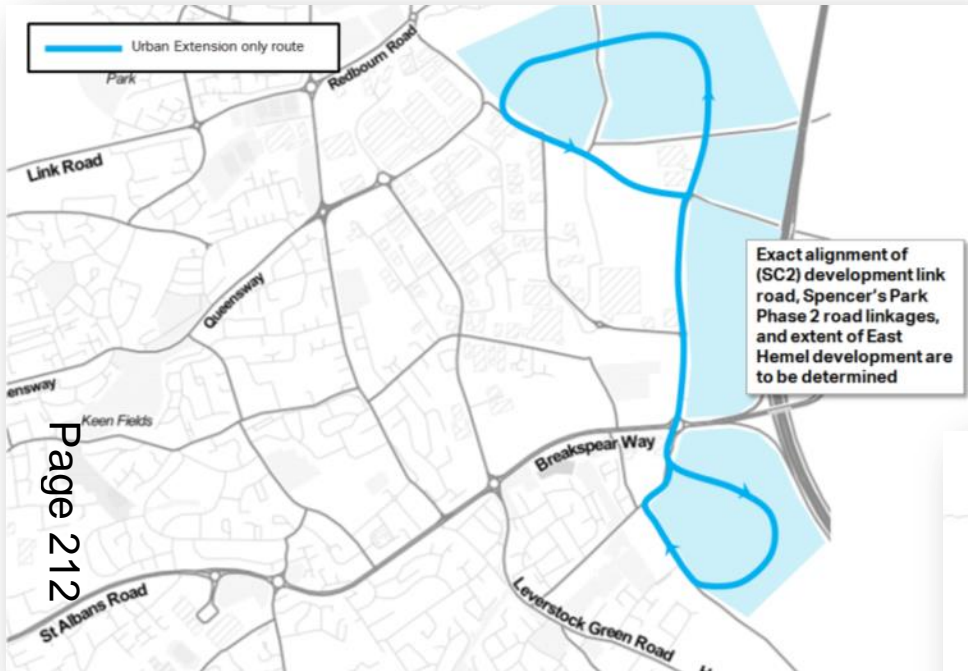
# Options

## SC8f Extension of Greenline 759

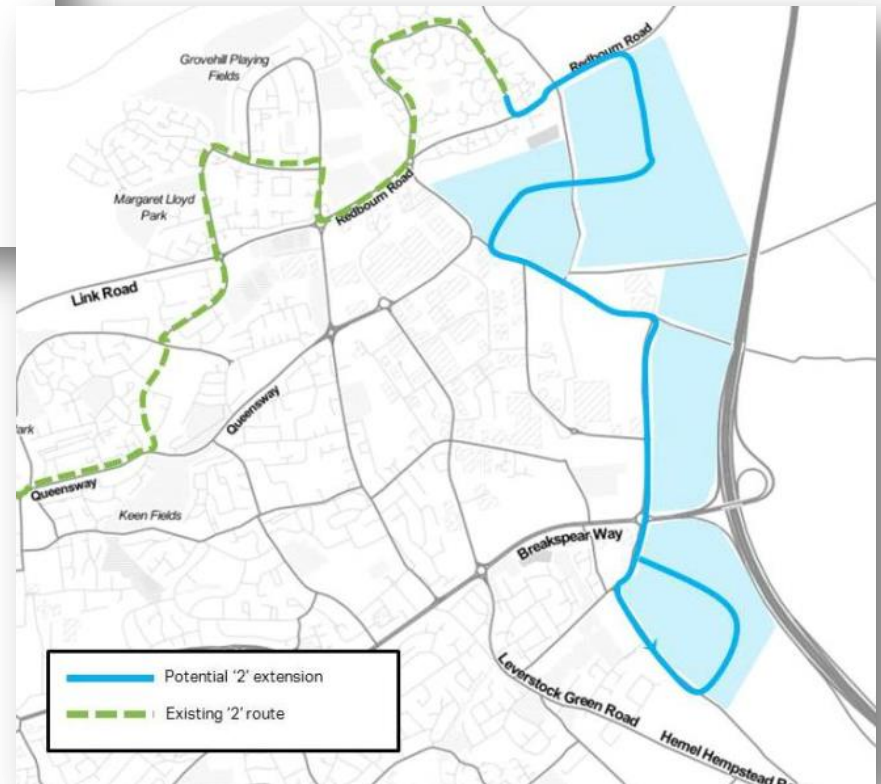


Page 211

# Discounted Options



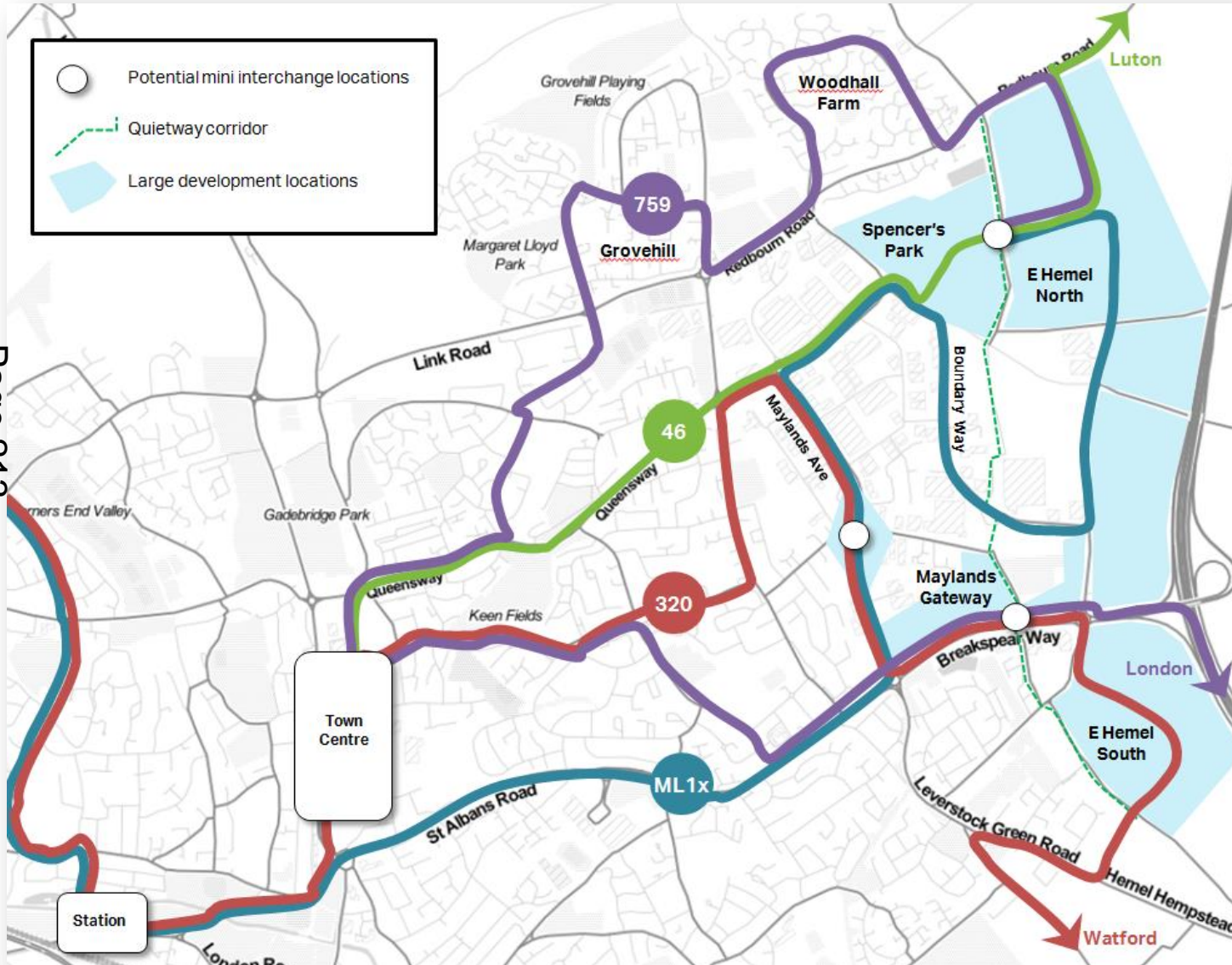
◀ New East-Hemel/Spencers Park bus link



Extension to Arriva 2 ➤

# Recommended Bus Option Package

SC8a4 + SC8c + SC8d or SC8e + SC8f



Page 213

# Further considerations

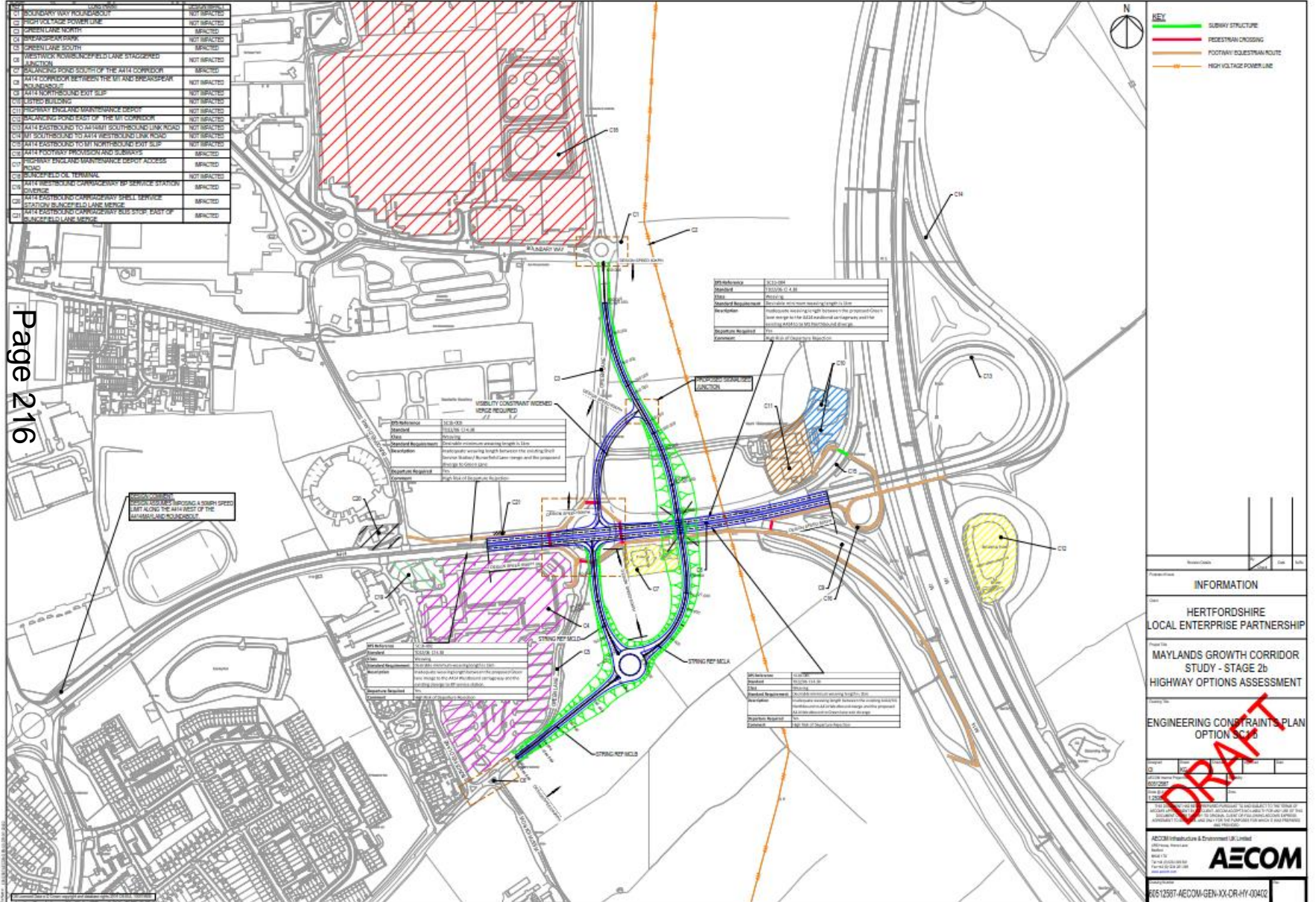
- Bus on-site facilities within East Hemel Hempstead and Spencer's Park Phase 2
- Opportunity for re-casting of bus services across Hemel Hempstead to account for wider growth and change in travel demands
- Opportunity for mini coach/bus interchange facility
- Emerging proposals for potential cross-county bus rapid transit or tram link broadly along A414 corridor.

Page 214

# 4/ SC1 Scheme Option Design

Page 215

# SC1b



**INFORMATION**

HERTFORDSHIRE LOCAL ENTERPRISE PARTNERSHIP

MAYLANDS GROWTH CORRIDOR STUDY - STAGE 2b

HIGHWAY OPTIONS ASSESSMENT

**ENGINEERING CONSTRAINTS PLAN OPTION SC1b**

**DRAFT**

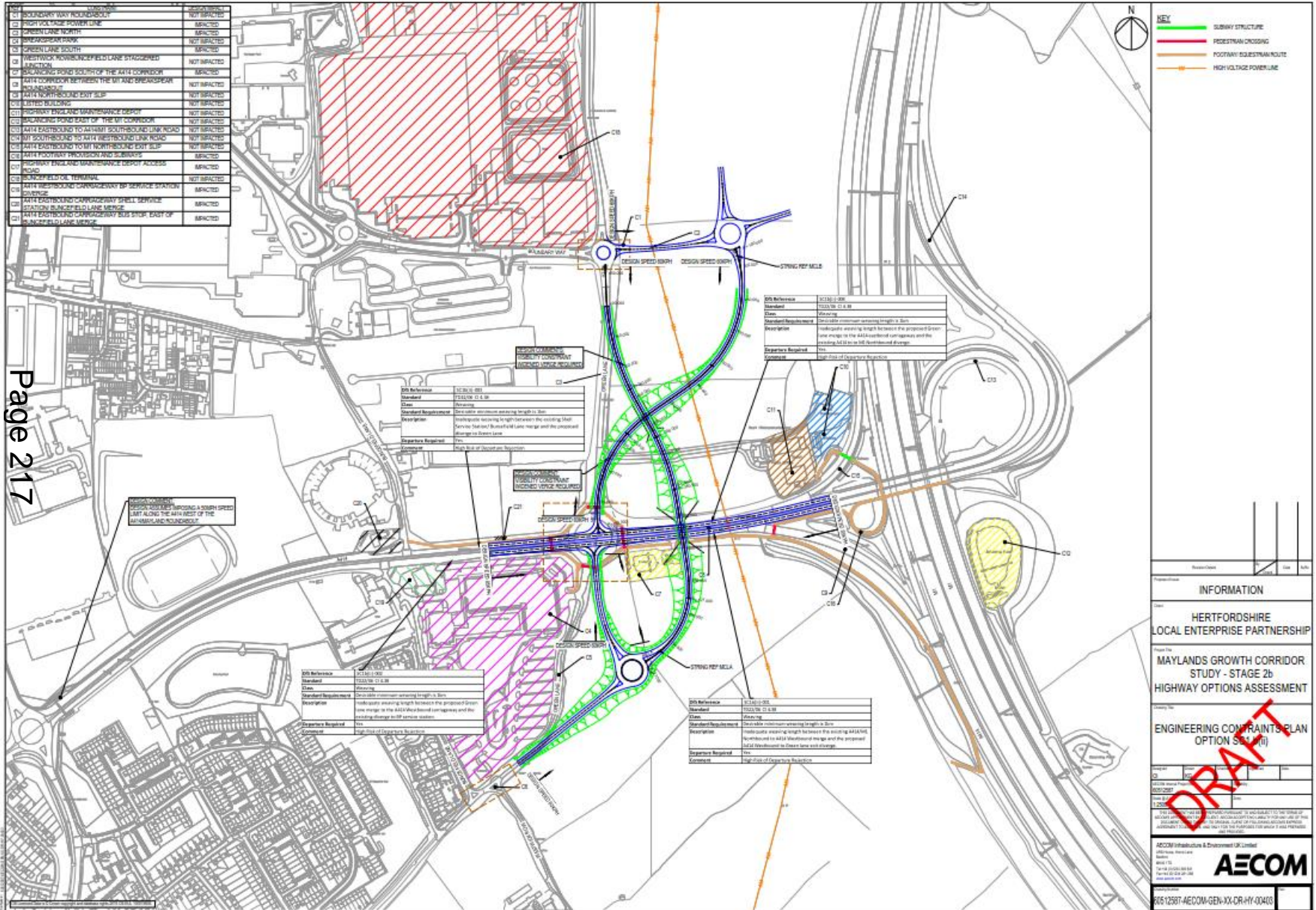
AECOM Infrastructure & Environment UK Limited

**AECOM**

20512597-AECOM-GEN-XX-CR-HY-00402



# SC1b(ii)



**INFORMATION**

HERTFORDSHIRE LOCAL ENTERPRISE PARTNERSHIP

MAYLANDS GROWTH CORRIDOR STUDY - STAGE 2b HIGHWAY OPTIONS ASSESSMENT

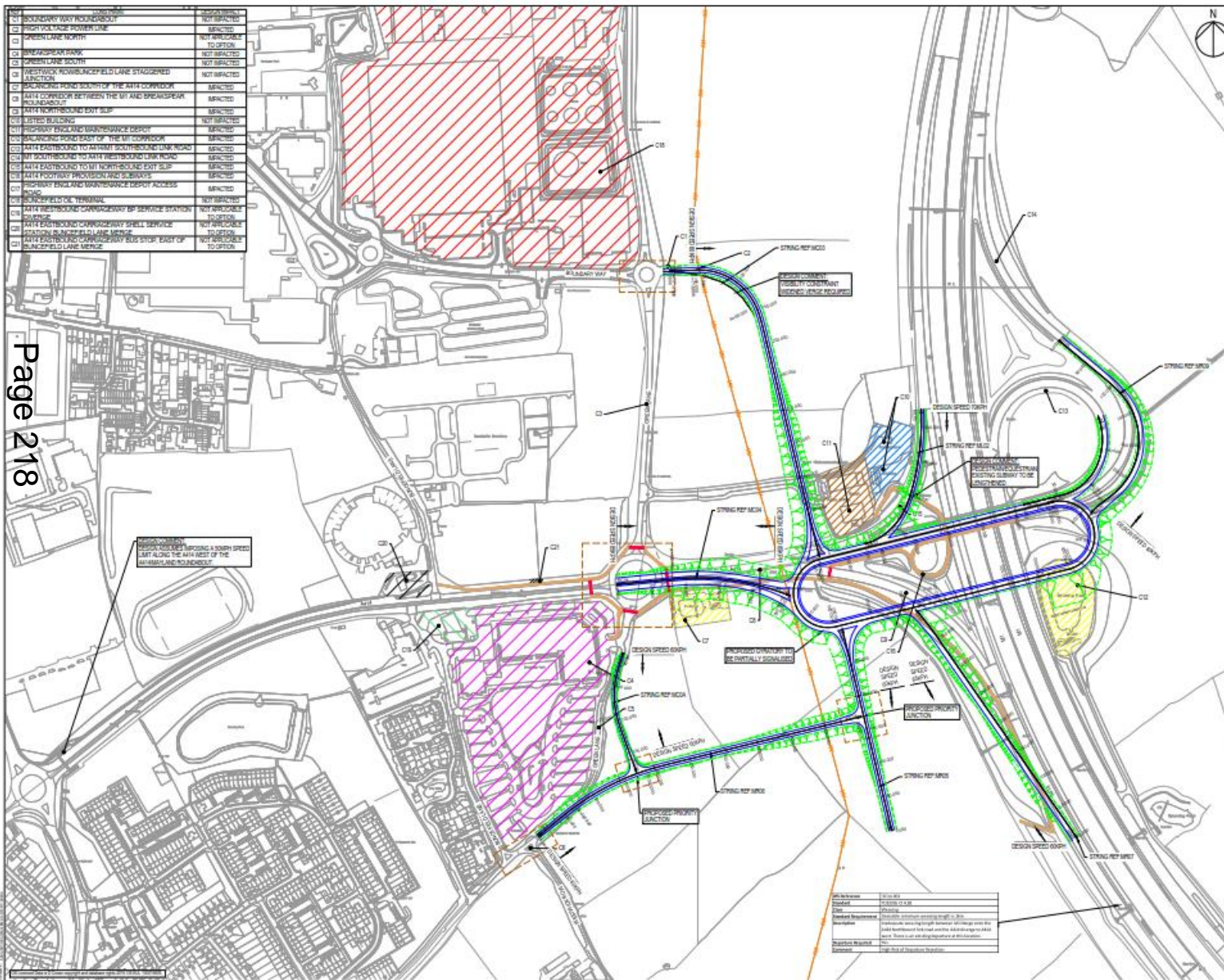
**ENGINEERING CONSTRAINTS PLAN OPTION SC1b(ii)**

**DRAFT**

AECOM Infrastructure & Environment UK Limited  
 0207 2919 3000  
 0207 2919 3001  
 0207 2919 3002  
 0207 2919 3003  
 0207 2919 3004  
 0207 2919 3005  
 0207 2919 3006  
 0207 2919 3007  
 0207 2919 3008  
 0207 2919 3009  
 0207 2919 3010

0207 2919 3000  
 0207 2919 3001  
 0207 2919 3002  
 0207 2919 3003  
 0207 2919 3004  
 0207 2919 3005  
 0207 2919 3006  
 0207 2919 3007  
 0207 2919 3008  
 0207 2919 3009  
 0207 2919 3010

# SC1d



04	SECONDARY WORK ROAD/WORK	NOT IMPACTED
05	GREEN VALLEY POWER LINE	IMPACTED
06	GREEN VALLEY NORTH TUNNEL	NOT IMPACTED
07	GREEN VALLEY PARK	NOT IMPACTED
08	GREEN VALLEY SOUTH	NOT IMPACTED
09	WESTWOOD PARK/INFIELD LANE STAGGERED JUNCTION	NOT IMPACTED
10	BACWING ROAD SOUTH OF THE A114 CORRIDOR	IMPACTED
11	A114 CORRIDOR BETWEEN THE M1 AND BRADSGATE ROUNDABOUT	IMPACTED
12	A114 NORTHBOUND EXIT SLP	IMPACTED
13	LESTER BUILDING	NOT IMPACTED
14	PROBARY ENGLAND BRANWELL SERVICE	IMPACTED
15	BACWING ROAD EAST OF THE M1 CORRIDOR	IMPACTED
16	A114 EASTBOUND TO NORTHWOOD LINK ROAD	IMPACTED
17	M1 SOUTHBOUND TO A114 WESTBOUND LINK ROAD	IMPACTED
18	A114 EASTBOUND TO M1 NORTHBOUND EXIT SLP	IMPACTED
19	A114 FOOTWAY PROVISION AND SUBWAYS	IMPACTED
20	PROBARY ENGLAND BRANWELL SERVICE ACCESS ROAD	IMPACTED
21	BRANWELL SERVICE TERMINAL	NOT IMPACTED
22	A114 WESTBOUND CONVICTIONWAY BY SERVICE STATION JUNCTION	NOT IMPACTED
23	A114 EASTBOUND CONVICTIONWAY BY SERVICE STATION JUNCTION	NOT IMPACTED
24	A114 EASTBOUND CONVICTIONWAY BY SERVICE STATION JUNCTION	NOT IMPACTED
25	A114 EASTBOUND CONVICTIONWAY BY SERVICE STATION JUNCTION	NOT IMPACTED
26	A114 EASTBOUND CONVICTIONWAY BY SERVICE STATION JUNCTION	NOT IMPACTED

**KEY**

- SUBWAY STRUCTURE
- PEDESTRIAN CROSSING
- FOOTWAY/EQUESTRIAN ROUTE
- HIGH VOLTAGE POWER LINE

INFORMATION

HERTFORDSHIRE LOCAL ENTERPRISE PARTNERSHIP

MAYLANDS GROWTH CORRIDOR STUDY - STAGE 2b HIGHWAY OPTIONS ASSESSMENT

ENGINEERING CONSTRAINTS PLAN OPTION SC1d

DRAFT

Author	SC1d.dwg
Checker	SC1d.dwg
Drawn	SC1d.dwg
Project Reference	Maylands Growth Corridor Stage 2b
Revision	None
Revision Reason	None
Notes	None

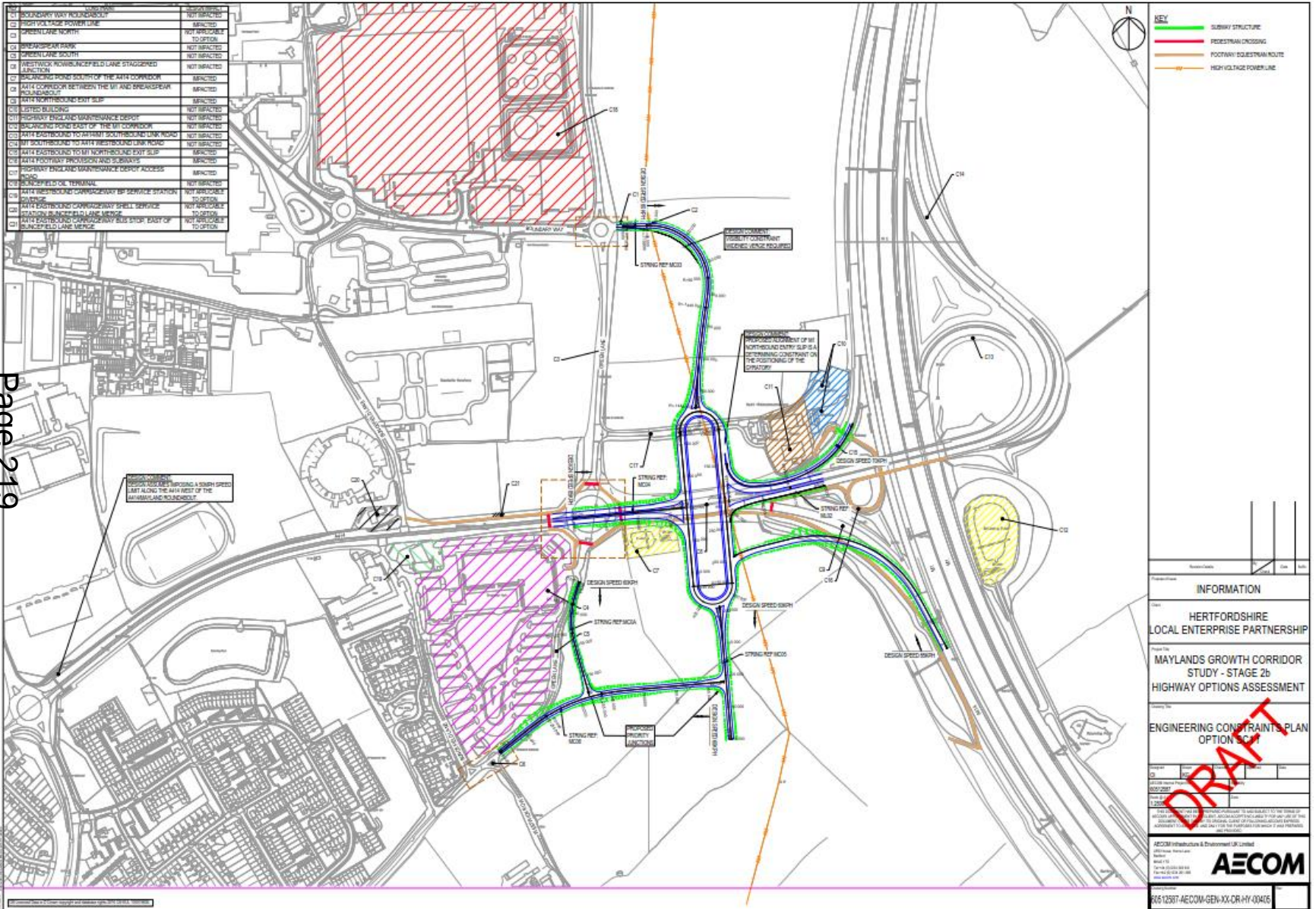
AECOM Infrastructure & Environment UK Limited

**AECOM**

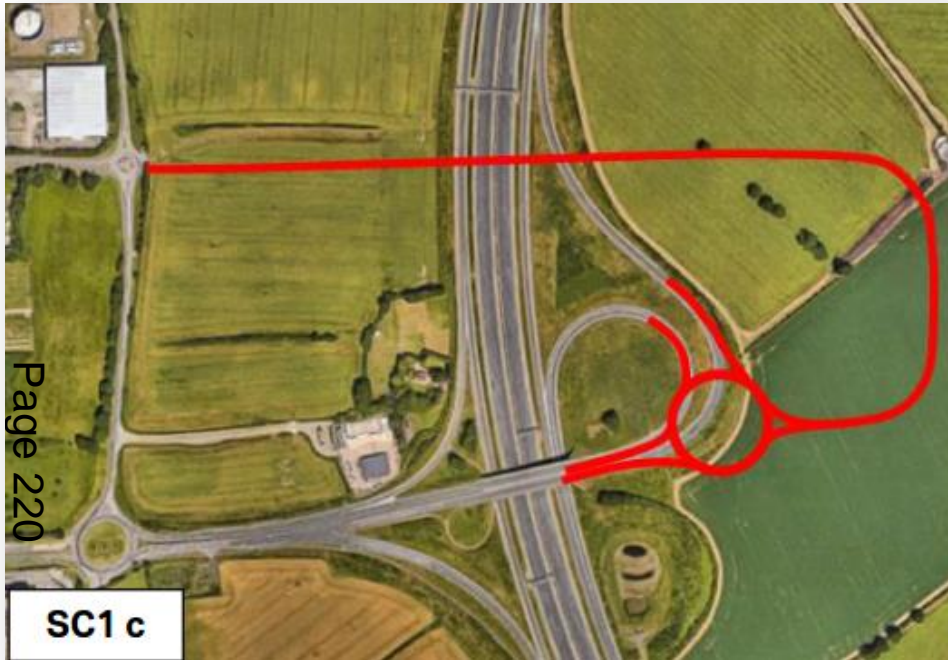
015 12501 - AECOM-GEN-XX-0R-HY-0004

# SC1f

Page 219



# SC1c – to be designed (awaiting commission)



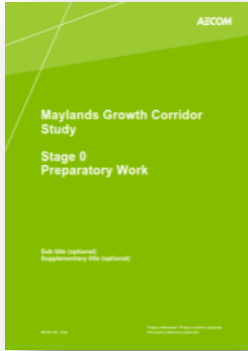
# 5/ Paramics Model Enhancement Update

Page 221

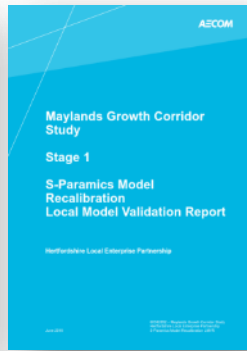
# 6/ Next Steps

Page 222

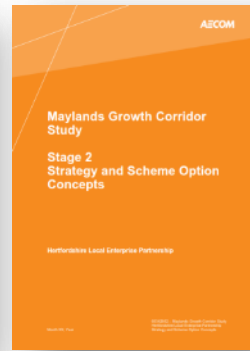
# Documents



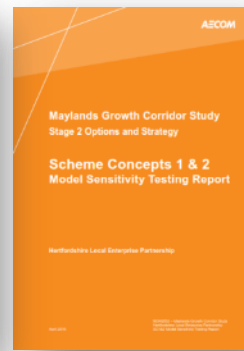
**Stage 0**  
Preparatory  
Work



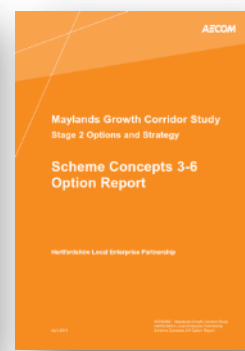
**Stage 1**  
Model Update  
LMVR



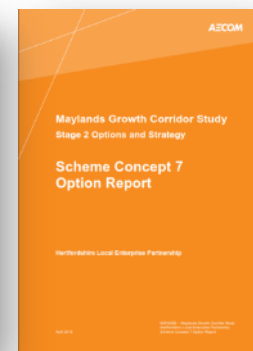
**Stage 2**  
Strategy and  
Scheme  
Concept  
Options Report



**Stage 2**  
SC1&2 Model  
Sensitivity  
Testing Report

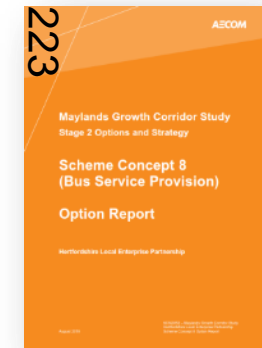


**Stage 2**  
SC3-6 Options  
Report

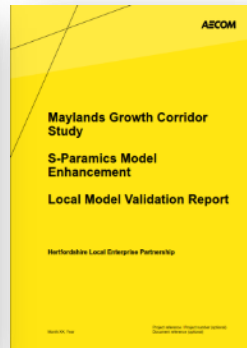


**Stage 2**  
SC7 Lorry  
Parking &  
Routing Options  
Report

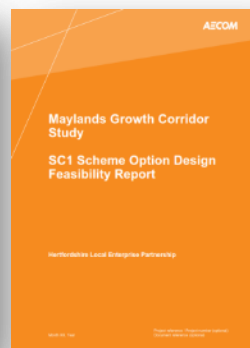
Forthcoming



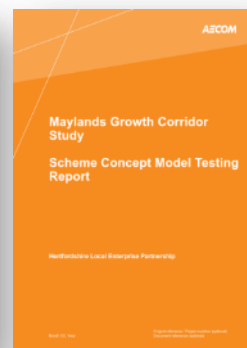
**Stage 2**  
SC8 Bus  
Services &  
Routing  
Options Report



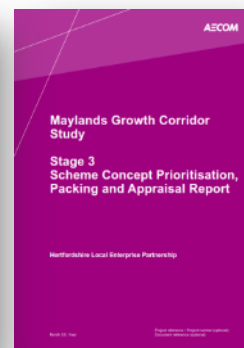
Model  
Enhancement  
LMVR  
(Sept 16)



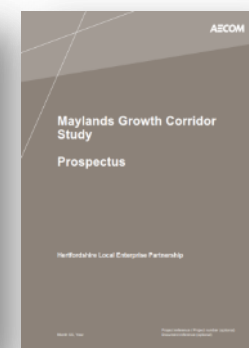
**Stage 2**  
SC1 Scheme  
Options Design  
Feasibility  
Report  
(Sept 16)



**Stage 2**  
Scheme  
Concept  
Model Testing  
Report  
(Oct 16)



**Stage 3**  
Scheme  
Concept  
Prioritisation  
& Packaging  
Report (Nov 16)



**Maylands  
Growth Corridor  
Study  
Prospectus**  
(Nov 16)

# 7/ AOB

Page 224

**Next meeting:  
w/e 4<sup>th</sup> November**



