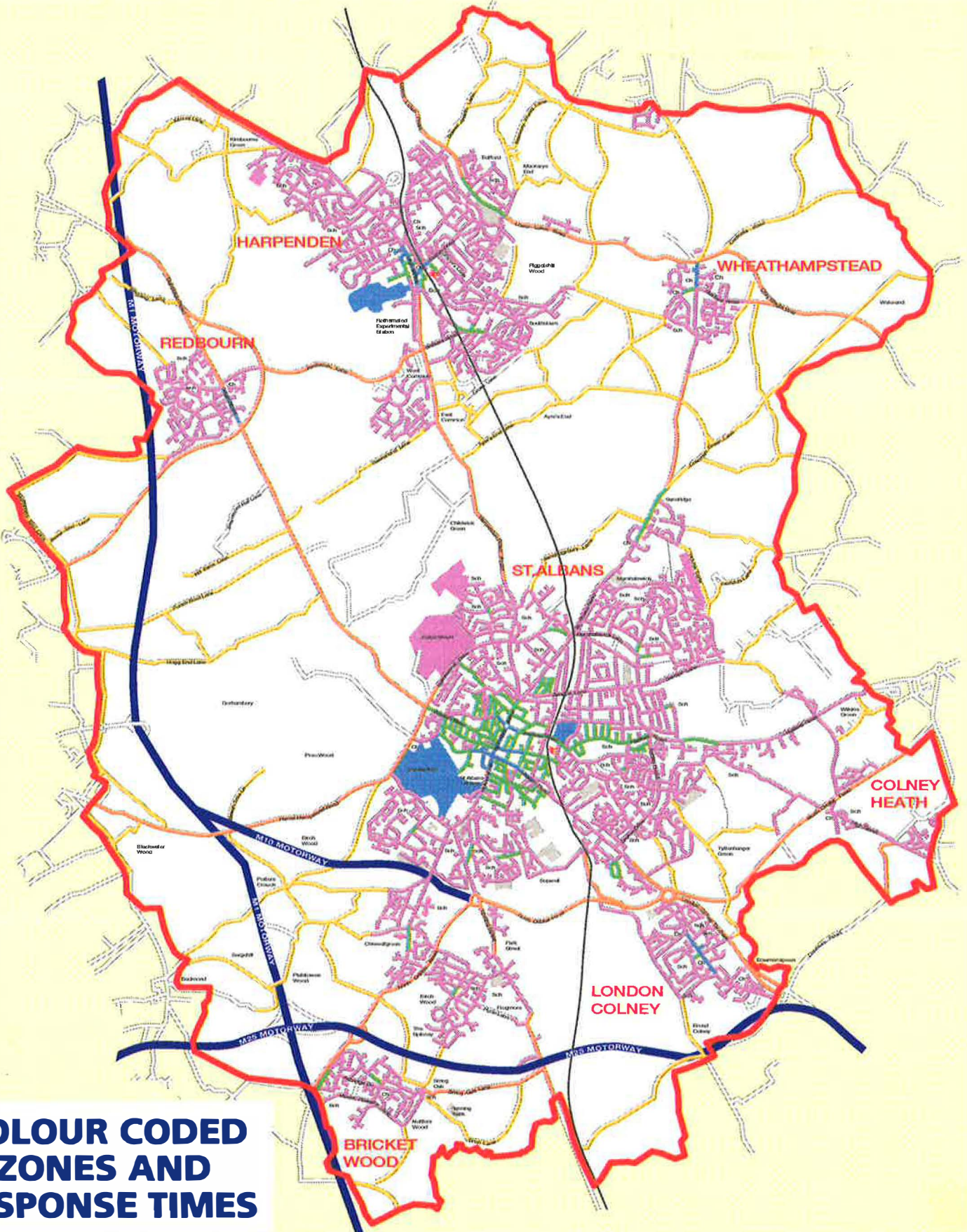


ZONING

Each zone is colour coded according to how often each area is used.

Each zone has its own response time in which litter will be removed by the Council's contractors.



COLOUR CODED ZONES AND RESPONSE TIMES

ZONE ONE

Shopping & Town Centres, Central Car Parks, Clarence, Verulamium, & Rothamsted Parks

Litter will be removed within a maximum of 6 hours

ZONE TWO

High density residential streets, recreational areas & suburban car parks

Litter will be removed within a maximum of 12 hours

ZONE THREE

Low density residential streets, other car parks, small parks & open spaces

Litter will be removed within a maximum of 12 hours

ZONE SIX

Strategic Routes

Litter will be removed within a maximum of 28 days

ZONE SEVEN

District and local roads/lanes

Litter will be removed within a maximum of 14 days